

INDICATOR TREND DATA

Cedar/Jones Early Childhood Iowa has chosen to track a wide variety of data within the community to identify trends and possible undetected needs. However, only certain data points or indicators were selected to provide information on the progress of goals identified in this Early Childhood Community Plan (See identified goals). Data is updated and reviewed annually.

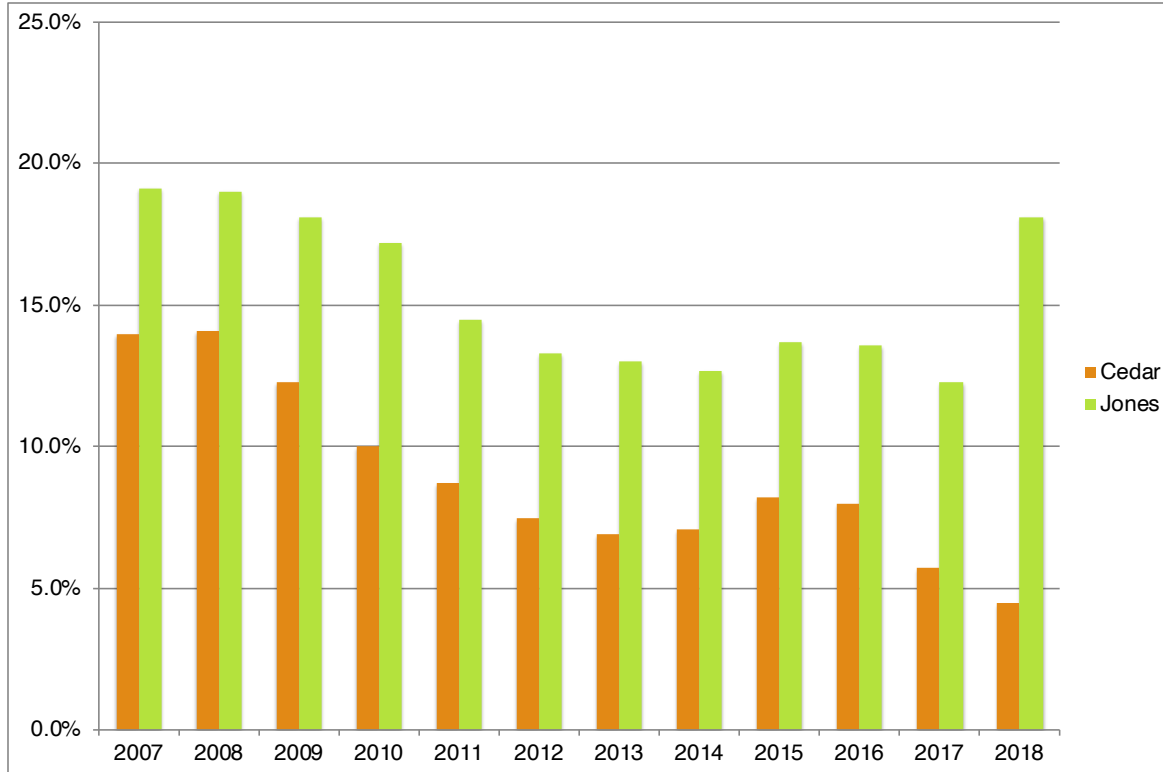
Child Receiving WIC

WIC offers supplemental foods, referrals and nutrition education for low-income pregnant and postpartum women and children through age 4.

% of children receiving WIC Services

Iowa Kids Count -- <https://datacenter.kidscount.org/>

	Cedar	Jones	State
2007	14.0%	19.1%	27.1%
2008	14.1%	19.0%	27.7%
2009	12.3%	18.1%	28.8%
2010	10.0%	17.2%	28.2%
2011	8.7%	14.5%	26.9%
2012	7.5%	13.3%	26.6%
2013	6.9%	13.0%	25.5%
2014	7.1%	12.7%	24.9%
2015	8.2%	13.7%	24.3%
2016	8.0%	13.6%	26.5%
2017	5.7%	12.3%	26.9%
2018	4.5%	18.1%	25.9%



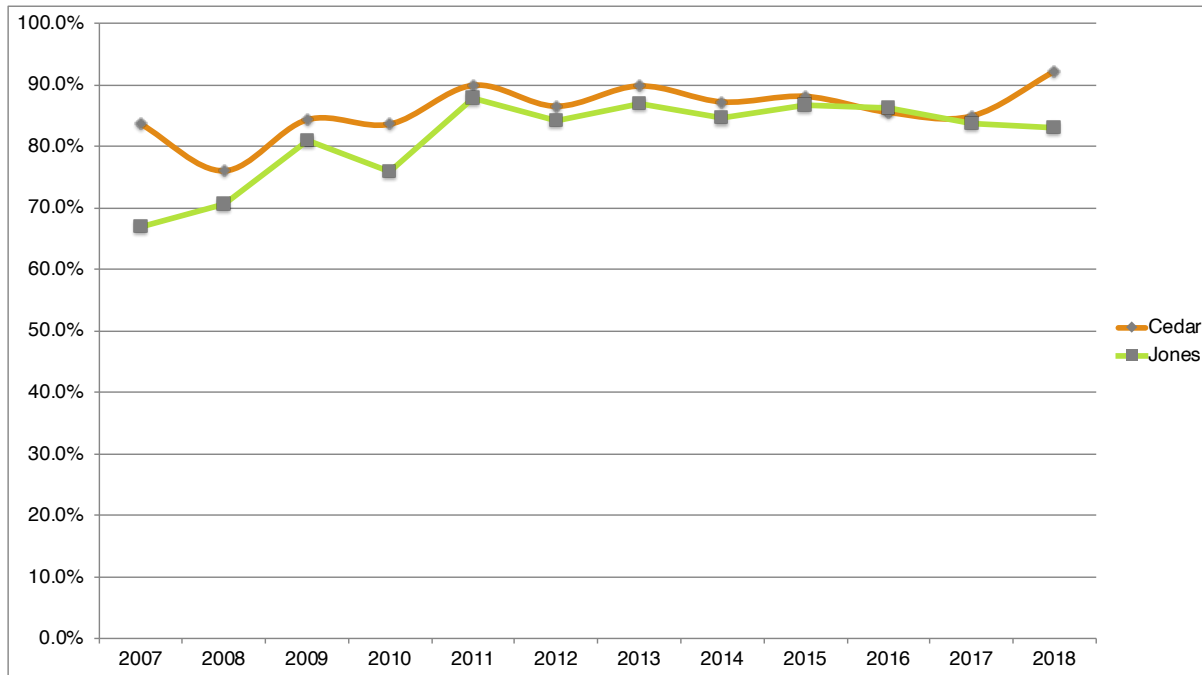
Prenatal Care

Early and regular prenatal care — when a health care provider can prevent or identify and treat health problems — increases the chances of a healthy pregnancy and birth.

% of Live Births where the mother received prenatal care during the 1st trimester.

Iowa Kids Count -- <https://datacenter.kidscount.org/>

	Cedar	Jones	State
2007	83.6%	66.9%	71.2%
2008	76.0%	70.6%	71.1%
2009	84.3%	81.0%	73.7%
2010	83.6%	75.8%	75.5%
2011	89.9%	87.8%	84.8%
2012	86.5%	84.1%	84.0%
2013	89.8%	86.9%	84.1%
2014	87.2%	84.7%	83.9%
2015	88.1%	86.6%	79.4%
2016	85.5%	86.2%	78.7%
2017	84.9%	83.8%	79.1%
2018	92.20%	83.1%	79.0%

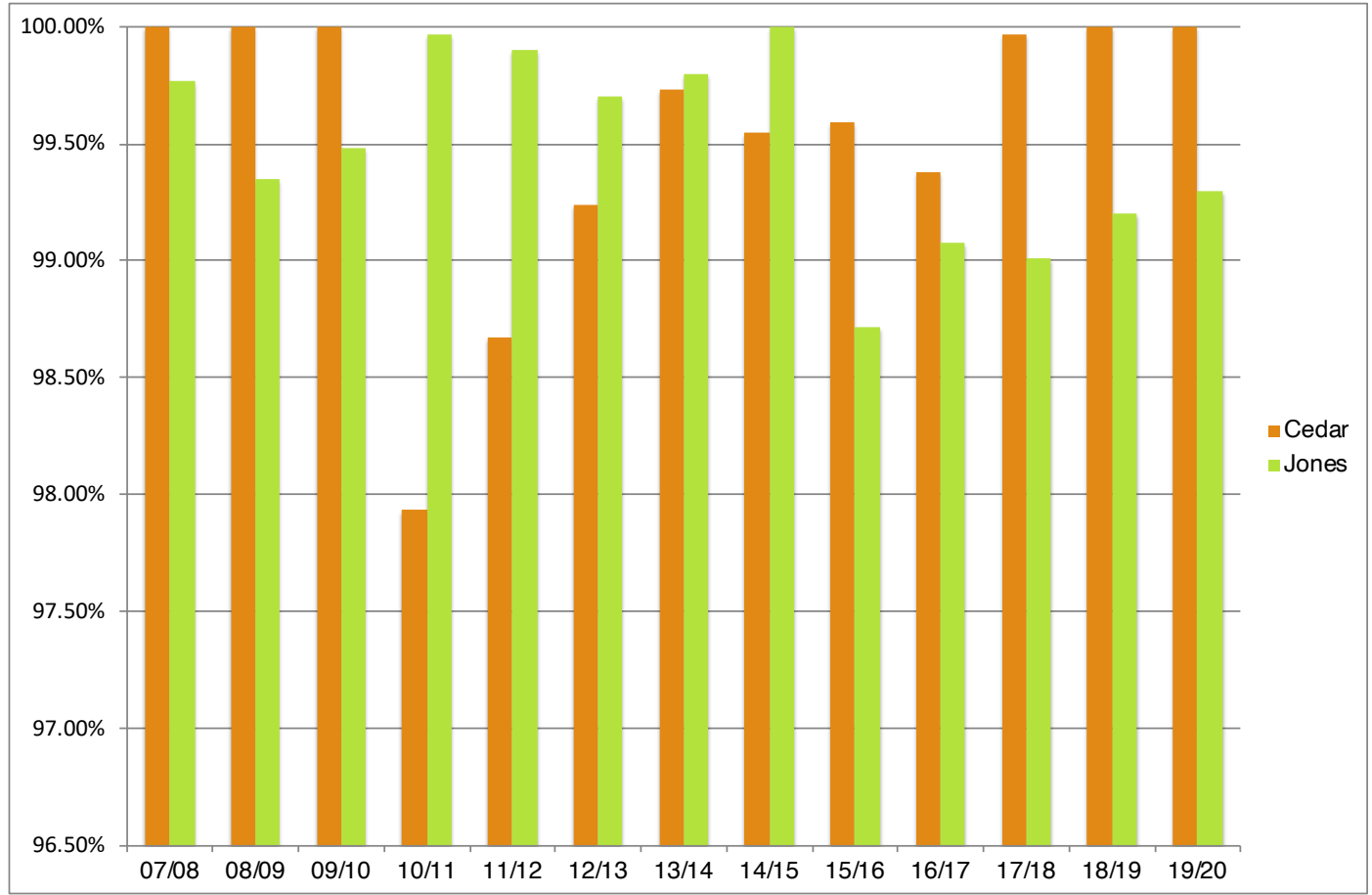


Immunizations

% of Kindergarten through 12 Students with a Valid Immunization Certificate

Dept. of Public Health -- <https://dph.iowa.gov/immtb/immunization/audits>

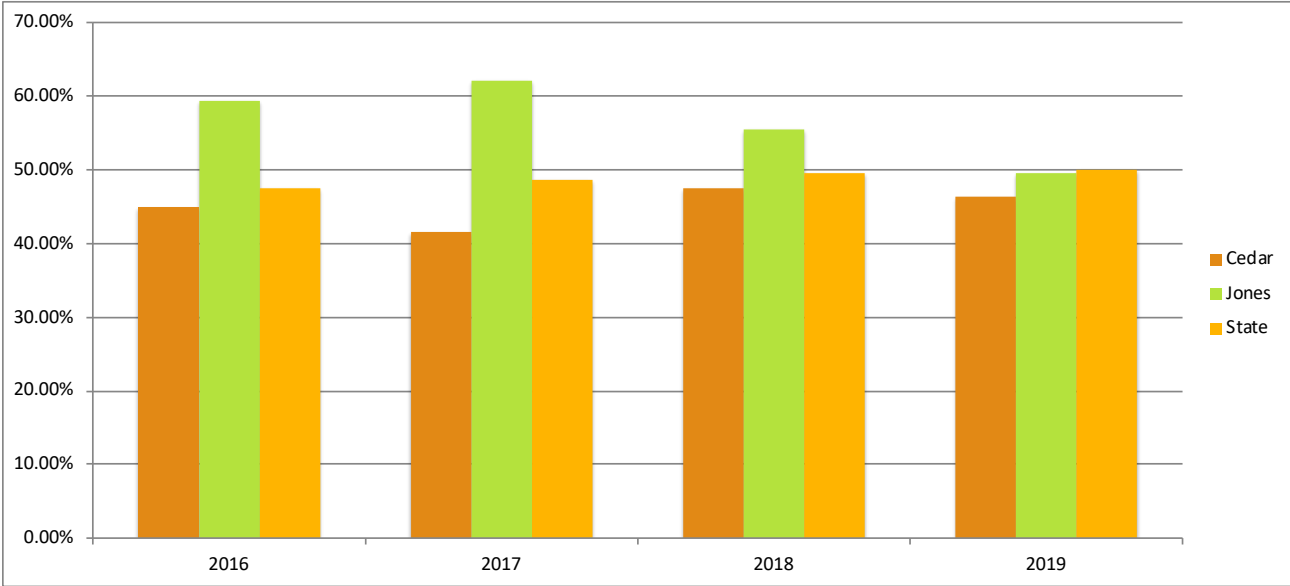
	Cedar	Jones	State
07/08	100.00%	99.77%	99.18%
08/09	100.00%	99.35%	99.24%
09/10	100.00%	99.48%	99.11%
10/11	97.94%	99.97%	99.08%
11/12	98.67%	99.90%	99.10%
12/13	99.24%	99.70%	99.19%
13/14	99.73%	99.80%	99.02%
14/15	99.55%	100.00%	98.83%
15/16	99.59%	98.72%	98.76%
16/17	99.38%	99.08%	98.81%
17/18	99.97%	99.01%	98.08%
18/19	100%	99.20%	98.9%%
19/20	100%	99.30%	99.0%%



% of Medicaid-Enrollment Children ages 0-5 who received dental services

Dept. of Public Health -- <https://idph.iowa.gov/ohds/oral-health-center/reports>

	Cedar	Jones	State
2016	44.87%	59.44%	47.45%
2017	41.58%	62.12%	48.67%
2018	47.41%	55.58%	49.56%
2019	46.42%	49.55%	49.89%

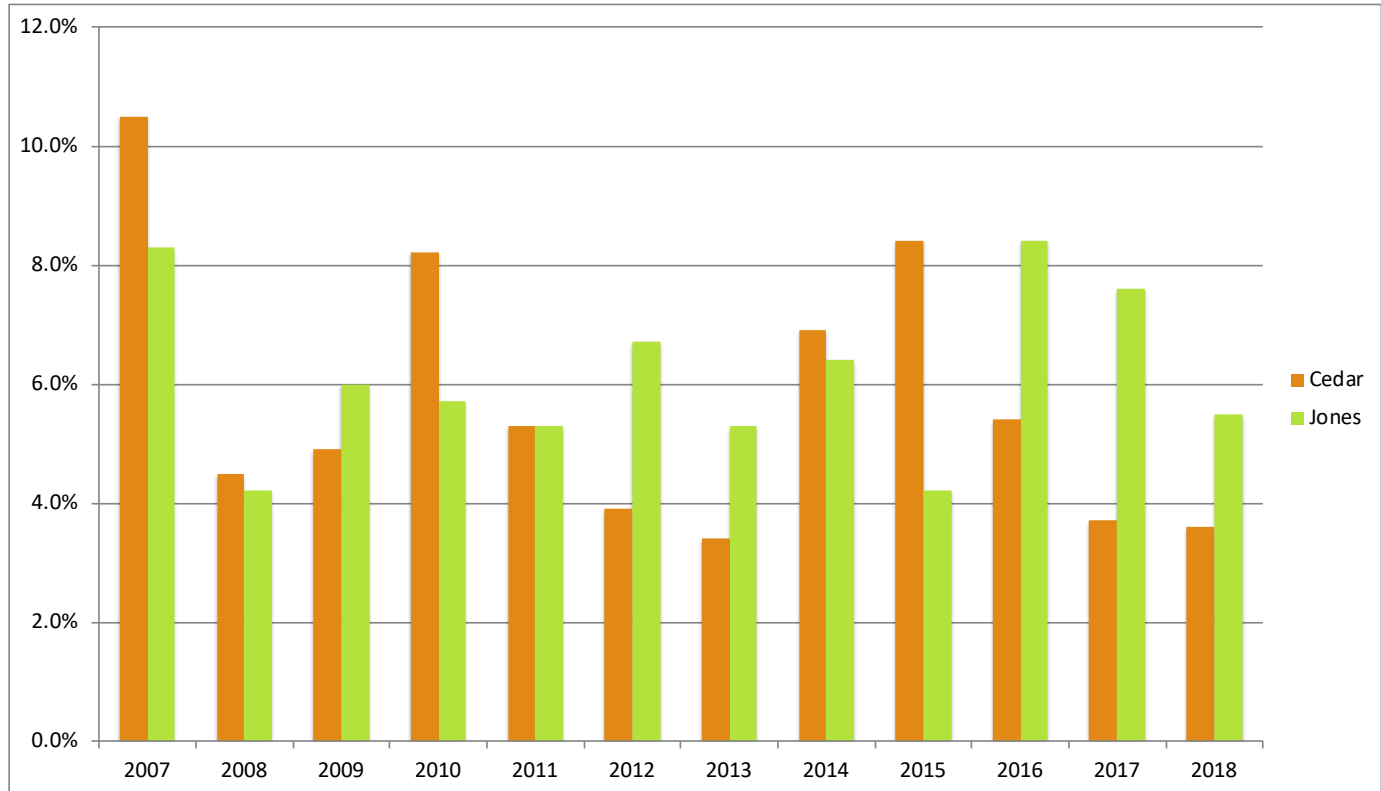


Low Birth Weight

% of live births weighing at less than 5.5 pounds at the time of birth

Iowa Dept. of Public Health -- <https://idph.iowa.gov/health-statistics/data>

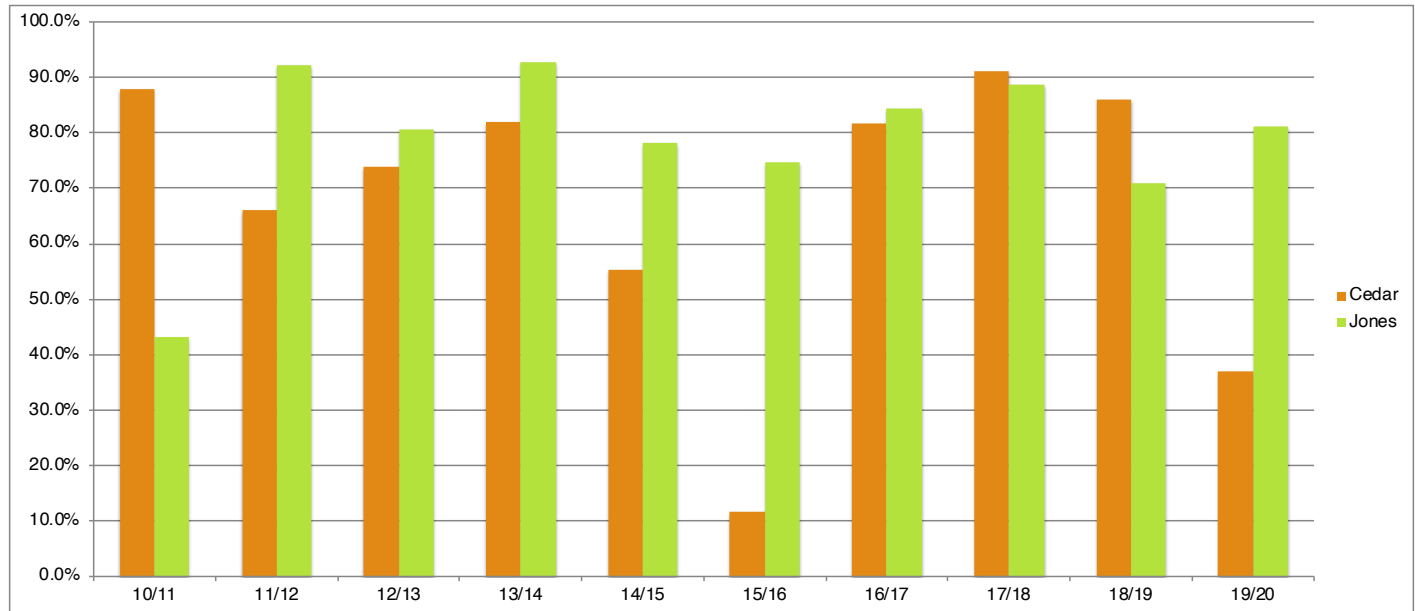
	Cedar	Jones	State
2007	10.5%	8.3%	6.8%
2008	4.5%	4.2%	6.7%
2009	4.9%	6.0%	6.7%
2010	8.2%	5.7%	7.0%
2011	5.3%	5.3%	6.5%
2012	3.9%	6.7%	6.7%
2013	3.4%	5.3%	6.6%
2014	6.9%	6.4%	6.8%
2015	8.4%	4.2%	6.8%
2016	5.4%	8.4%	6.7%
2017	3.7%	7.6%	6.0%
2018	3.6%	5.5%	6.7%



Children Entering Kindergarten with Preschool Experience

Dept. of Education -- Data Request

	Cedar	Jones
10/11	87.9%	43.3%
11/12	66.0%	92.2%
12/13	73.8%	80.7%
13/14	82.0%	92.6%
14/15	55.2%	78.2%
15/16	11.6%	74.8%
16/17	81.7%	84.3%
17/18	91.2%	88.8%
18/19	86.0%	70.9%
19/20	37.0%	81.1%

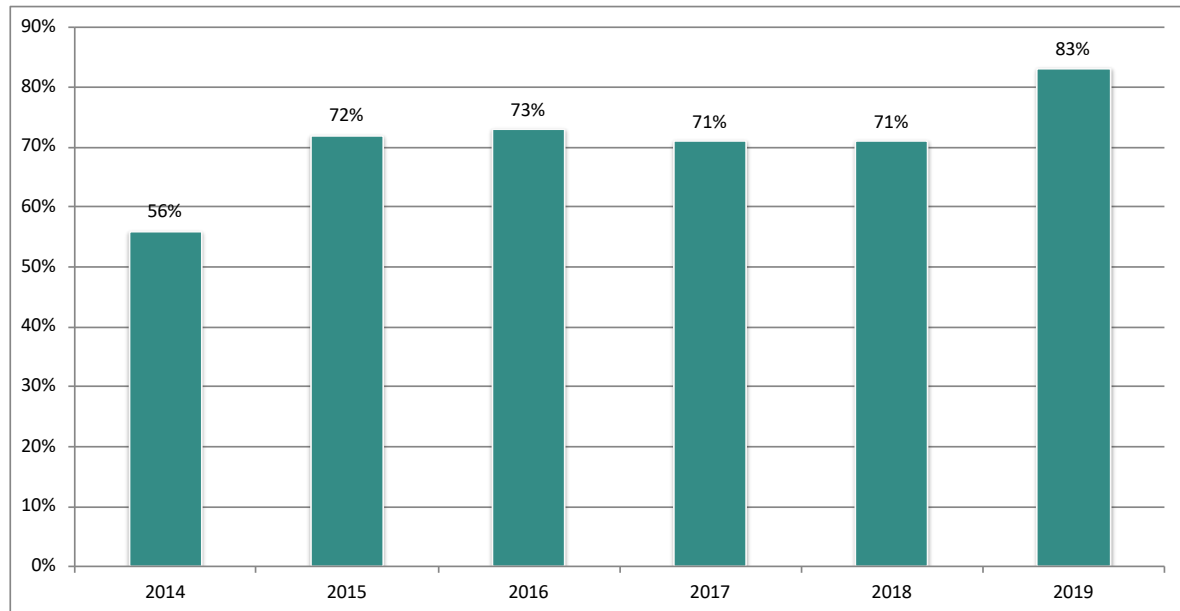


Kindergarten Proficiency In Early Literacy Skills

% of kindergarteners Proficient in Early Literacy Skills in Cedar and Jones Counties

Early Childhood Iowa -- <https://earlychildhood.iowa.gov/document/kindergarten-assessment-tables>

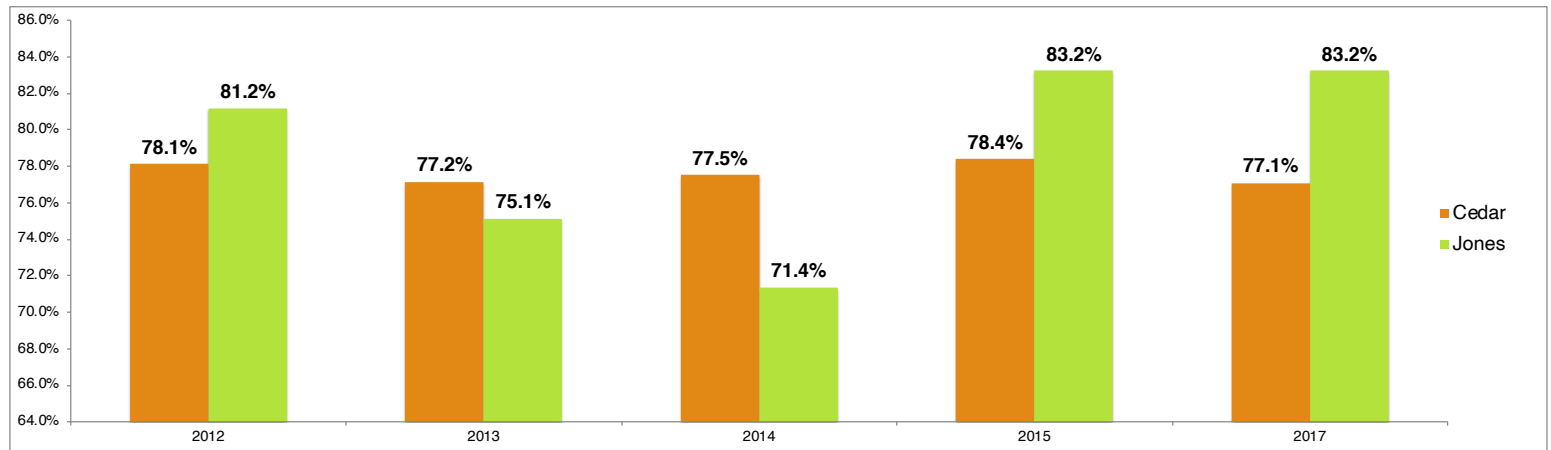
<i>Year</i>	<i>Percent Proficient</i>	<i># Proficient</i>	<i>Tested</i>
2014	56%	261	470
2015	72%	302	422
2016	73%	316	430
2017	71%	280	394
2018	71%	281	396
2019	83%	360	436



% of 3rd Graders Reading Proficiency Levels

Dept. of Education -- <https://data.iowa.gov/Education/Math-And-Reading-Proficiency-in-Iowa-by-School-Yea/f3h8-mnxi/data>

	CEDAR	JONES
2012	78.1%	81.2%
2013	77.2%	75.1%
2014	77.5%	71.4%
2015	78.4%	83.2%
2017	77.1%	83.2%

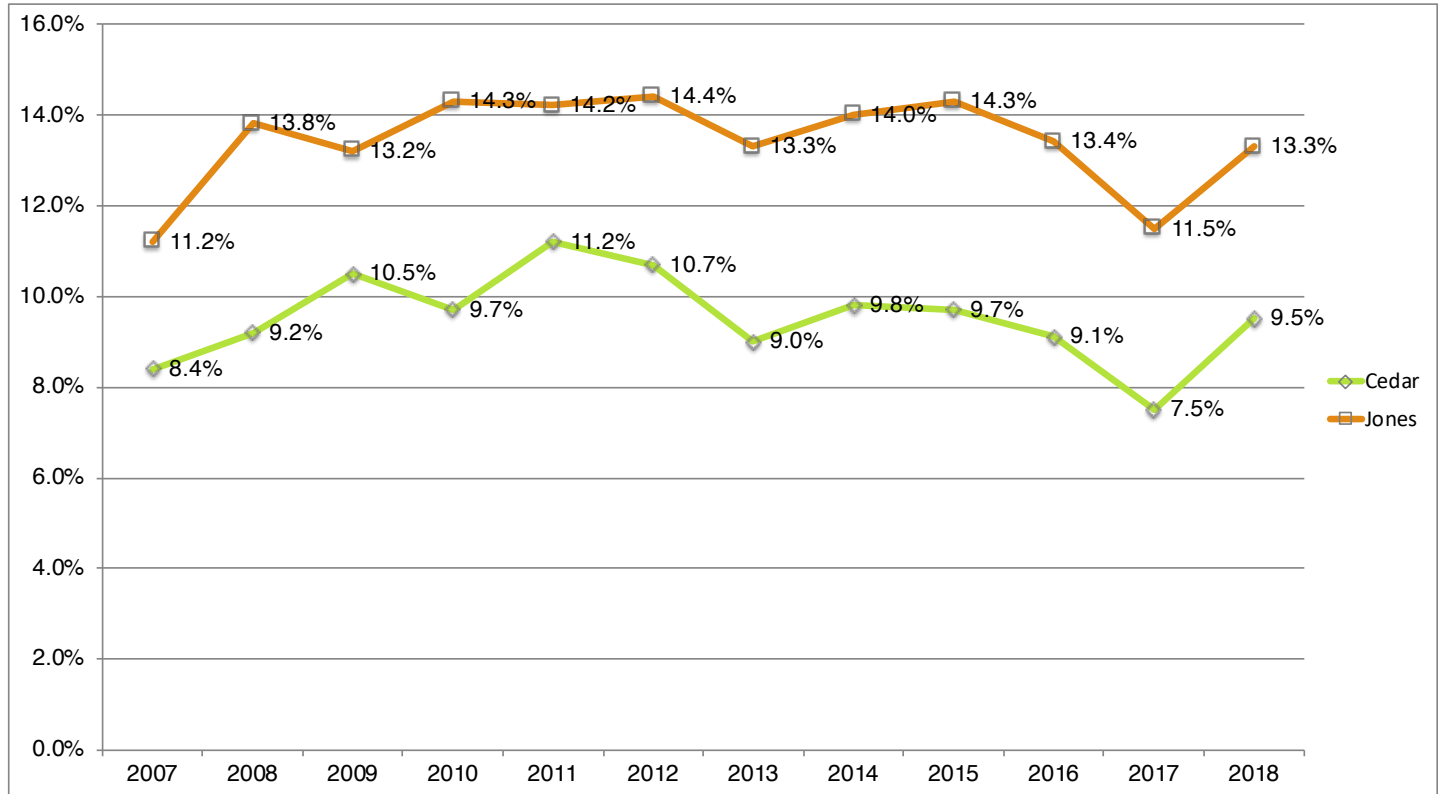


Child Poverty

% of children 0-17 who live below the poverty level

Iowa Kids Count -- <https://datacenter.kidscount.org/>

	Cedar	Jones	State
2007	8.4%	11.2%	13.7%
2008	9.2%	13.8%	14.2%
2009	10.5%	13.2%	15.6%
2010	9.7%	14.3%	16.2%
2011	11.2%	14.2%	17.1%
2012	10.7%	14.4%	16.1%
2013	9.0%	13.3%	16.0%
2014	9.8%	14.0%	15.5%
2015	9.7%	14.3%	14.9%
2016	9.1%	13.4%	14.6%
2017	7.5%	11.5%	12.6%
2018	9.5%	13.3%	13.5%

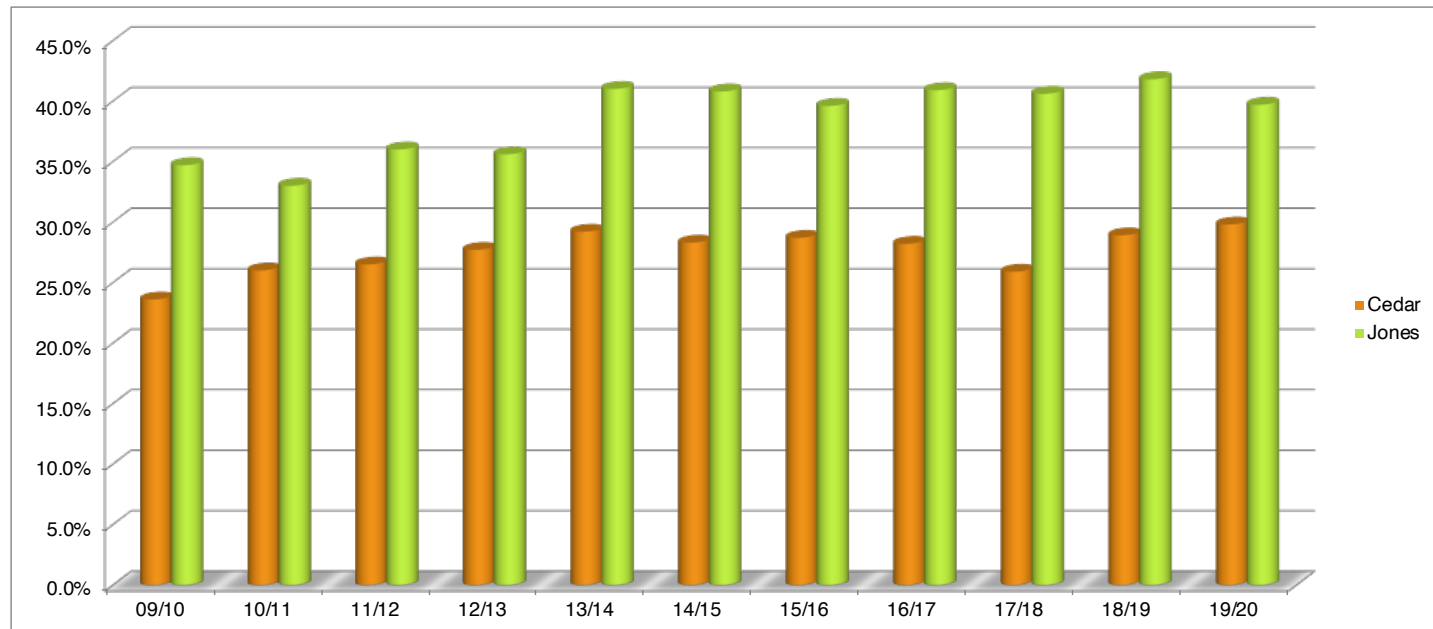


Free & Reduced Lunch Rates

% of children qualifying and utilizing Free & Reduced Lunch

Dept. of Education -- https://educateiowa.gov/education-statistics#Student_Performance

	Cedar	Jones
09/10	23.6%	34.7%
10/11	26.0%	33.0%
11/12	26.5%	36.0%
12/13	27.7%	35.6%
13/14	29.2%	41.0%
14/15	28.3%	40.8%
15/16	28.7%	39.6%
16/17	28.2%	40.9%
17/18	25.9%	40.6%
18/19	28.9%	41.8%
19/20	29.8%	39.7%

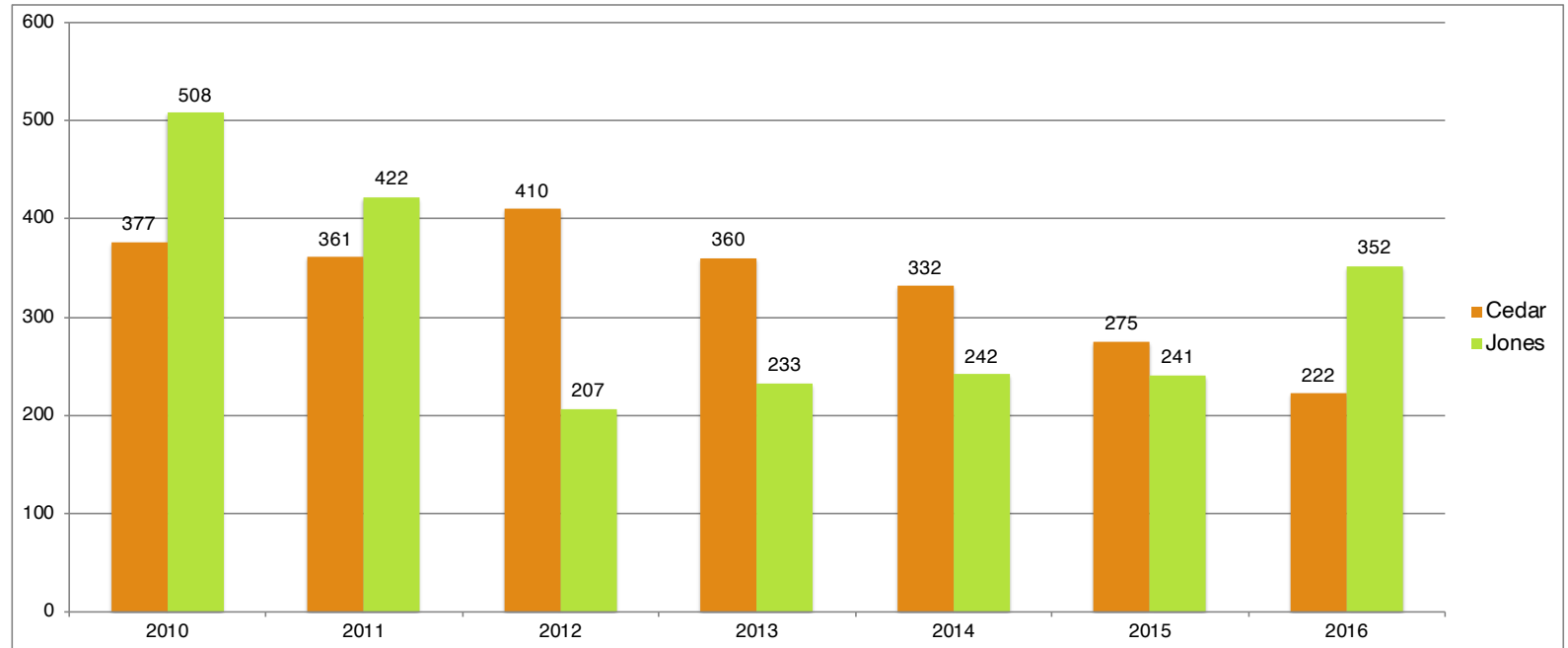


Crime Rates

For purposes of this report, Crimes Against Persons are counted by the number of victims.

Dept. of Public Safety -- website under repair

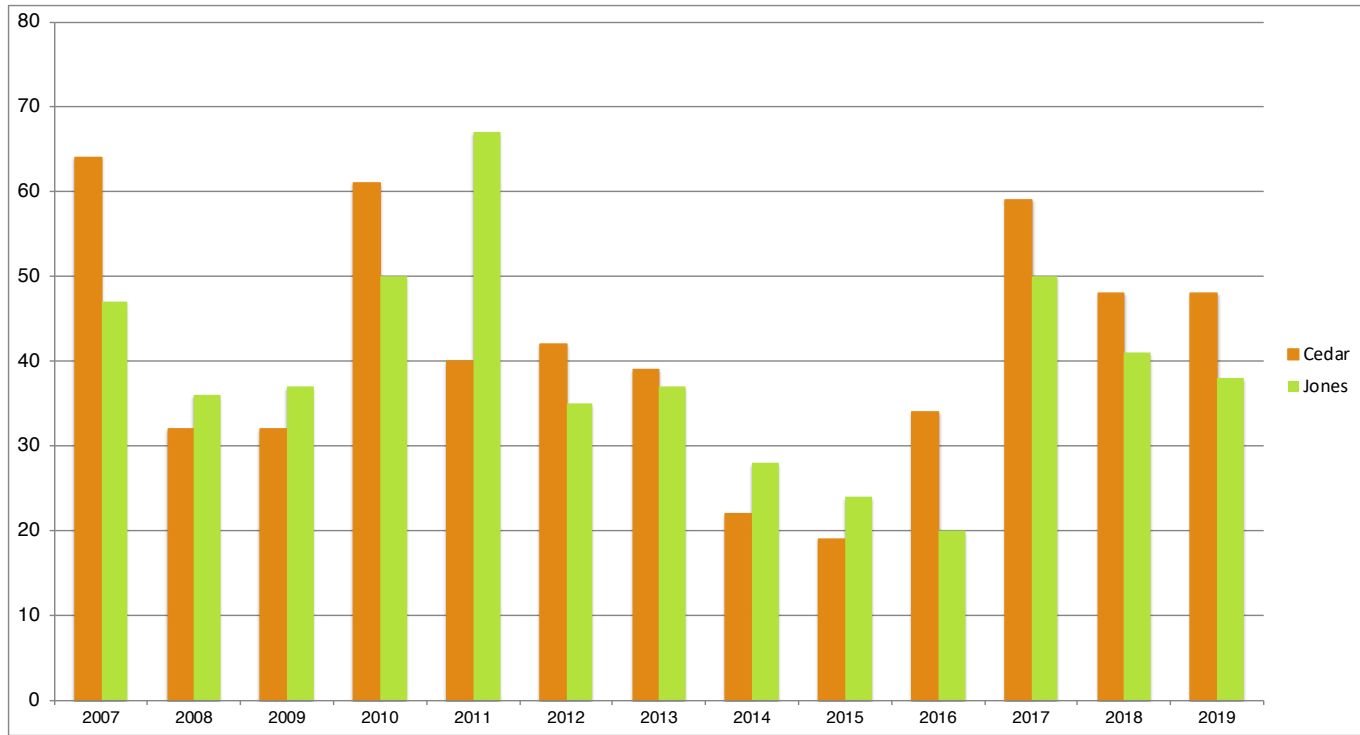
	Cedar	Jones
2010	377	508
2011	361	422
2012	410	207
2013	360	233
2014	332	242
2015	275	241
2016	222	352



Child Abuse Rates - Founded & Confirmed

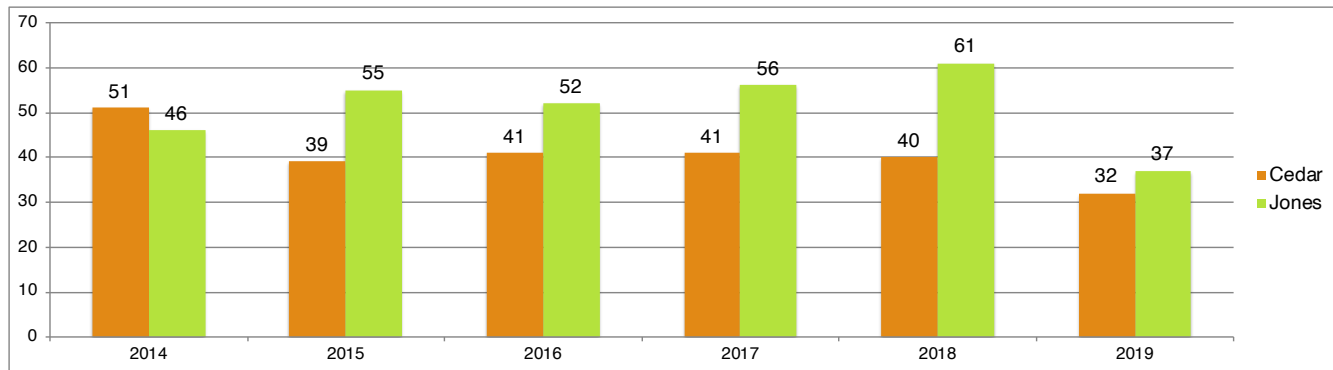
Dept. of Human Services -- <https://dhs.iowa.gov/reports/child-abuse-statistics>

	Cedar	Jones
2007	64	47
2008	32	36
2009	32	37
2010	61	50
2011	40	67
2012	42	35
2013	39	37
2014	22	28
2015	19	24
2016	34	20
2017	59	50
2018	48	41
2019	48	38



Child Abuse Rates - Family Assessments

	Cedar	Jones
2014	51	46
2015	39	55
2016	41	52
2017	41	56
2018	40	61
2019	32	37

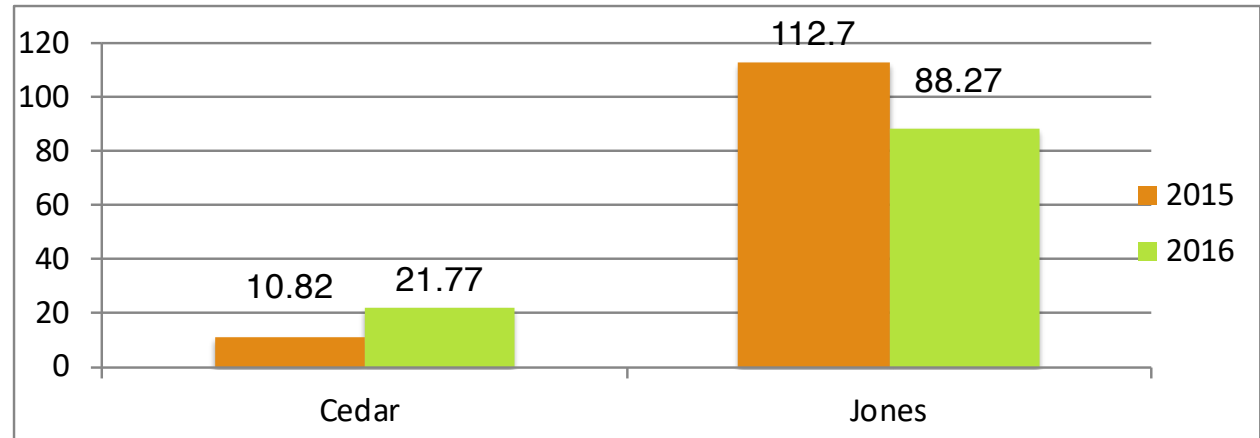


Domestic Violence Rates

Rate of Incidence per 100,000

Dept. of Public Safety -- website under repair

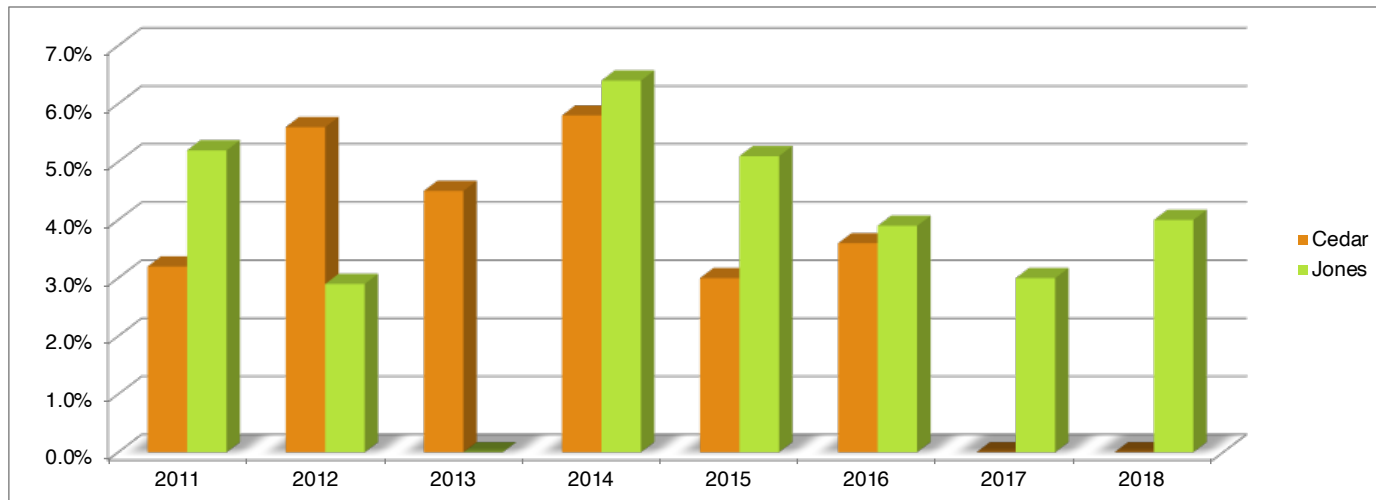
	Cedar	Jones
2015	10.82	112.7
2016	21.77	88.27



Teen Birth Rate

Dept. of Public Health -- <https://idph.iowa.gov/health-statistics/data>

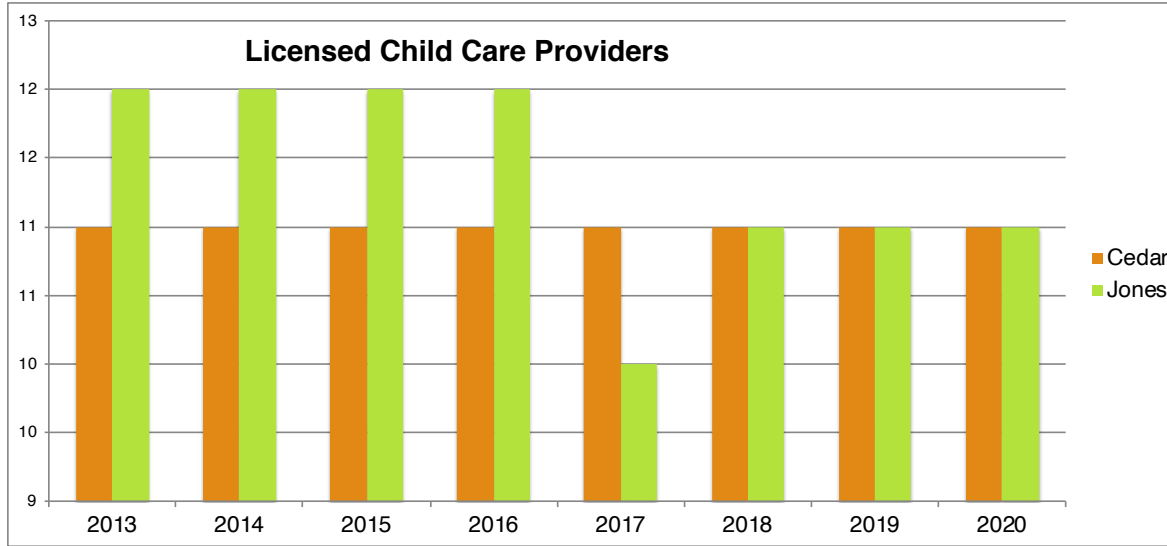
	Cedar	Jones
2011	3.2%	5.2%
2012	5.6%	2.9%
2013	4.5%	--
2014	5.8%	6.4%
2015	3.0%	5.1%
2016	3.6%	3.9%
2017	--	3.0%
2018	--	4.0%



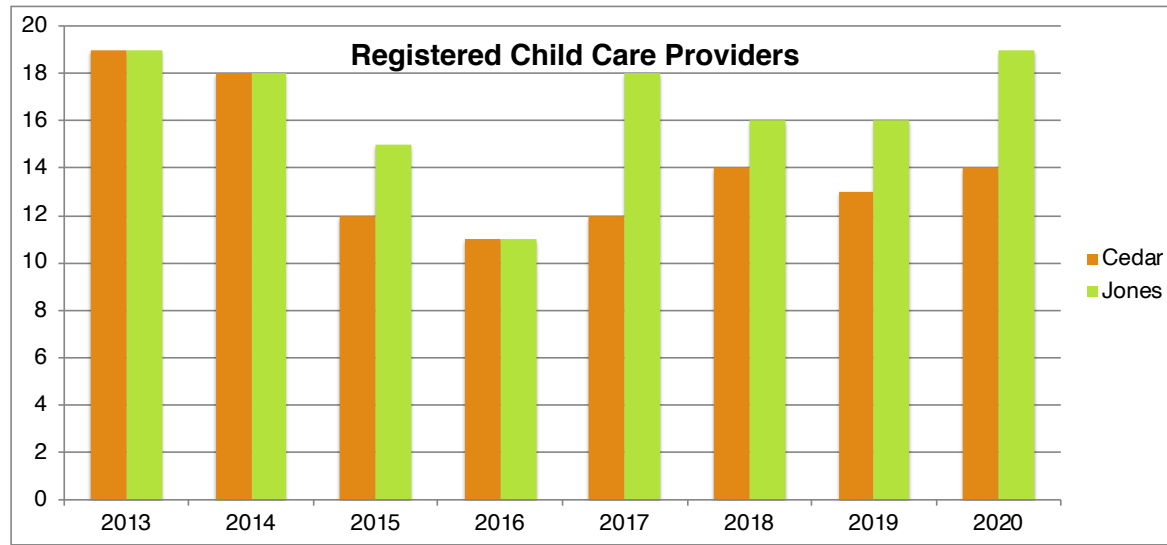
DHS LICENSED & REGISTERED CHILD CARE PROVIDERS

Dept. of Human Services -- <http://ccmis.dhs.state.ia.us/ClientPortal/ProviderSearch.aspx>

LICENSED	<i>Cedar</i>	<i>Jones</i>
2013	11	12
2014	11	12
2015	11	12
2016	11	12
2017	11	10
2018	11	11
2019	11	11
2020	11	11



REGISTERED	<i>Cedar</i>	<i>Jones</i>
2013	19	19
2014	18	18
2015	12	15
2016	11	11
2017	12	18
2018	14	16
2019	13	16
2020	14	19



QRS PARTICIPATION

of providers at each QRS Rating

Dept. of Human Services -- <https://dhs.iowa.gov/iqrs/providers>

	2016	2017	2018	2019	2020
Cedar	8	11	7	6	7
Jones	6	8	4	4	4

		QRS Levels				
		1	2	3	4	5
Cedar	2016	2	4	1	0	1
	2017	2	2	4	2	1
	2018	0	0	3	3	1
	2019	0	1	0	5	0
	2020	0	2	2	3	0
Jones	2016	1	3	0	0	2
	2017	2	3	0	2	1
	2018	1	1	1	1	0
	2019	0	0	2	2	0
	2020	1	0	0	3	0

