



A horizontal number line representing distance in feet. It starts at 0 on the left and ends at 1,020 on the right. Major tick marks are labeled at 0, 510, and 1,020. There are also minor tick marks at 255 and 765. The word "Feet" is written at the right end of the line.

This map does not represent a survey. No liability is assumed for the accuracy of the data delineated herein, either expressed or implied by Jones County or its employees. This map is compiled from official records, including plats, surveys, recorded deeds, and contracts, and only contains information required for local government purposes. See the recorded documents for more detailed legal information.

This map was produced from data maintained in the Jones County Geographic Information System. For further information regarding maps, data sources or the availability of GIS products and services, please contact the Jones County GIS Department at: (319) 462-5303.

2021 Aerials

Legend:



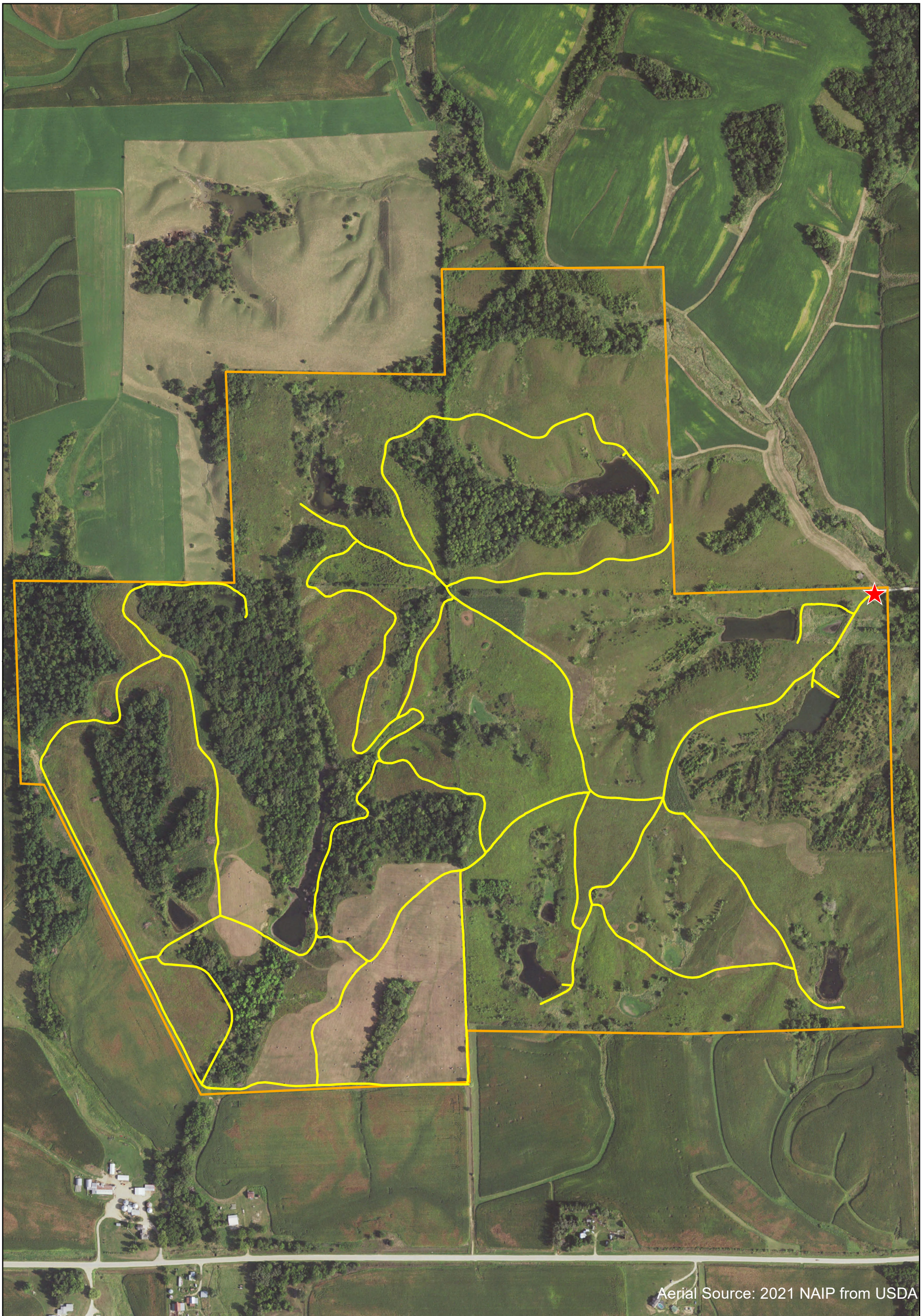
Parking Lot



Trails



Hale Wildlife Area Boundary



Aerial Source: 2021 NAIP from USDA