

2000 0199
 FILED
 RECORDERS OFFICE
 JONES COUNTY IOWA

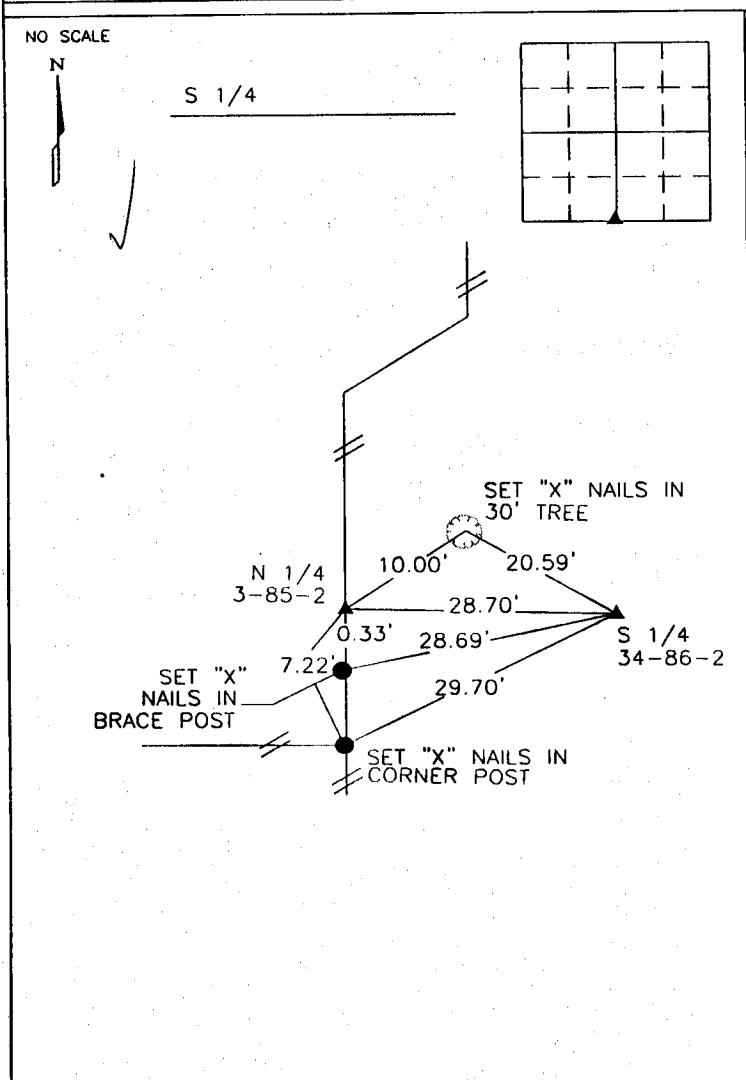
00 JAN 18 PM 12:14

MARIE KRUTZFIELD
 RECORDER 6.00 pcd

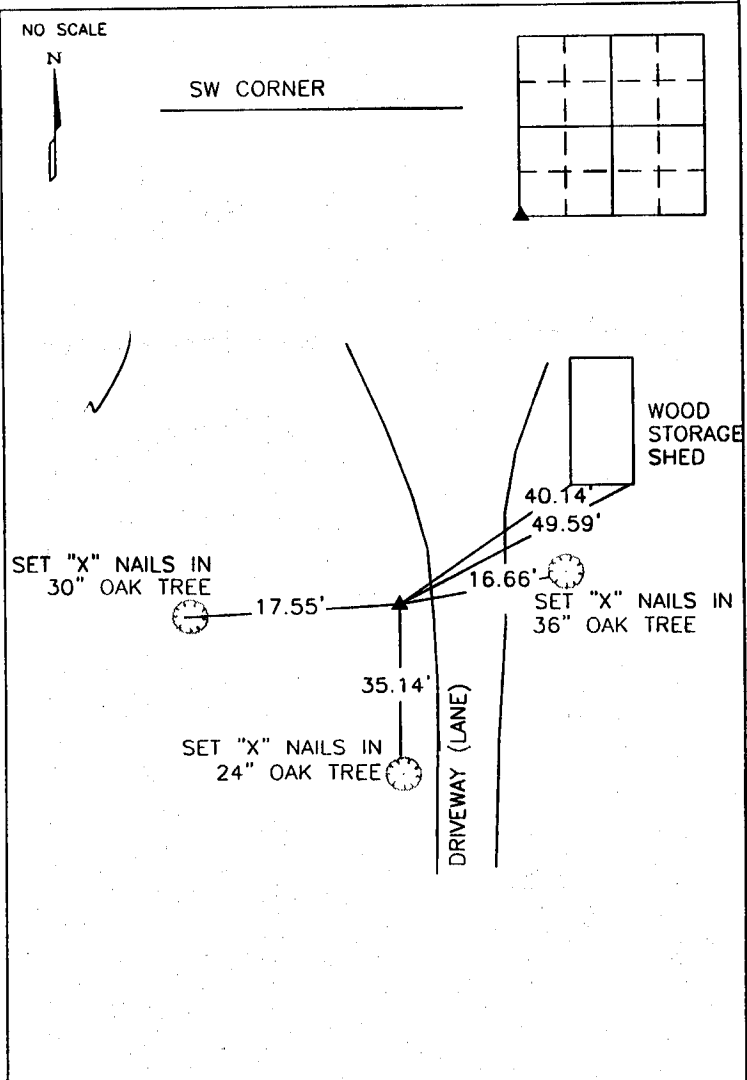
CLARENCE J. WALTON, BRAIN ENGINEERING, INC., 777 10TH STREET, MARION, IOWA 52302 PH. (319) 373-1318

UNITED STATES PUBLIC LAND SURVEY CORNER CERTIFICATE

LAND SURVEY MONUMENTS SITUATED IN SECTION 34, TOWNSHIP 86 NORTH
 RANGE 2 WEST OF THE 5TH P.M., JONES COUNTY, IOWA.

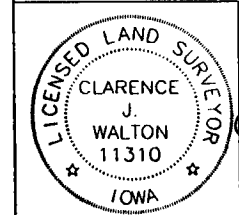


PREVIOUSLY RECORDED IN BOOK _____ PAGE _____
 MONUMENT DESCRIPTION AND HOW ESTABLISHED _____
 FOUND 1/2" REBAR WITH RED CAP #8295



PREVIOUSLY RECORDED IN BOOK _____ PAGE _____
 MONUMENT DESCRIPTION AND HOW ESTABLISHED _____
 FOUND 3' X 6' STONE.

I hereby certify that this land surveying document and the related survey work was performed by me or under my direct personal supervision and that I am a duly licensed Land Surveyor under the laws of the State of Iowa.
 Signed Clarence J. Walton Date 01/14/2000
 Clarence J. Walton, L.S.
 My License Renewal Date Is December 31, 2001
 License Number 11310
 Pages or sheets covered by this seal: _____ PAGES



CORNERS TO BE INDEXED

CORNER	SECTION	TOWNSHIP	RANGE
S 1/4	34	T86N	R2W
SW CORNER	34	T86N	R2W

BRAIN ENGINEERING, INC.
 777 10TH STREET
 MARION, IOWA 52302
 (319) 373-1318

25599-10

THIS IS NOT A CERTIFICATION

JONES COUNTY ENGINEER'S OFFICE, 19501 HWY. 64, ANAMOSA, IOWA, 52205 (319)462-3785

UNITED STATES PUBLIC LAND SURVEY CORNER CERTIFICATE

LAND SURVEY MONUMENTS SITUATED IN SECTION 3, TOWNSHIP 85
NORTH, RANGE 2 WEST OF THE 5TH P.M., JONES COUNTY, IOWA

CORNERS TO BE INDEXED

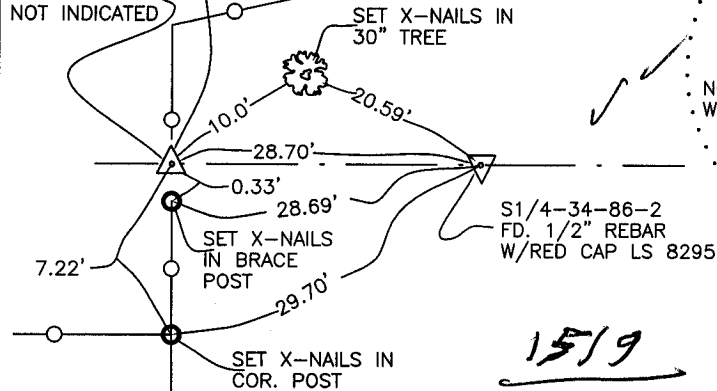
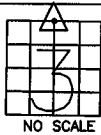
CORNER SECTION TOWNSHIP RANGE
N-QUARTER 3 85N 2W
OFFICE FILE NO.

85203c_111004.tif

(BRAIN ENGR)
N1/4-3-85-2
TYPE OF MON.
NOT INDICATED

TIES FROM
HERNANDEZ LEVY
9-2-89
SET SCM

REF:
BRAIN ENGR.
COR. TIES
2000-0199
JAN.-2000



PREVIOUSLY RECORDED IN BOOK _____, PAGE _____
MONUMENT DESCRIPTION AND HOW ESTABLISHED TYPE OF
MONUMENT NOT INDICATED FOR NORTH QUARTER OF SECTION 3,
TOWNSHIP 85 NORTH, RANGE 2 WEST OF THE 5TH PRINCIPAL MERIDIAN,
JONES COUNTY, IOWA. TIES SHOWN FOR COR TIES FILED IN 2000-0199
(S1/4-34-86-2) IN RECORDER'S OFFICE, JONES COUNTY, IOWA.

CORNERS TO BE INDEXED

CORNER SECTION TOWNSHIP RANGE
OFFICE FILE NO.

