

# THIS IS NOT A CERTIFICATION

JONES COUNTY ENGINEER'S OFFICE, 19501 HWY. 64, ANAMOSA, IOWA, 52205 (319)462-3785

## UNITED STATES PUBLIC LAND SURVEY CORNER CERTIFICATE

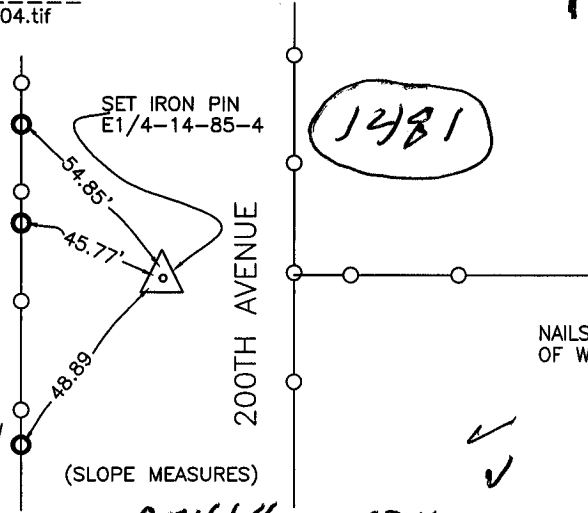
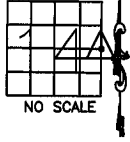
LAND SURVEY MONUMENTS SITUATED IN SECTION 14, TOWNSHIP 85  
NORTH, RANGE 4 WEST OF THE 5TH P.M., JONES COUNTY, IOWA

### CORNERS TO BE INDEXED

CORNER SECTION TOWNSHIP RANGE  
E-QUARTER 14 85N 4W

OFFICE FILE NO.

85414e\_062204.tif



REF:  
BOOK 285  
PAGE 24  
COUNTY  
SURVEY CREW  
POSTEL  
POWELL  
TARBOX

(SLOPE MEASURES)

*85414e-012405.tif*

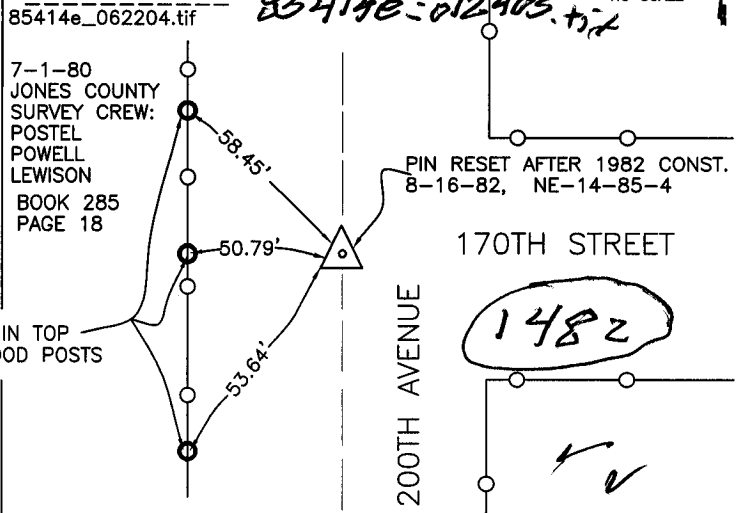
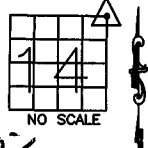
PREVIOUSLY RECORDED IN BOOK \_\_\_\_\_, PAGE \_\_\_\_\_  
MONUMENT DESCRIPTION AND HOW ESTABLISHED ORIGINAL  
STONE DESTROYED DURING CONSTRUCTION. SET IRON PIN IN PLACE OF  
(10-2-80) PIN RESET IN 1982. EAST QUARTER CORNER SECTION 14,  
TOWNSHIP 85 NORTH, RANGE 4 WEST OF THE 5TH PRINCIPAL MERIDIAN,  
JONES COUNTY, IOWA.

### CORNERS TO BE INDEXED

CORNER SECTION TOWNSHIP RANGE  
NORTHEAST 14 85N 4W

OFFICE FILE NO.

85414e\_062204.tif



7-1-80  
JONES COUNTY  
SURVEY CREW:  
POSTEL  
POWELL  
LEWISON  
BOOK 285  
PAGE 18

PIN RESET AFTER 1982 CONST.  
8-16-82, NE-14-85-4

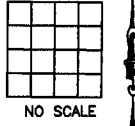
NAILS IN TOP  
OF WOOD POSTS

PREVIOUSLY RECORDED IN BOOK \_\_\_\_\_, PAGE \_\_\_\_\_ (7-01-80)  
MONUMENT DESCRIPTION AND HOW ESTABLISHED FOUND  
3"x6"x11" LIMESTONE DOWN 3.5'. SET 22" REBAR ABOVE. SET TIES  
AS INDICATED. NORTHEAST CORNER SECTION 14, TOWNSHIP 85 NORTH,  
RANGE 4 WEST OF THE 5TH PRINCIPAL MERIDIAN, JONES COUNTY,  
IOWA.

### CORNERS TO BE INDEXED

CORNER SECTION TOWNSHIP RANGE

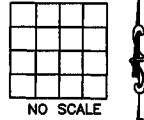
OFFICE FILE NO.



### CORNERS TO BE INDEXED

CORNER SECTION TOWNSHIP RANGE

OFFICE FILE NO.



PREVIOUSLY RECORDED IN BOOK \_\_\_\_\_, PAGE \_\_\_\_\_  
MONUMENT DESCRIPTION AND HOW ESTABLISHED \_\_\_\_\_

PREVIOUSLY RECORDED IN BOOK \_\_\_\_\_, PAGE \_\_\_\_\_  
MONUMENT DESCRIPTION AND HOW ESTABLISHED \_\_\_\_\_

~~I hereby declare that this plat, survey or report was made by me or under my direct personal supervision and that I am a duly registered Land Surveyor under the laws of the State of Iowa.~~

Signed: \_\_\_\_\_

SEAL

JONES COUNTY  
ENGINEER'S OFFICE

19501 HWY. 64,  
ANAMOSA, IOWA,  
52205 (319)462-3785