

2000 0355

FILED
RECORDERS OFFICE
JONES COUNTY IOWA

00 JAN 28 PM 1:09

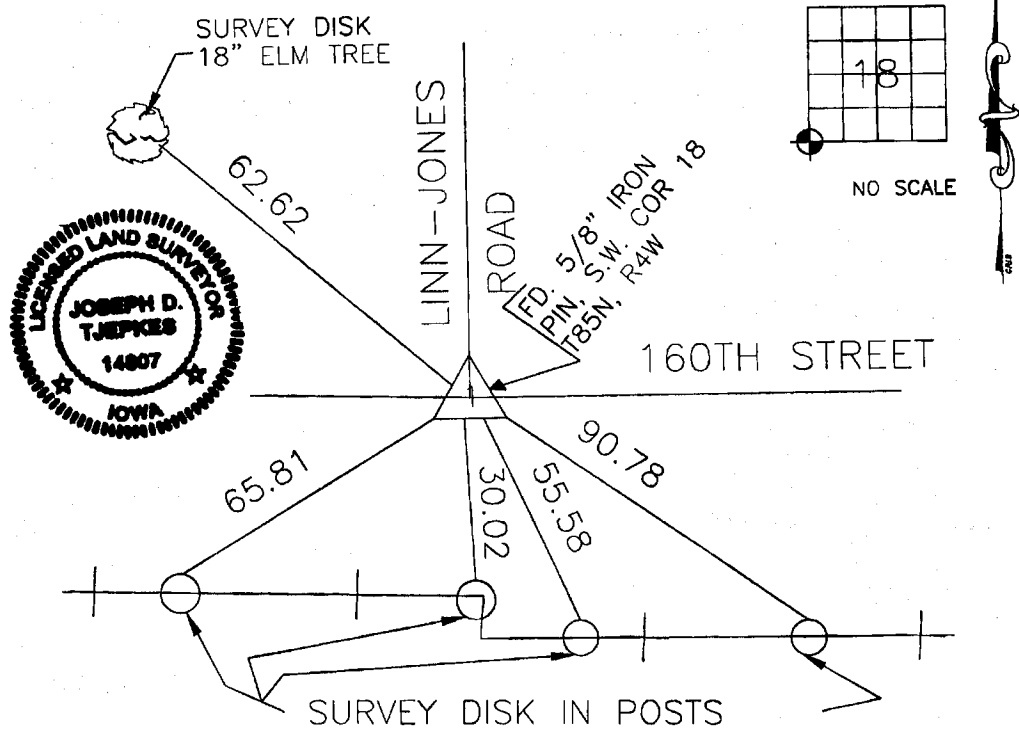
MARIE KRUTZFIELD
RECORDER NO FEE

0557

JONES COUNTY ENGINEER, 19501 HWY. 64, ANAMOSA, IOWA

UNITED STATES PUBLIC LAND SURVEY CORNER CERTIFICATE

LAND SURVEY MONUMENTS SITUATED IN SECTION 18, TOWNSHIP 85
NORTH, RANGE 4 WEST OF THE 5TH P.M., JONES COUNTY, IOWA



on
cord

PREVIOUSLY RECORDED IN BOOK 1999, PAGE 3217

MONUMENT DESCRIPTION AND HOW ESTABLISHED _____

FOUND 5/8" REBAR 0.3" BELOW ROAD SURFACE,

AS DESCRIBED IN HALL&HALL CORNER CERT.

FILED IN BOOK AND PAGE AS INDICATED ABOVE

SOME HALL&HALL TIES LOST DUE TO CONSTRUCTION
SET NEW REFERENCES

I hereby declare that this plat, survey or report was made by me or under my direct personal supervision and that I am a duly registered Land Surveyor under the laws of the State of Iowa.

Signed:

Joseph D. Tjepkes 1-25-2000

Joseph D. Tjepkes L.S. Iowa Reg. No. 14807
My Registration Renewal Date is December 31, 2000

CORNERS TO BE INDEXED
CORNER SECTION TOWNSHIP RANGE

S.W. 18 85N 4W

JONES COUNTY ENGINEER
19501 HWY. 64,
ANAMOSA, IOWA

85419a-012500

1999 3217
 FILED
 RECORDERS OFFICE
 JONES COUNTY IOWA

99 SEP -8 AM 10: 57

MARIE KRUTZFIELD
 RECORDER 6.00 Pd

PREPARED BY HALL & HALL ENGINEERS, INC. 209 29TH STREET N.E. CEDAR RAPIDS. IOWA 52402 (319) 382-9548

SECTION CORNER CERTIFICATE

OF
 LAND SURVEY MONUMENTS SITUATED IN SECTION 19, TOWNSHIP 85 NORTH,
 RANGE 4 WEST, OF THE FIFTH PRINCIPAL MERIDIAN, JONES COUNTY, IOWA.

PREVIOUSLY RECORDED IN BOOK _____ AT PAGE _____

MONUMENT DESCRIPTION AND REMARKS:

NW CORNER OF SEC. 19, FOUND 5/8" PEBBLE 4" BELOW THE SURFACE AT CENTERLINE OF
 LINN JONES ROAD AND 160TH STREET.

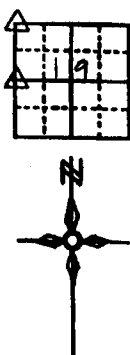
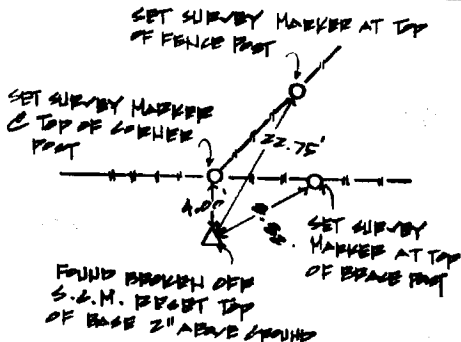
W 1/4 CORNER OF SEC. 19, FOUND SECTION CORNER MONUMENT WITH TOP BROKEN OFF, RISE
 UP BASE AND STRAIGHTENED, RESET TOP ON BASE 2" ABOVE GROUND.

N.E. CORNER N.W. 1/4 - N.W. 1/4 OF SEC. 19, SET 1/2" PEBBLE W/ CAP L.S. NO. 11954

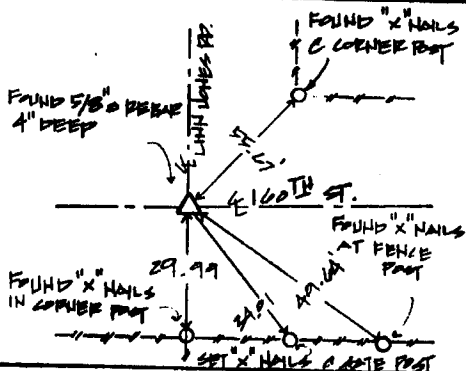
N.E. CORNER N.W. 1/4 - N.E. 1/4 OF SEC. 19, SET 1/2" PEBBLE W/ CAP L.S. NO. 11954

RECOVERY TIE DRAWING

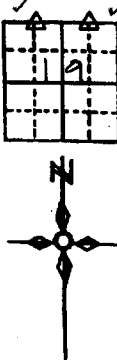
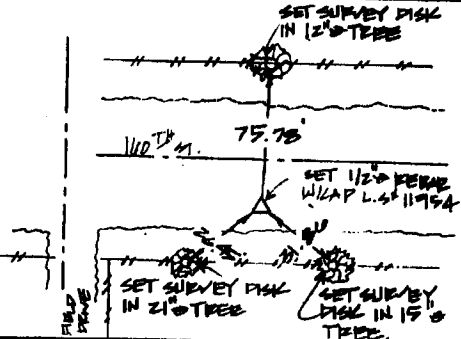
W 1/4 CORNER SEC. 19



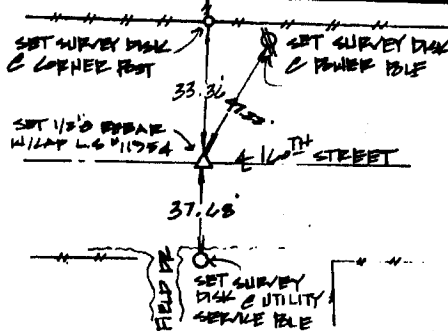
NW CORNER SEC. 19.



N.E. CORNER N.W. 1/4 - N.W. 1/4 SEC. 19



N.E. CORNER N.W. 1/4 - N.E. 1/4 SEC. 19



I hereby certify that this land surveying document was prepared and the related survey work was performed by me or under my direct personal supervision and that I am a duly Licensed Land Surveyor under the laws of the State of Iowa.

Signed: *Daniel J. Johnson* Date: 9-8-99
 Daniel J. Johnson, L.S. 11954
 My license expires on December 31, 2000

Pages or sheets covered by this book:
 (Enter submission unless specified here)

REASON FOR PREPARING CERTIFICATE

- A) THERE IS NO CERTIFICATE FOR THE CORNER ON FILE WITH THE RECORDER OF THE COUNTY IN WHICH THE CORNER IS LOCATED
- B) CORNER POSITION DIFFERS FROM THAT SHOWN IN THE PUBLIC RECORDS OF THE COUNTY IN WHICH THE CORNER IS LOCATED.
- C) THE CORNER MONUMENT HAS BEEN REPLACED OR MODIFIED
- D) THE REFERENCE TIES REFERRED TO IN AN EXISTING PUBLIC RECORD ARE INCORRECT

85419a-090899
 85419k-090899
 85419b-090899
 85419d-090899

LEGEND Δ GOVERNMENT CORNER ○ PROPERTY CORNER FOUND ○ 1/2" 1/2" W/ L.S. CAP SET --- 1/4" W/ L.S. CAP SET - - - - - PROPERTY LINE	SET FILE: US PUBLIC LAND SURVEY RECORD PROJECT FILE: JONES COUNTY ACQUISITION PLAT	HALL AND HALL ENGINEERS, INC. 209 29TH STREET N.E. CEDAR RAPIDS, IOWA 52402 (319) 382-9548
	DATE: 6.18.98 SCALE: N.T.S. COUNTY: JONES P.M.O.: 6526	