

2000 0351

FILED  
RECORDERS OFFICE  
JONES COUNTY IOWA

00 JAN 28 PM 1:05

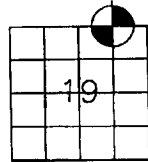
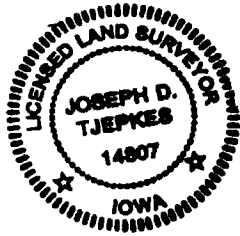
MARIE KRUTZFIELD  
RECORDER NO FEE

699

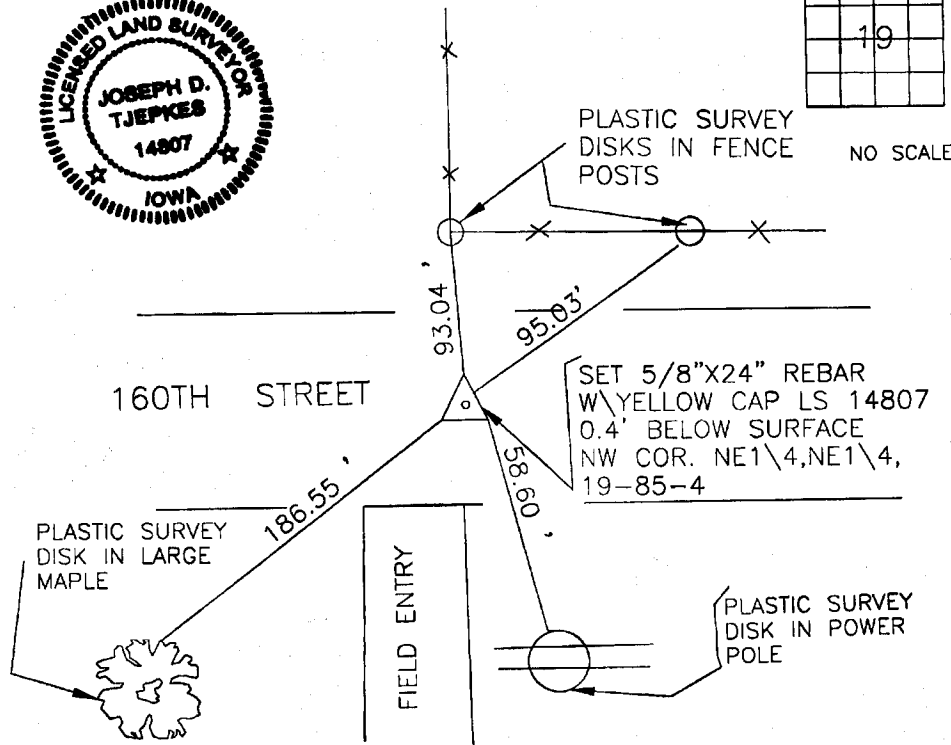
JONES COUNTY ENGINEER, 19501 HWY. 64, ANAMOSA, IOWA

# UNITED STATES PUBLIC LAND SURVEY CORNER CERTIFICATE

LAND SURVEY MONUMENTS SITUATED IN SECTION 19, TOWNSHIP 85  
NORTH, RANGE 4 WEST OF THE 5TH P.M., JONES COUNTY, IOWA



NO SCALE



ON  
Card

PREVIOUSLY RECORDED IN BOOK 1999, PAGE 3217  
 MONUMENT DESCRIPTION AND HOW ESTABLISHED HALL & HALL  
 PIN CAP AND REFERENCE TIES DESTROYED DURING COUNTY  
 ROAD CONSTRUCTION, REMONUMENTED CORNER WITH 5/8" X  
 24" REBAR WITH YELLOW CAP LS 14807 0.4' BELOW SURFACE  
 PER HALL & HALL ACQUISITION PLAT (PARCEL NO. 98154) AND  
 SET NEW REFERENCE TIES.

I hereby declare that this plat, survey or report was made by me or under my direct personal supervision and that I am a duly registered Land Surveyor under the laws of the State of Iowa.

Signed:

*Joseph D. Tjepkes* 1-25-2000  
 Joseph D. Tjepkes L.S. Iowa Reg. No. 14807  
 My Registration Renewal Date is December 31, 2000

### CORNERS TO BE INDEXED

CORNER	SECTION	TOWNSHIP	RANGE
NW COR.	19	85N	4W
NE1/4, NE1/4,			

JONES COUNTY ENGINEER  
 19501 HWY. 64,  
 ANAMOSA, IOWA

85419d-012500

99 SEP -8 AM 10:57

MARIE KRUTZFIELD  
RECORDER 6.00 Pd

PREPARED BY HALL & HALL ENGINEERS, INC. 209 29TH STREET N.E. CEDAR RAPIDS, IOWA 52402 (319) 382-9548

SECTION CORNER CERTIFICATE

OF  
LAND SURVEY MONUMENTS SITUATED IN SECTION 19, TOWNSHIP 85 NORTH,  
RANGE 4 WEST, OF THE FIFTH PRINCIPAL MERIDIAN, JONES COUNTY, IOWA.

PREVIOUSLY RECORDED IN BOOK \_\_\_\_\_ AT PAGE \_\_\_\_\_

MONUMENT DESCRIPTION AND REMARKS:

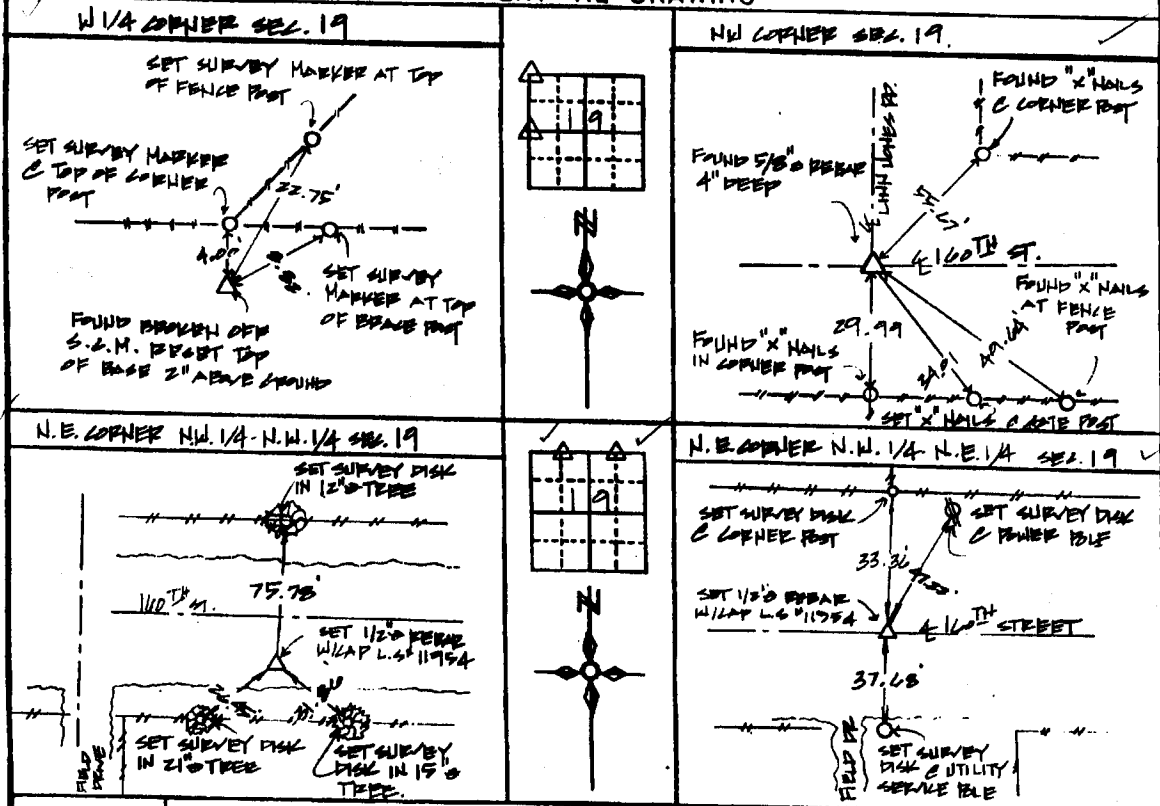
NW CORNER OF SEC. 19, FOUND 5/8" PEBBLE 4" BELOW THE SURFACE AT CENTERLINE OF  
LINN JONES ROAD AND 160TH STREET.

W 1/4 CORNER OF SEC. 19, FOUND SECTION CORNER MONUMENT WITH TOP BROKEN OFF, RISE  
UP BASE AND STRAIGHTENED, RESET TOP ON BASE 2" ABOVE GROUND.

N.E. CORNER N.W. 1/4 - N.W. 1/4 OF SEC. 19, SET 1/2" PEBBLE W/ CAP L.S. NO. 11954

N.E. CORNER N.W. 1/4 - N.E. 1/4 OF SEC. 19, SET 1/2" PEBBLE W/ CAP L.S. NO. 11954

RECOVERY TIE DRAWING



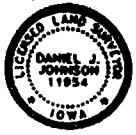
85419a-090899  
85419k-090899  
85419b-090899  
85419d-090899

I hereby certify that this land surveying document was prepared and the related survey work was performed by me or under my direct personal supervision and that I am a duly Licensed Land Surveyor under the laws of the State of Iowa.

Signed: *Daniel J. Johnson* Date: 9-8-99  
Daniel J. Johnson, L.S. 11954  
My license expires on December 31, 2000

Pages or sheets covered by this book:  
(Enter submission unless specified here)

- REASON FOR PREPARING CERTIFICATE
- A) THERE IS NO CERTIFICATE FOR THE CORNER ON FILE WITH THE RECORDER OF THE COUNTY IN WHICH THE CORNER IS LOCATED
  - B) CORNER POSITION DIFFERS FROM THAT SHOWN IN THE PUBLIC RECORDS OF THE COUNTY IN WHICH THE CORNER IS LOCATED.
  - C) THE CORNER MONUMENT HAS BEEN REPLACED OR MODIFIED
  - D) THE REFERENCE TIES REFERRED TO IN AN EXISTING PUBLIC RECORD ARE INCORRECT



LEGEND Δ GOVERNMENT CORNER ○ PROPERTY CORNER FOUND ○ 1/2" 3/8" W/ L.S. CAP SET --- 1" --- 1/2" W/ L.S. CAP SET --- PROPERTY LINE	SET FILE US PUBLIC LAND SURVEY RECORD	HALL AND HALL ENGINEERS, INC. 209 29TH STREET N.E. CEDAR RAPIDS, IOWA 52402 (319) 382-9548
	PROJECT FILE JONES COUNTY ACQUISITION PLAT	
DATE 9-8-99	SCALE N.T.S.	COUNTY JONES