

2000 0347

FILED
RECORDERS OFFICE
JONES COUNTY IOWA

00 JAN 28 PM 1:01

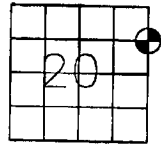
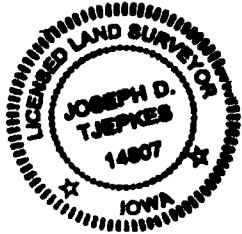
MARIE KRUTZFIELD
RECORDER NO FEE

655

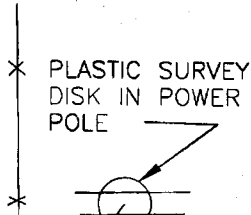
JONES COUNTY ENGINEER, 19501 HWY. 64, ANAMOSA, IOWA

UNITED STATES PUBLIC LAND SURVEY CORNER CERTIFICATE

LAND SURVEY MONUMENTS SITUATED IN SECTION 20, TOWNSHIP 85
NORTH, RANGE 4 WEST OF THE 5TH P.M., JONES COUNTY, IOWA



NO SCALE

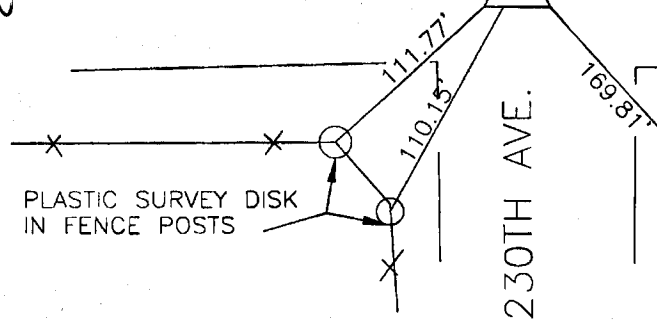


PLASTIC SURVEY
DISK IN POWER
POLE

Handwritten note: 20
2000

SET 5/8"x24" REBAR W/CAP
LS 14807, 0.4' BELOW SURFACE
NE COR, SE1/4, NE1/4
20-85-4

158TH STREET



230TH AVE.

PLASTIC SURVEY DISK
IN POWER POLE

85420j - 01a500

PREVIOUSLY RECORDED IN BOOK 1999, PAGE 3209
MONUMENT DESCRIPTION AND HOW ESTABLISHED RECORDED
CORNER AND REFERENCE TIES DESTROYED DURING COUNTY ROAD
CONSTRUCTION, REMONUMENTED WITH 5/8"x24" REBAR AND YELLOW
LS CAP 14807 PER HALL & HALL ACQUISITION PLAT (PARCEL NO. 98-116)
0.4' BELOW ROAD SURFACE AND SET NEW REFERENCE TIES AS INDICATED
ABOVE.

I hereby declare that this plat, survey or report was made by me or under my direct personal supervision and that I am a duly registered Land Surveyor under the laws of the State of Iowa.

Signed: *Joseph D. Tjepkes* 1-25-2000

Joseph D. Tjepkes L.S. Iowa Reg. No. 14807
My Registration Renewal Date is December 31, 2000

CORNERS TO BE INDEXED

CORNER	SECTION	TOWNSHIP	RANGE
NE COR	20	85N	4W
SE1/4			
NE1/4			

JONES COUNTY ENGINEER
19501 HWY. 64,
ANAMOSA, IOWA

1999 3209

FILED
RECORDERS OFFICE
JONES COUNTY IOWA

99 SEP -8 AM 10:49

MARIE KRUTZFIELD
RECORDER 600fd

PREPARED BY HALL & HALL ENGINEERS, INC. 209 20TH STREET N.E. CEDAR RAPIDS, IOWA 52402 (319) 362-9548

SECTION CORNER CERTIFICATE

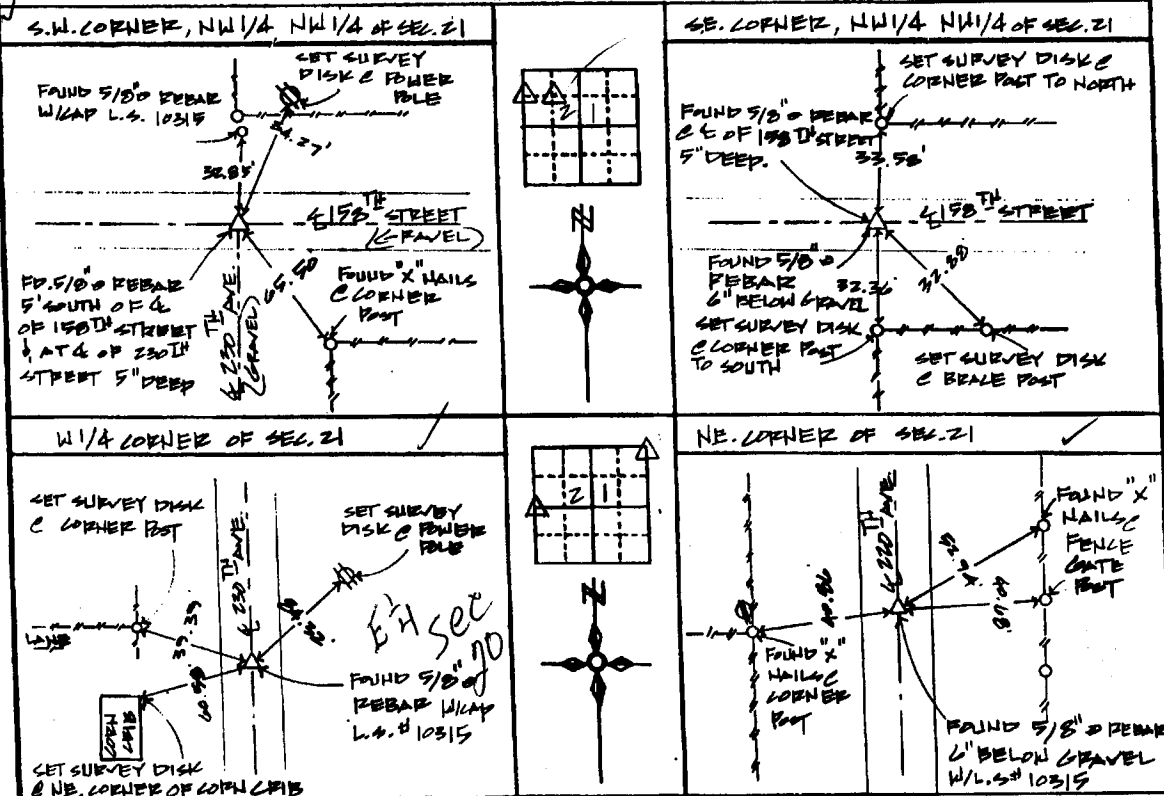
OF
LAND SURVEY MONUMENTS SITUATED IN SECTION 21, TOWNSHIP 35 NORTH,
RANGE 4 WEST, OF THE FIFTH PRINCIPAL MERIDIAN, JONES COUNTY, IOWA.

PREVIOUSLY RECORDED IN BOOK _____ AT PAGE _____

MONUMENT DESCRIPTION AND REMARKS:

S.W. CORNER N.W. 1/4 - N.W. 1/4 OF SECTION 21, FOUND 5/8" REBAR
S.E. CORNER N.W. 1/4 - N.W. 1/4 OF SECTION 21, FOUND 5/8" REBAR
E 1/4 CORNER OF SECTION 21, FOUND 5/8" REBAR W/ CAP L.S. # 10315
NE CORNER OF SECTION 21, FOUND 5/8" REBAR W/ CAP L.S. # 10315

RECOVERY TIE DRAWING



85421g-090899
85420j-090899
85421e-090899
85420o-090899

I hereby certify that this land surveying document was prepared and the related survey work was performed by me or under my direct personal supervision and that I am a duly Licensed Land Surveyor under the laws of the State of Iowa.

Signed: *[Signature]* Date: 9-8-99
Daniel J. Johnson, L.S. 1954
My license renewed on December 31, 2002

Pages or sheets covered by this seal:
(Entire submission unless specified here)

REASON FOR PREPARING CERTIFICATE:

- A) THERE IS NO CERTIFICATE FOR THE CORNER ON FILE WITH THE RECORDER OF THE COUNTY IN WHICH THE CORNER IS LOCATED
- B) CORNER POSITION DIFFERS FROM THAT SHOWN IN THE PUBLIC RECORDS OF THE COUNTY IN WHICH THE CORNER IS LOCATED
- C) THE CORNER MONUMENT HAS BEEN REPLACED OR MODIFIED
- D) THE REFERENCE TIES REFERRED TO IN AN EXISTING PUBLIC RECORD ARE INCORRECT

LEGEND Δ GOVERNMENT CORNER ○ PROPERTY CORNER FOUND ○ 1/2" x 3/4" w/ L.S. CAP SET --- 155' FENCE LINE - - - - - PROPERTY LINE	SHEET 011 U.S. PUBLIC LAND SURVEY RECORD PROJECT FILE JONES COUNTY ACQUISITION PLATS	HALL AND HALL ENGINEERS, INC. 209 20TH STREET N.E. CEDAR RAPIDS, IOWA 52402 (319) 362-9548
	DRAWN BY T.M.R. CHECKED BY djd DATE 7-2-98 SCALE H.T.S.	COUNTY JONES P.M. 6525