

1999 3209

FILED
RECORDERS OFFICE
JONES COUNTY IOWA

99 SEP -8 AM 10:49

MARIE KRUTZFIELD
RECORDER 600fd

PREPARED BY HALL & HALL ENGINEERS, INC. 209 28TH STREET N.E. CEDAR RAPIDS, IOWA 52402 (319) 362-9548

SECTION CORNER CERTIFICATE

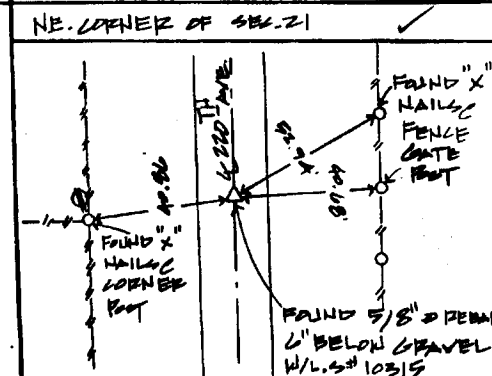
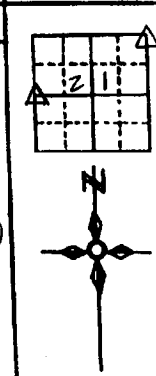
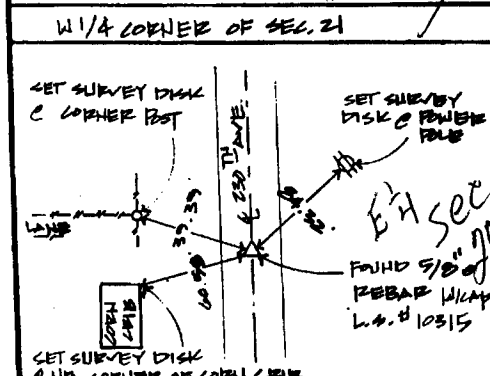
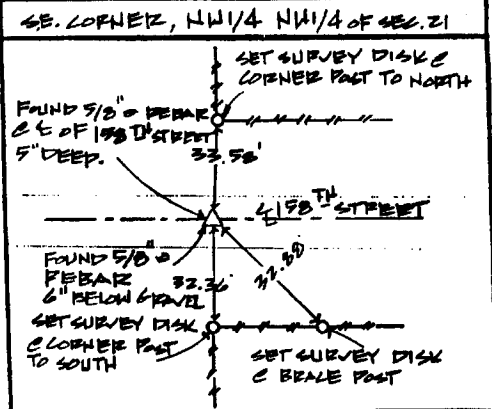
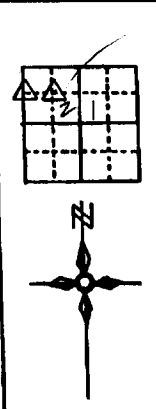
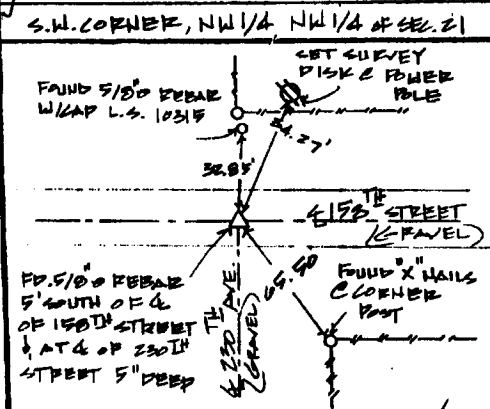
OF
LAND SURVEY MONUMENTS SITUATED IN SECTION 21, TOWNSHIP 35 NORTH,
RANGE 4 WEST, OF THE FIFTH PRINCIPAL MERIDIAN, JONES COUNTY, IOWA.

PREVIOUSLY RECORDED IN BOOK _____ AT PAGE _____

MONUMENT DESCRIPTION AND REMARKS:

S.W. CORNER N.W. 1/4 - N.W. 1/4 OF SECTION 21, FOUND 5/8" REBAR
S.E. CORNER N.W. 1/4 - N.W. 1/4 OF SECTION 21, FOUND 5/8" REBAR
E 1/4 CORNER OF SECTION 21, FOUND 5/8" REBAR W/ CAP L.S. # 10315
NE CORNER OF SECTION 21, FOUND 5/8" REBAR W/ CAP L.S. # 10315

RECOVERY TIE DRAWING



I hereby certify that this land surveying document was prepared and the related survey work was performed by me or under my direct personal supervision and that I am a duly Licensed Land Surveyor under the laws of the State of Iowa.
Signed: Daniel J. Johnson Date: 9-8-99
Daniel J. Johnson, L.S. 11954
My license expires on December 31, 2002
Pages or sheets covered by this seal:
(Entire submission unless specified here)

- REASON FOR PREPARING CERTIFICATE:
- A) THERE IS NO CERTIFICATE FOR THE CORNER ON FILE WITH THE RECORDER OF THE COUNTY IN WHICH THE CORNER IS LOCATED
 - B) CORNER POSITION DIFFERS FROM THAT SHOWN IN THE PUBLIC RECORDS OF THE COUNTY IN WHICH THE CORNER IS LOCATED
 - C) THE CORNER MONUMENT HAS BEEN REPLACED OR MODIFIED
 - D) THE REFERENCE TIES REFERRED TO IN AN EXISTING PUBLIC RECORD ARE INCORRECT

854219-090899
854205-090899
85421e-090899
854200-090899

LEGEND △ GOVERNMENT CORNER ○ PROPERTY CORNER FOUND ○ 1/2" x 3/4" w/ L.S. CAP SET --- 185' FENCE LINE - - - PROPERTY LINE	SHEET 011 PROJECT JONES COUNTY ACQUISITION PLATS	HALL AND HALL ENGINEERS, INC. 209 28TH STREET N.E. CEDAR RAPIDS, IOWA 52402 (319) 362-9548
	DATE 7-2-98 SCALE H.T.S.	NO. 03 COUNTY JONES