

20000354

FILED
RECORDERS OFFICE
JONES COUNTY IOWA

00 JAN 28 PM 1:08

MARIE KRUTZFIELD
RECORDER NO FEE

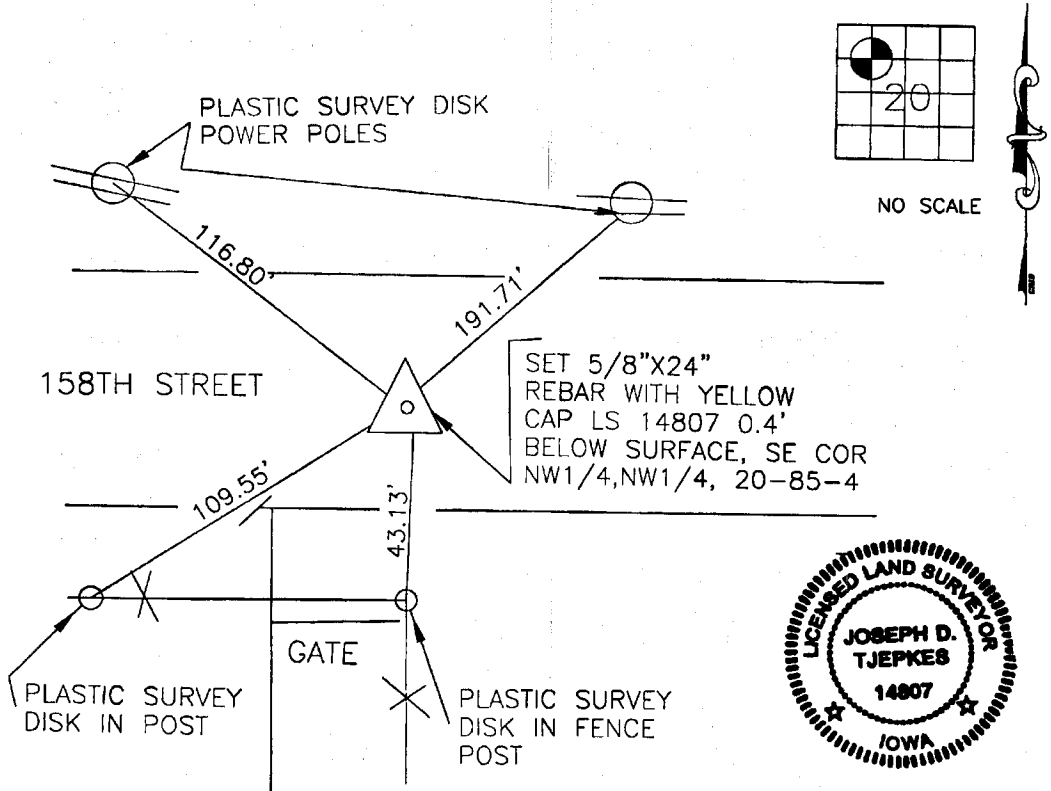
Cass

JONES COUNTY ENGINEER, 19501 HWY. 64, ANAMOSA, IOWA

UNITED STATES PUBLIC LAND SURVEY CORNER CERTIFICATE

LAND SURVEY MONUMENTS SITUATED IN SECTION 20, TOWNSHIP 85
NORTH, RANGE 4 WEST OF THE 5TH P.M., JONES COUNTY, IOWA

ON
CORD



PREVIOUSLY RECORDED IN BOOK 1999, PAGE 3221
 MONUMENT DESCRIPTION AND HOW ESTABLISHED FOUND
 1/2" REBAR BENT OVER DURING ROAD CONSTRUCTION, SET 5/8"X24" REBAR WITH
 YELLOW CAP, LS 14807 ALONGSIDE BENT PIN 0.4' BELOW SURFACE PER HALL &
 HALL ACQUISITION PLAT (PARCEL NO. 98-107) RESET NEW REFERENCE TIES
 AS INDICATED ABOVE.

854209-012500

I hereby declare that this plat, survey or report was made by me or under my direct personal supervision and that I am a duly registered Land Surveyor under the laws of the State of Iowa.

Signed: *Joseph D. Tjepkes* 1-25-2000

Joseph D. Tjepkes L.S. Iowa Reg. No. 14807
 My Registration Renewal Date is December 31, 2000

CORNERS TO BE INDEXED

CORNER	SECTION	TOWNSHIP	RANGE
SECOR	20	85N	4W
NW1/4			
NW1/4			

JONES COUNTY ENGINEER
 19501 HWY. 64,
 ANAMOSA, IOWA

1999 3221

FILED
RECORDERS OFFICE
JONES COUNTY IOWA

99 SEP -8 AM 11:01

MARIE KRUTZFIELD
RECORDER 6.00 PD

PREPARED BY HALL & HALL ENGINEERS, INC. 209 29TH STREET N.E. CEDAR RAPIDS, IOWA 52402 (319) 362-9548

SECTION CORNER CERTIFICATE

OF
LAND SURVEY MONUMENTS SITUATED IN SECTION 20, TOWNSHIP 35 NORTH,
RANGE 4 WEST, OF THE FIFTH PRINCIPAL MERIDIAN, WANE COUNTY, IOWA.

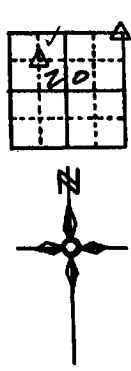
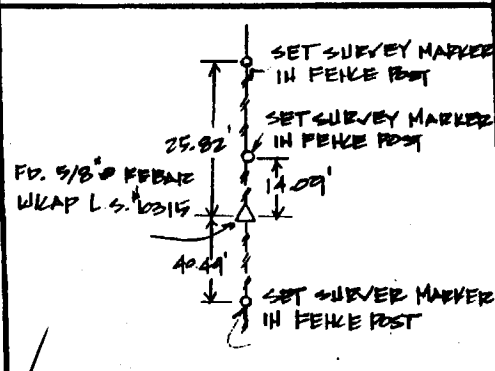
PREVIOUSLY RECORDED IN BOOK _____ AT PAGE _____

MONUMENT DESCRIPTION AND REMARKS:

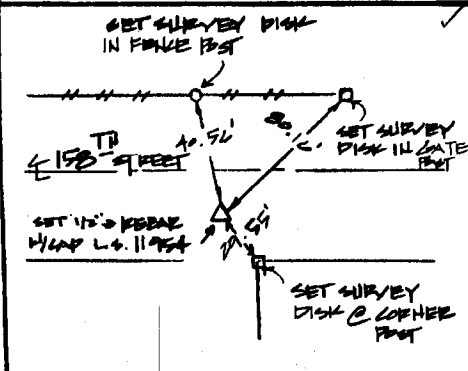
- NE CORNER OF SECTION 20, FOUND 5/8" PEBAE W/CAP L.S. 10315
- N.E. CORNER OF S.E. 1/4 - N.W. 1/4 OF SECTION 20, SET 1/2" PEBAE W/CAP L.S. NO 11954
- N.E. CORNER OF S.E. 1/4 - N.W. 1/4 OF SECTION 20, SET 1/2" PEBAE W/CAP L.S. NO 11954
- N.E. CORNER OF S.W. 1/4 - N.E. 1/4 OF SECTION 20, SET 1/2" PEBAE W/CAP L.S. NO 11954

RECOVERY TIE DRAWING

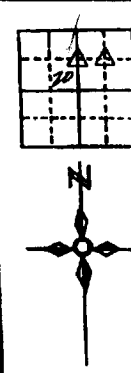
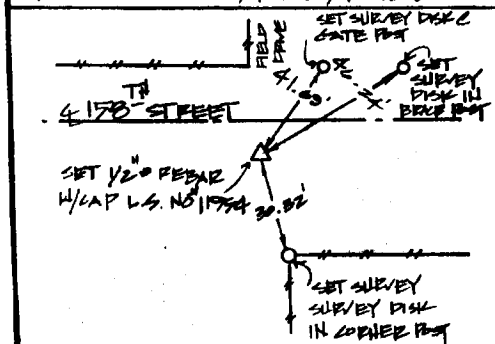
NE CORNER SECTION 20



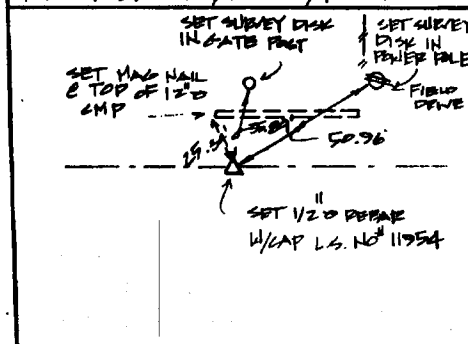
N.E. COR. S.W. 1/4 - N.W. 1/4 OF SEC. 20



N.E. CORNER S.E. 1/4 - N.W. 1/4 SEC. 20



N.E. CORNER S.W. 1/4 - N.E. 1/4 OF SEC. 20



I hereby certify that this land surveying document was prepared and the related survey work was performed by me or under my direct personal supervision and that I am a duly Licensed Land Surveyor under the laws of the State of Iowa.

Signed: Daniel J. Johnson Date: 9-8-99

Daniel J. Johnson, L.S. #11954
My license renewal date is December 31, 2002

Pages or sheets covered by this cert:
(Entire submission unless specified here)

- REASON FOR PREPARING CERTIFICATE
- A) THERE IS NO CERTIFICATE FOR THE CORNER ON FILE WITH THE RECORDER OF THE COUNTY IN WHICH THE CORNER IS LOCATED
 - B) CORNER POSITION DIFFERS FROM THAT SHOWN IN THE PUBLIC RECORDS OF THE COUNTY IN WHICH THE CORNER IS LOCATED
 - C) THE CORNER MONUMENT HAS BEEN REPLACED OR MODIFIED
 - D) THE REFERENCE TIES REFERRED TO IN AN EXISTING PUBLIC RECORD ARE INCORRECT

85420e-090899
85420g-090899
85420i-090899
85420h-090899

GOVERNMENT CORNER PROPERTY CORNER FOLIO 1/2" 150' W/ L.S. CAP SET 1" EXISTING FENCE LINE PROPERTY LINE	SHEET NO. <u>1</u> OF <u>1</u>	U.S. PUBLIC LAND SURVEY RECORD	HALL AND HALL ENGINEERS, INC. 209 29TH STREET N.E. CEDAR RAPIDS, IOWA 52402 (319) 362-9548
	PROJECT NO. <u>1</u>	JONES COUNTY ACQUISITION PLAT	