

2000 0349

FILED  
RECORDERS OFFICE  
JONES COUNTY IOWA

00 JAN 28 PM 1:03

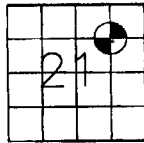
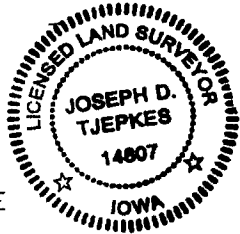
MARIE KRUTZFIELD  
RECORDER NO FEE

655

JONES COUNTY ENGINEER, 19501 HWY. 64, ANAMOSA, IOWA

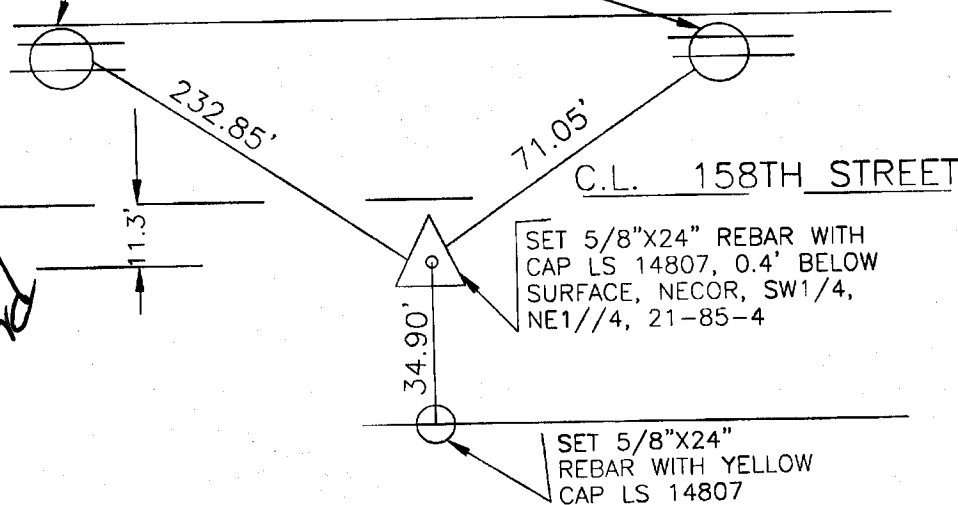
# UNITED STATES PUBLIC LAND SURVEY CORNER CERTIFICATE

LAND SURVEY MONUMENTS SITUATED IN SECTION 21, TOWNSHIP 85  
NORTH, RANGE 4 WEST OF THE 5TH P.M., JONES COUNTY, IOWA



SET PLASTIC SURVEY DISK IN POWER POLE

SET PLASTIC SURVEY DISK IN POWER POLE NO SCALE



854211-012500

PREVIOUSLY RECORDED IN BOOK 1999, PAGE 3210  
MONUMENT DESCRIPTION AND HOW ESTABLISHED HALL & HALL  
PIN AND CAP AND REFERENCE TIES DESTROYED DURING ROAD CONSTRUCTION  
RE-MONUMENTED WITH 5/8"X24" REBAR WITH YELLOW CAP LS 14807 0.4'  
BELOW ROAD SURFACE PER HALL & HALL ACQUISITION PLAT  
(PARCEL NO. 98-121) AND SET NEW REFERENCE TIES AS INDICATED ABOVE.

I hereby declare that this plat, survey or report was made by me or under my direct personal supervision and that I am a duly registered Land Surveyor under the laws of the State of Iowa.

Signed:

*Joseph D. Tjepkes* 1-25-2000  
Joseph D. Tjepkes L.S. Iowa Reg. No. 14807  
My Registration Renewal Date is December 31, 2000

### CORNERS TO BE INDEXED

CORNER	SECTION	TOWNSHIP	RANGE
NE COR	21	85N	4W
SW1/4			
NE1/4			

JONES COUNTY ENGINEER  
19501 HWY. 64,  
ANAMOSA, IOWA

1999 3210  
FILED

RECORDERS OFFICE  
JONES COUNTY IOWA

99 SEP -8 AM 10:50

MARIE KRUTZFIELD  
RECORDER 6:00 PM

PREPARED BY HALL & HALL ENGINEERS, INC. 209 29TH STREET N.E. CEDAR RAPIDS, IOWA 52402 (319) 382-9548

SECTION CORNER CERTIFICATE

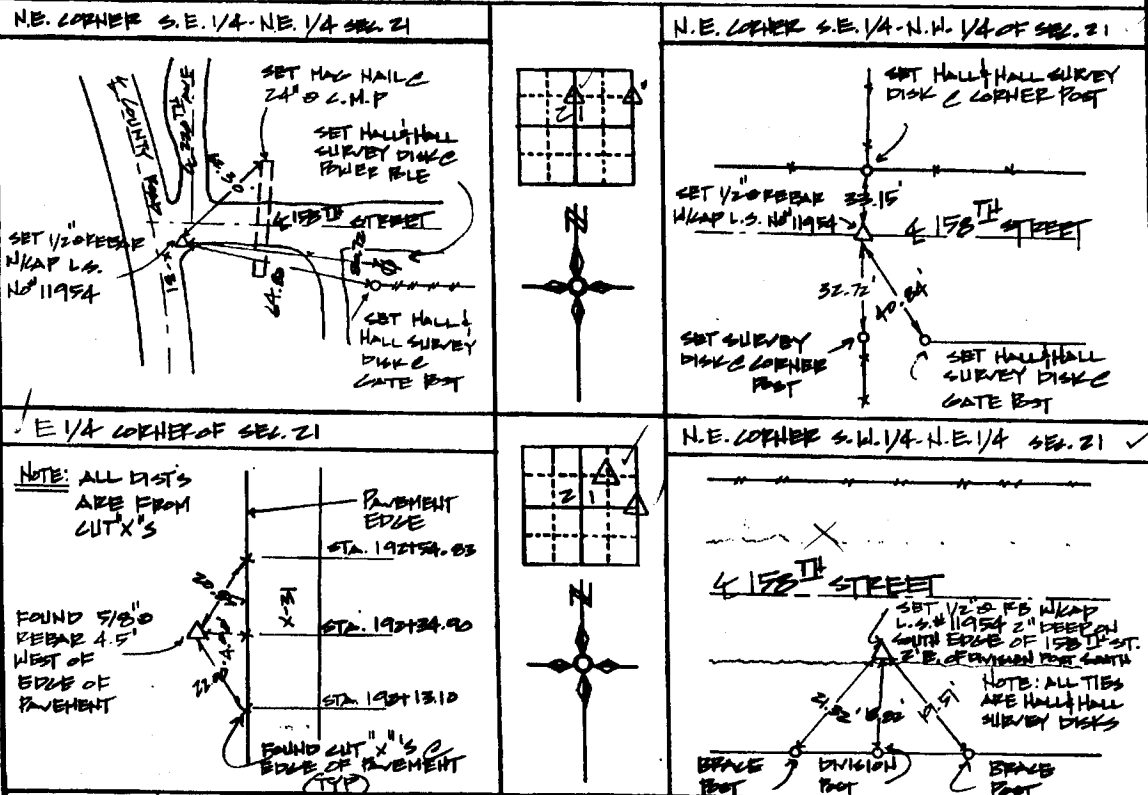
OF  
LAND SURVEY MONUMENTS SITUATED IN SECTION 21, TOWNSHIP 35 NORTH,  
RANGE 4 WEST, OF THE FIFTH PRINCIPAL MERIDIAN, JONES COUNTY, IOWA.

PREVIOUSLY RECORDED IN BOOK \_\_\_\_\_ AT PAGE \_\_\_\_\_

MONUMENT DESCRIPTION AND REMARKS:

N.E. CORNER OF THE S.E. 1/4 - N.E. 1/4 OF SECTION 21, SET 1/2" REBAR W/ CAP L.S. #11954  
N.E. CORNER OF THE S.E. 1/4 - N.W. 1/4 OF SECTION 21, SET 1/2" REBAR W/ CAP L.S. #11954  
E 1/4 CORNER OF SECTION 21, FOUND 5/8" REBAR  
N.E. CORNER OF S.W. 1/4 - N.E. 1/4 OF SECTION 21, SET 1/2" REBAR W/ CAP L.S. #11954

RECOVERY TIE DRAWING



I hereby certify that this land surveying document was prepared and the related survey work was performed by me or under my direct personal supervision and that I am a duly Licensed Land Surveyor under the laws of the State of Iowa.

Signature: *Daniel J. Johnson* Date: 9-8-99  
Daniel J. Johnson, L.S. #11954  
My license renewed on December 31, 2000

Pages or sheets covered by this seal:  
(Entire submission unless specified here)

- REASON FOR PREPARING CERTIFICATE:
- A) THERE IS NO CERTIFICATE FOR THE CORNER ON FILE WITH THE RECORDER OF THE COUNTY IN WHICH THE CORNER IS LOCATED
  - B) CORNER POSITION DIFFERS FROM THAT SHOWN IN THE PUBLIC RECORDS OF THE COUNTY IN WHICH THE CORNER IS LOCATED
  - C) THE CORNER MONUMENT HAS BEEN REPLACED OR MODIFIED
  - D) THE REFERENCE TIES REFERRED TO IN AN EXISTING PUBLIC RECORD ARE INCORRECT

85421h-090899  
85421j-090899  
85421i-090899  
85421o-090899

SPECIAL 1. GOVERNMENT CORNER 2. PROPERTY CORNER FOUND 3. 1/2" 130° W/ L.S. CAP SET 4. EXISTING FENCE LINE 5. PROPERTY LINE	SHEET TITLE: US PUBLIC LAND SURVEY RECORD PROJECT TITLE: JONES COUNTY ACQUISITION PLATS	HALL AND HALL ENGINEERS, INC. 209 29TH STREET N.E. CEDAR RAPIDS, IOWA 52402 (319) 382-9548
	C 13 T.M.E 2 D.V.U 1 D.V.U 1 12-10-98 SCAFF N.T.S	