

2000 0344

FILED
RECORDERS OFFICE
JONES COUNTY IOWA

00 JAN 28 PM 12:58

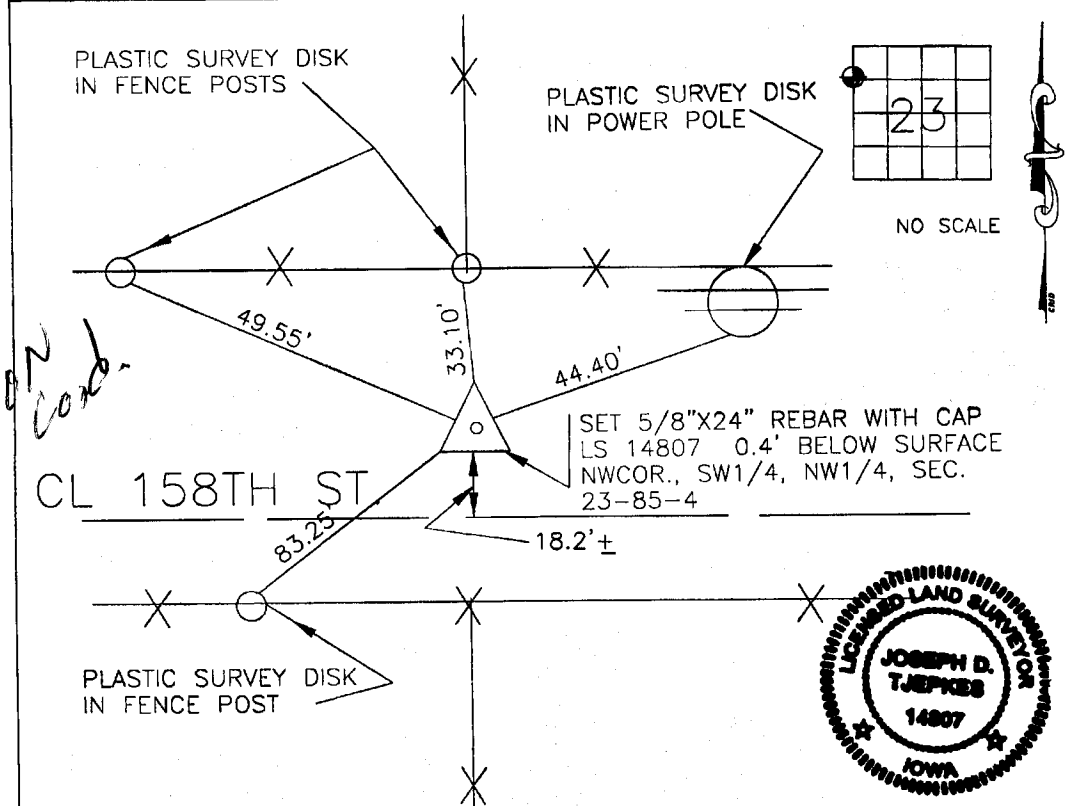
MARIE KRUTZFIELD
RECORDER NO FEE

6059

JONES COUNTY ENGINEER, 19501 HWY. 64, ANAMOSA, IOWA

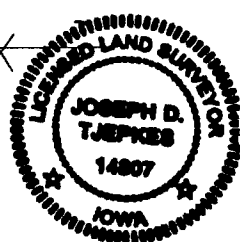
UNITED STATES PUBLIC LAND SURVEY CORNER CERTIFICATE

LAND SURVEY MONUMENTS SITUATED IN SECTION 23 TOWNSHIP 85
NORTH, RANGE 4 WEST OF THE 5TH P.M., JONES COUNTY, IOWA



ON Cont.

85422j-012500



PREVIOUSLY RECORDED IN BOOK N/A, PAGE N/A
 MONUMENT DESCRIPTION AND HOW ESTABLISHED HALL & HALL
PIN AND CAP ALONG WITH REFERENCE TIES DESTROYED DURING ROAD
CONSTRUCTION. REMONUMENTED WITH 5/8"X24" REBAR WITH YELLOW PLASTIC
CAP LS 14807 PER HALL & HALL ACQUISITION PLAT (PARCEL NO. 98-128)
SET NEW REFERENCE TIES AS INDICATED ABOVE.

I hereby declare that this plat, survey or report was made by me or under my direct personal supervision and that I am a duly registered Land Surveyor under the laws of the State of Iowa.

Signed: *[Signature]* 1-25-2000

Joseph D. Tjepkes L.S. Iowa Reg. No. 14807
 My Registration Renewal Date is December 31, 2000

CORNERS TO BE INDEXED

CORNER	SECTION	TOWNSHIP	RANGE
NWCOR.	23	85N	4W
SW1/4			
NW1/4			

JONES COUNTY ENGINEER
 19501 HWY. 64,
 ANAMOSA, IOWA

1999 3212
FILED
RECORDERS OFFICE
JONES COUNTY IOWA

99 SEP -8 AM 10: 52

MARIE KRUTZFIELD
RECORDER 600 Pd

PREPARED BY HALL & HALL ENGINEERS, INC. 209 28TH STREET N.E. CEDAR RAPIDS, IOWA 52402 (319) 382-8648

SECTION CORNER CERTIFICATE
OF

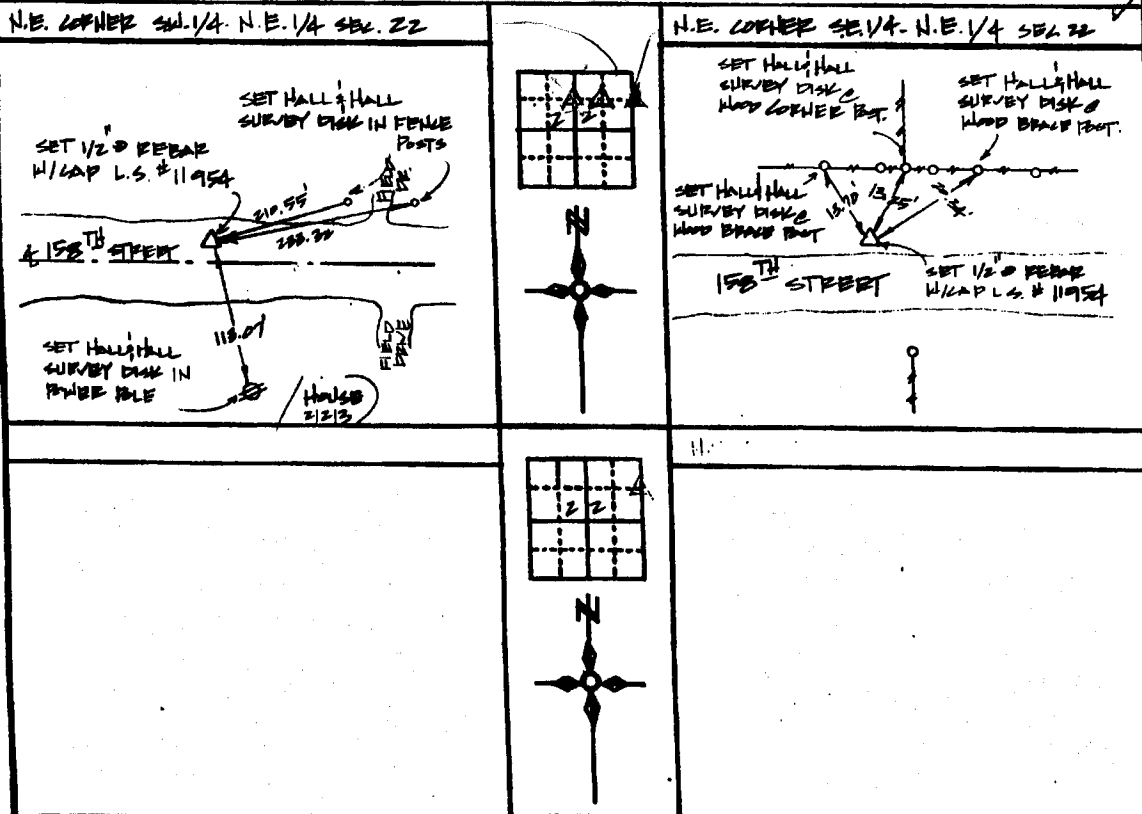
LAND SURVEY MONUMENTS SITUATED IN SECTION 22, TOWNSHIP 55 NORTH,
RANGE 4 WEST, OF THE FIFTH PRINCIPAL MERIDIAN, LOWES COUNTY, IOWA.

PREVIOUSLY RECORDED IN BOOK _____ AT PAGE _____

MONUMENT DESCRIPTION AND REMARKS:

N.E. CORNER S.W. 1/4 - N.E. 1/4 SET 1/2" PEBBLE W/ CAP L.S. # 11954
N.E. CORNER S.E. 1/4 - N.E. 1/4 SET 1/2" PEBBLE W/ CAP L.S. # 11954

RECOVERY TIE DRAWING



85422i - 090899
85422j - 090899



I hereby certify that this land surveying document was prepared and the related survey work was performed by me or under my direct personal supervision and that I am a duly Licensed Land Surveyor under the laws of the State of Iowa.

Signature: *Donald J. Johnson* Date: 9-8-99
Donald J. Johnson, L.S. # 11954
My license renewed date is December 31, 2000

Pages or sheets covered by this seal
(Entire submission unless specified here)

REASON FOR PREPARING CERTIFICATE

- A) THERE IS NO CERTIFICATE FOR THE CORNER ON FILE WITH THE RECORDER OF THE COUNTY IN WHICH THE CORNER IS LOCATED
- B) CORNER POSITION DIFFERS FROM THAT SHOWN IN THE PUBLIC RECORDS OF THE COUNTY IN WHICH THE CORNER IS LOCATED
- C) THE CORNER MONUMENT HAS BEEN REPLACED OR MODIFIED
- D) THE REFERENCE TIES REFERRED TO IN AN EXISTING PUBLIC RECORD ARE INCORRECT

SECTION CORNER	<input type="checkbox"/> GOVERNMENT CORNER <input type="checkbox"/> PROPERTY CORNER FOUND <input type="checkbox"/> 1/2" CAP OF L.S. CAP SET <input type="checkbox"/> EXISTING FENCE LINE <input type="checkbox"/> PROPERTY LINE	SHEET TITLE: US PUBLIC LAND SURVEY RECORD PROJECT NAME: LOWES COUNTY ACQUISITION PLATS	HALL AND HALL ENGINEERS, INC. 209 28TH STREET N.E. CEDAR RAPIDS, IOWA 52402 (319) 382-8648
	DATE: T.M.P. DRAWN BY: D.J.J. CHECKED BY: D.J.J. DATE: 12-10-98 SCALE: N.T.S.	SHEET NO: 143 TOTAL SHEETS: 1525	