

1999 3211
 FILED
 RECORDERS OFFICE
 JONES COUNTY IOWA

99 SEP -8 AM 10:51

MARIE KRUTZFIELD
 RECORDER 6:00 PM

PREPARED BY HALL & HALL ENGINEERS, INC. 209 29TH STREET N.E. CEDAR RAPIDS, IOWA 52402 (319) 362-8548
 SECTION CORNER CERTIFICATE

OF
 LAND SURVEY MONUMENTS SITUATED IN SECTION 23, TOWNSHIP 85 NORTH,
 RANGE 4 WEST, OF THE FIFTH PRINCIPAL MERIDIAN, JONES COUNTY, IOWA.

PREVIOUSLY RECORDED IN BOOK _____ AT PAGE _____

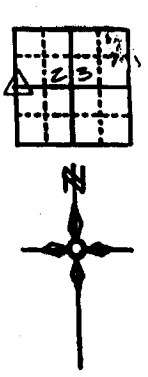
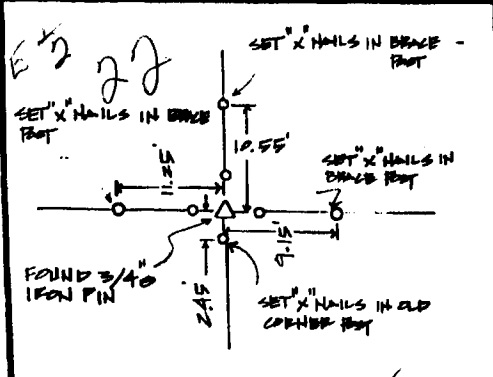
MONUMENT DESCRIPTION AND REMARKS:

W 1/4 CORNER OF SECTION 23, FOUND 3/4" IRON PIN

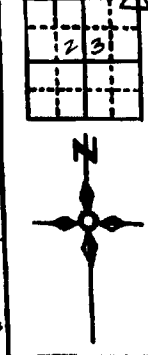
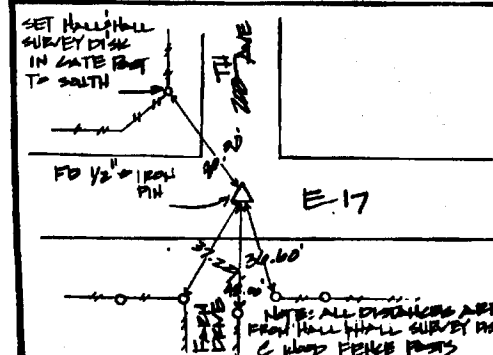
N.E. CORNER OF SECTION 23, FOUND 1/2" IRON PIN

RECOVERY TIE DRAWING

W 1/4 CORNER SEC. 23



N.E. CORNER SEC. 23



854220-090899
 85423e-090899

I hereby certify that this land surveying document was prepared and the related survey work was performed by me or under my direct personal supervision and that I am a duly licensed Land Surveyor under the laws of the State of Iowa.

Dated: 9-8-99
 Daniel J. Johnson, L.S. 11954
 My license renewal due December 31, 2000

Pages or sheets covered by this seal:
 (Enter submission unless specified here)



- REASON FOR PREPARING CERTIFICATE:
- A) THERE IS NO CERTIFICATE FOR THE CORNER ON FILE WITH THE RECORDER OF THE COUNTY IN WHICH THE CORNER IS LOCATED
 - B) CORNER POSITION DIFFERS FROM THAT SHOWN IN THE PUBLIC RECORDS OF THE COUNTY IN WHICH THE CORNER IS LOCATED
 - C) THE CORNER MONUMENT HAS BEEN REPLACED OR MODIFIED
 - D) THE REFERENCE TIES REFERRED TO IN AN EXISTING PUBLIC RECORD ARE INCORRECT

1/4 SECTION CORNER PROPERTY CORNER FOLIO 0 1/4 2307 W/ LS CAP 87 (EXISTING FENCE LINE) PROPERTY LINE	SHEET NO. <u>144</u> COUNTY <u>2</u>		HALL AND HALL ENGINEERS, INC. 209 29TH STREET N.E. CEDAR RAPIDS, IOWA 52402 (319) 362-8548
	SHEET TITLE: <u>US PUBLIC LAND SURVEY RECORD</u> PROJECT: <u>JONES COUNTY ACQUISITION PLATS</u>		
SURVEYOR: <u>T.M.R.</u>	CHECKED: <u>D.J.J.</u>	DATE: <u>12/19/98</u>	SCALE: <u>NTS</u>