

Number: 2026-1436
 Recorded: 5/14/2026 at 11:57:51.0 AM
 County Recording Fee: \$7.00
 Iowa E-Filing Fee: \$3.13
 Combined Fee: \$10.13
 Revenue Tax:
 Sheri L. Jones RECORDER
 Jones County, Iowa

PREPARED BY & RETURN TO: MICHAEL A. BROONER CIVIL DESIGN ADVANTAGE
 4121 NW URBANDALE DRIVE URBANDALE, IOWA 50322 PH: 515-369-4400 FAX: 515-369-4410

UNITED STATES PUBLIC LAND SURVEY CORNER CERTIFICATE OF

Land Survey Monuments situated in Section 27, Township 85N, Range 04W, of the
 Fifth Principal Meridian, JONES County, Iowa.

Previously recorded in COUNTY ENGINEERS TIES 1489 in County Recorder's Office.

Monument Description and Remarks:

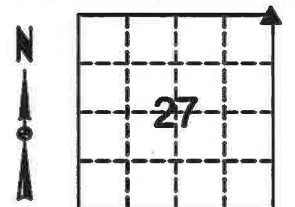
- THERE IS NO CERTIFICATE FOR THE CORNER ON FILE WITH THE RECORDER OF THE COUNTY IN WHICH THE CORNER IS LOCATED.
- THE SURVEYOR IN RESPONSIBLE CHARGE OF THE LAND SURVEYING ACCEPTS A CORNER POSITION WHICH DIFFERS FROM THAT SHOWN IN THE PUBLIC RECORDS OF THE COUNTY IN WHICH THE CORNER IS LOCATED.
- THE CORNER MONUMENT IS REPLACED OR MODIFIED IN ANY WAY.
- THE REFERENCE TIES IN AN EXISTING PUBLIC RECORD ARE INCORRECT OR MISSING.

NE CORNER SECTION 27-85-04. PREVIOUS CORNER TIE PROVIDED BY COUNTY ENGINEER STATES THAT A CONCRETE MONUMENT WAS SET 12' BELOW SURFACE AND ABOVE A STONE. THE STONE WAS GENERALLY 20' NORTH AND SOUTH OF FENCES FOR FORMER ROAD RIGHT OF WAY. WM BURGER USED CONCRETE MONUMENT FOR PLAT OF SURVEY RECORDED AS INSTRUMENT 2018-1843. BURGER PROVIDED THIS SURVEYOR WITH AN UNRECORDED CORNER CERTIFICATE. THIS SURVEYOR FOUND STONE AT SURFACE USING RECORD DISTANCES FROM SAID PLAT OF SURVEY AND FROM UNRECORDED CORNER CERTIFICATE TIES. SET ADDITIONAL TIES AND USED FOR PLAT OF SURVEY.

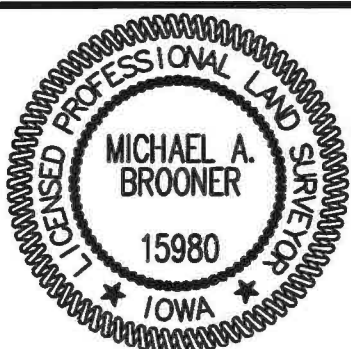
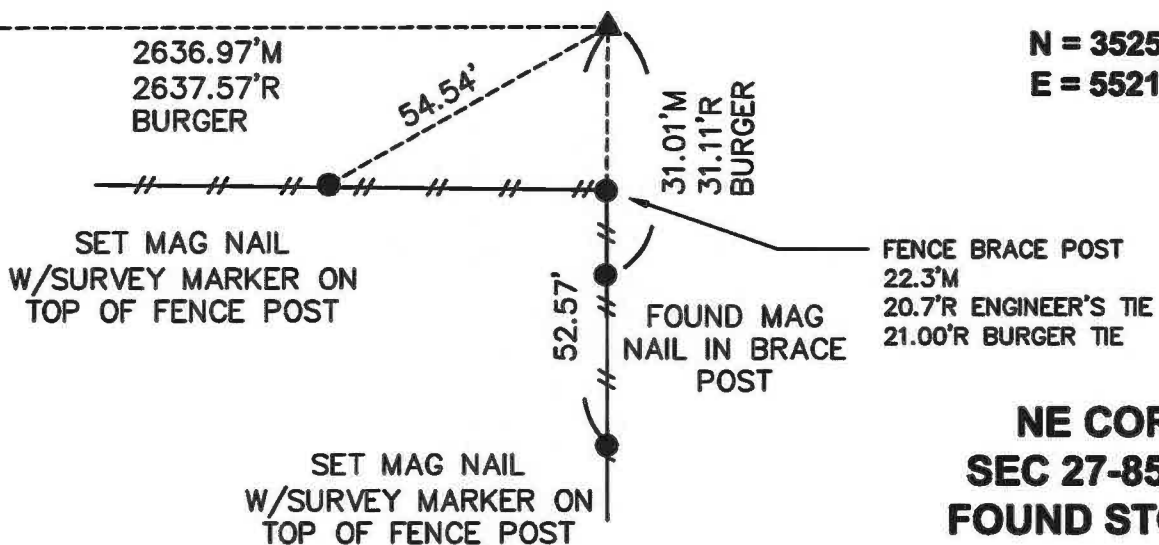
PLAN VIEW

(Show a minimum of three reference ties to durable physical objects, relevant monuments and physical conditions that will enable recovery of the corner.)

N1/4 COR SEC 27-85-04
 FND 1/2" REBAR
 W/YELLOW CAP #12642



N = 3525872.29
E = 5521232.02



I HEREBY CERTIFY THAT THIS LAND SURVEYING DOCUMENT WAS PREPARED AND THE RELATED SURVEYING WORK WAS PERFORMED BY ME OR UNDER MY DIRECT SUPERVISION AND THAT I AM A DULY LICENSED LAND SURVEYOR UNDER THE LAWS OF THE STATE OF IOWA.

Michael Brooner 5-11-2026
 MICHAEL A. BROONER, P.L.S. DATE
 LICENSE NUMBER 15980
 MY LICENSE RENEWAL DATE IS DECEMBER 31, 2026.
 CERTIFICATION COVERS THIS SHEET ONLY:

List Corners to be Indexed			
Corners	Section	Twp	Range
NE COR	27	85	04
NW COR	26	85	04
SE COR	22	85	04
SW COR	23	85	04

Tech: EMG PN:2508.665 Date: 10-08-2025

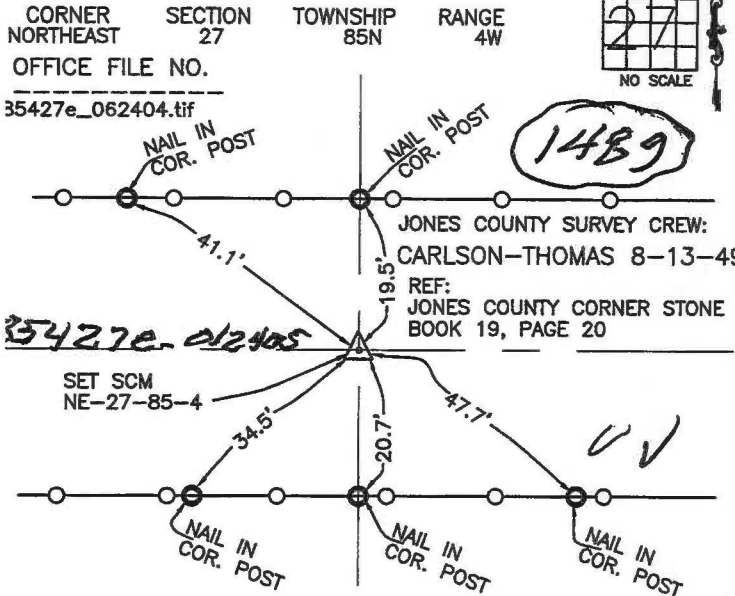
THIS IS NOT A CERTIFICATION

JONES COUNTY ENGINEER'S OFFICE, 19501 HWY. 64, ANAMOSA, IOWA, 52205 (319)462-3785

UNITED STATES PUBLIC LAND SURVEY CORNER CERTIFICATE

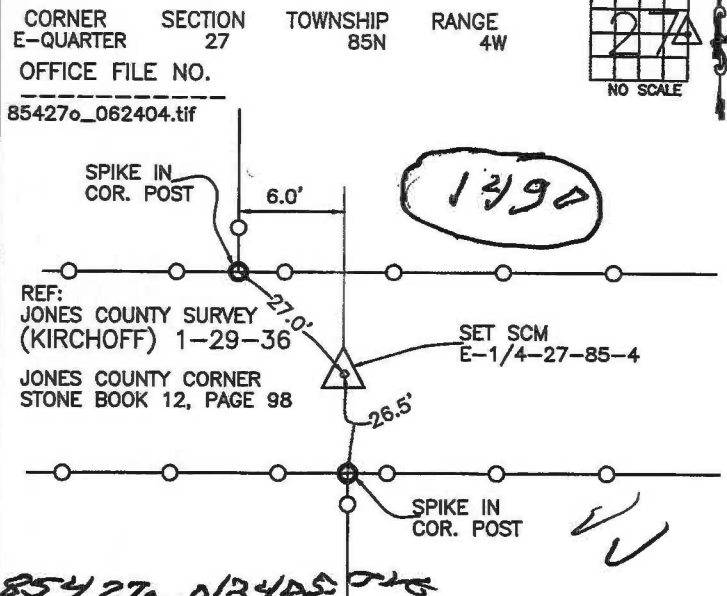
LAND SURVEY MONUMENTS SITUATED IN SECTION 27, TOWNSHIP 85
NORTH, RANGE 4 WEST OF THE 5TH P.M., JONES COUNTY, IOWA

CORNERS TO BE INDEXED



PREVIOUSLY RECORDED IN BOOK _____, PAGE _____
MONUMENT DESCRIPTION AND HOW ESTABLISHED FOUND
ORIGINAL CORNER STONE, SET STANDARD CONCRETE MONUMENT
ABOVE WITH TOP 12" BELOW SURFACE. TIES AS INDICATED. NORTHEAST
CORNER SECTION 27, TOWNSHIP 85 NORTH, RANGE 4 WEST OF THE 5TH
PRINCIPAL MERIDIAN, JONES COUNTY, IOWA.

CORNERS TO BE INDEXED



PREVIOUSLY RECORDED IN BOOK _____, PAGE _____
MONUMENT DESCRIPTION AND HOW ESTABLISHED FOUND
LIMESTONE BELOW ROAD SURFACE. SET STANDARD CONCRETE
MONUMENT ABOVE WITH TOP 6" BELOW ROAD. TIES AS INDICATED.
EAST QUARTER CORNER SECTION 27, TOWNSHIP 85 NORTH, RANGE 4
WEST OF THE 5TH PRINCIPAL MERIDIAN, JONES COUNTY, IOWA.

CORNERS TO BE INDEXED

CORNER	SECTION	TOWNSHIP	RANGE
OFFICE FILE NO.			

NO SCALE

PREVIOUSLY RECORDED IN BOOK _____, PAGE _____
MONUMENT DESCRIPTION AND HOW ESTABLISHED _____

CORNERS TO BE INDEXED

CORNER	SECTION	TOWNSHIP	RANGE
OFFICE FILE NO.			

NO SCALE

PREVIOUSLY RECORDED IN BOOK _____, PAGE _____
MONUMENT DESCRIPTION AND HOW ESTABLISHED _____

~~I hereby declare that this plat, survey or report was made by me or under my direct personal supervision and that I am a duly registered Land Surveyor under the laws of the State of Iowa.~~

Signed: _____

SEAL

JONES COUNTY ENGINEER'S OFFICE

19501 HWY. 64,
ANAMOSA, IOWA,
52205 (319)462-3785