

Instrument #: 2022-3030
 10/24/2022 09:05:49 AM Total Pages: 1
 ZSC SECTION CORNER CERTIFICATE
 Recording Fee: \$7.00 Transfer Tax: \$0
 Sheri L. Jones, Recorder, Jones County Iowa



PREPARED BY: SCOTT SURVEY, INC. P.O. BOX 315 CENTER POINT IOWA 52213 319-540-5263

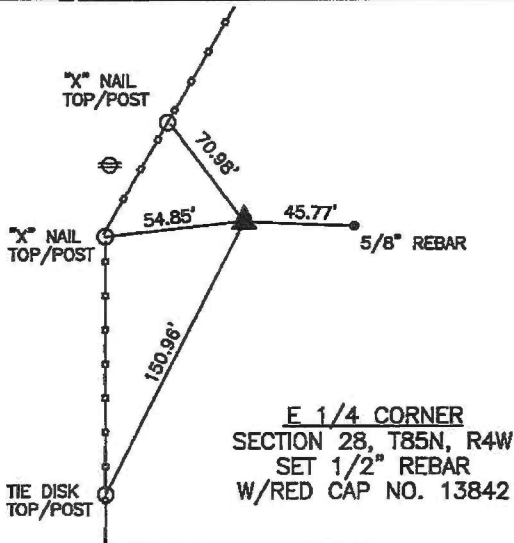
U.S. PUBLIC LAND SURVEY CORNER CERTIFICATE

FOR LAND SURVEY MONUMENTS SITUATED IN SECTION 28, TOWNSHIP 85 NORTH, RANGE 4 WEST, OF THE FIFTH PRINCIPAL MERIDIAN, JONES COUNTY, IOWA

REASON FOR PREPARING CERTIFICATE:

- A) THERE IS NO CERTIFICATE FOR THE CORNER ON FILE WITH THE RECORDER.
 B) CORNER TIES DIFFER FROM PREVIOUSLY RECORDED CERTIFICATE.

RECOVERY TIE DRAWING



LOCATION



E 1/4 CORNER
 SECTION 28, T85N, R4W
 SET 1/2" REBAR
 W/RED CAP NO. 13842

MONUMENT DESCRIPTION AND REMARKS :

SET MONUMENT ACCORDING PLAT BOOK K, PAGE 14, OFFICE OF THE RECORDER, JONES COUNTY, IOWA.

MONUMENT DESCRIPTION AND REMARKS :



I hereby certify that this land surveying document was prepared and the related survey work was performed by me or under my direct personal supervision and that I am a duly licensed Professional Land Surveyor under the laws of the State of Iowa.

Stephen M. Scott, 2022
 STEPHEN M. SCOTT, P.L.S. Iowa Lic. No. 13842

My license renewal date is December 31, 2022

- GOVERNMENT CORNER
- 1/2" TIE PIN SET
- CENTERLINE
- EXISTING FENCE LINE
- R.O.W. LINE

U.S. PUBLIC LAND SURVEY CORNER CERTIFICATE

SECTION 28, T85N, R4W
 E 1/4 CORNER

PROJECT NO.
 21101201