

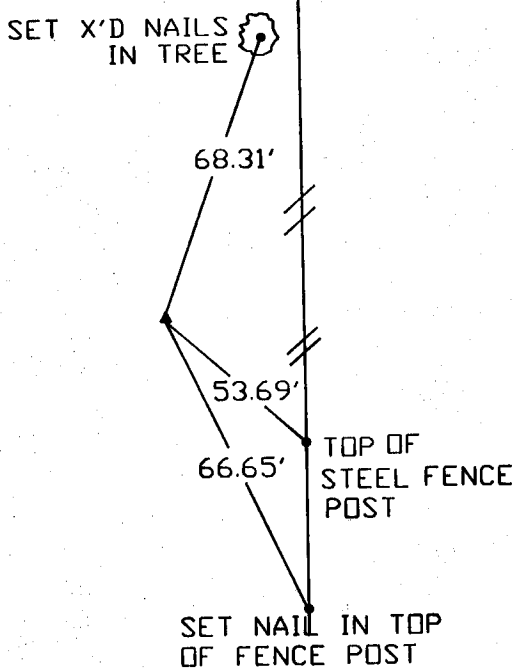
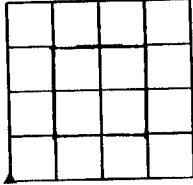
UNITED STATES PUBLIC LAND SURVEY CORNER CERTIFICATE

LAND SURVEY MONUMENTS SITUATED IN SECTION 21, TOWNSHIP 85 NORTH
RANGE 4 WEST OF THE 5TH P.M., JONES COUNTY, IOWA.

NO SCALE



SW CORNER



PREVIOUSLY RECORDED IN BOOK _____ PAGE _____

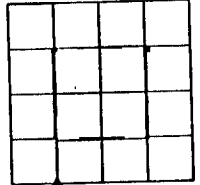
MONUMENT DESCRIPTION AND HOW ESTABLISHED _____

SET 1/2" REBAR WITH CAP #11310 ON LINE BETWEEN 3/8' REBAR PREVIOUSLY CALLED OUT AS SW CORNER SECTION 21 AND W 1/4 CORNER SECTION 21 AT PROPORTIONATE DISTANCE.

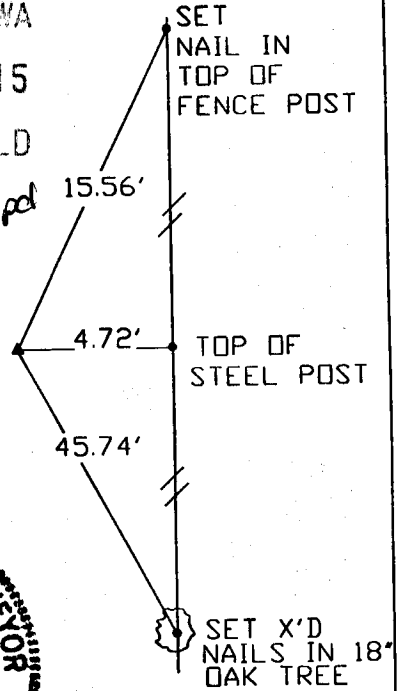
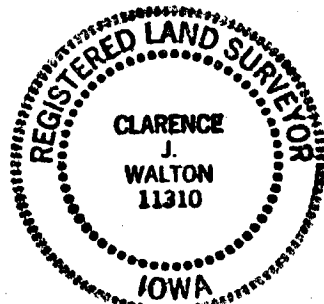
NO SCALE



SE CORNER
SW 1/4 SW 1/4



1999 0732
FILED
RECORDERS OFFICE
JONES COUNTY IOWA
99 FEB 26 AM 10:15
MARIE KRUTZFIELD
RECORDER
6.00 pd



PREVIOUSLY RECORDED IN BOOK _____ PAGE _____

MONUMENT DESCRIPTION AND HOW ESTABLISHED _____

SET 1/2" REBAR WITH CAP #11310 AT MID-POINT OF SOUTH LINE OF SW 1/4 SECTION 21

CORNERS TO BE INDEXED

CORNER	SECTION	TOWNSHIP	RANGE
SW CORNER	21	T85N	R4W
SE CORNER	21	T85N	R4W

BRAIN ENGINEERING, INC.

777 10TH STREET
MARION, IOWA 52302
(319) 373-1318

I hereby declare that this plat, survey or report was made by me or under my direct personal supervision and that I am a duly registered Land Surveyor under the laws of the State of Iowa.

Signed Clarence J. Walton Date 2/25/99
Clarence J. Walton L.S. Iowa Reg No. 11310
My Registration Renewal Date Is December 31, 1999

23599-10