

Marie Krutzfield, Recorder
 Jones County, Iowa

CLARENCE J. WALTON, L.S. JONES COUNTY ENGINEER'S OFFICE, 19501 HWY. 64, ANAMOSA, IOWA, 52205 (319)462-3785

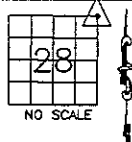
UNITED STATES PUBLIC LAND SURVEY CORNER CERTIFICATE

LAND SURVEY MONUMENTS SITUATED IN SECTION 28, TOWNSHIP 85
 NORTH, RANGE 4 WEST OF THE 5TH P.M., JONES COUNTY, IOWA

CORNERS TO BE INDEXED

CORNER	SECTION	TOWNSHIP	RANGE
NE COR.	28	85N	4W

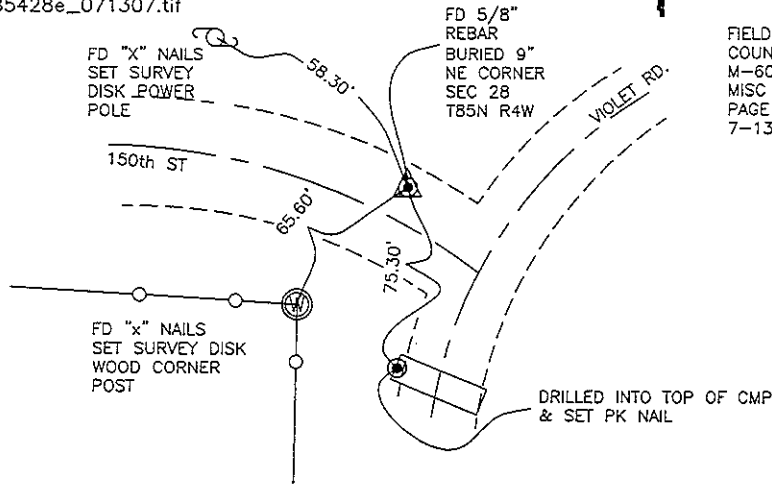
OFFICE FILE NO.
 85428e_071307.tif



STATE PLANE COORDINATE
 NAD 83 IOWA NORTH
 N 3525670.03
 E 5515990.37

NOTE: THE STATE PLANE COORDINATE AS INDICATED IS FOR CONVENIENCE ONLY. THE TIES AS SHOWN SHOULD BE USED TO REPLACE THE CORNER, IF DESTROYED

FIELD NOTES:
 COUNTY PROJECT NO.
 M-607
 MISC BOOK 2006
 PAGE 75
 7-13-2007



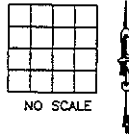
PREVIOUSLY RECORDED IN BOOK 1999, PAGE 0734
 MONUMENT DESCRIPTION AND HOW ESTABLISHED _____

SOME OF THE RECORD TIES WERE REMOVED DURING CONSTRUCTION.
 FOUND 5/8" REBAR BURIED 9" AFTER GRADING COMPLETED.
 NEW TIES AS INDICATED FOR NE CORNER SECTION 28 T85N R4W.

CORNERS TO BE INDEXED

CORNER	SECTION	TOWNSHIP	RANGE

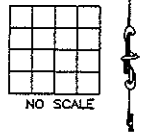
OFFICE FILE NO. _____



CORNERS TO BE INDEXED

CORNER	SECTION	TOWNSHIP	RANGE

OFFICE FILE NO. _____

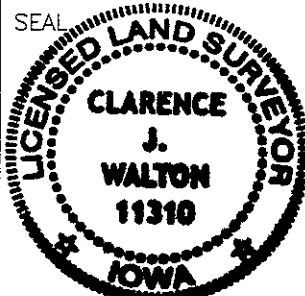


PREVIOUSLY RECORDED IN BOOK _____, PAGE _____
 MONUMENT DESCRIPTION AND HOW ESTABLISHED _____

PREVIOUSLY RECORDED IN BOOK _____, PAGE _____
 MONUMENT DESCRIPTION AND HOW ESTABLISHED _____

I hereby declare that this plat, survey or report was made by me or under my direct personal supervision and that I am a duly registered Land Surveyor under the laws of the State of Iowa.

Signed: Clarence J. Walton 7/27/07



CLARENCE J. WALTON
 LS 11310
 JONES COUNTY
 ENGINEER'S OFFICE

19501 HWY. 64,
 ANAMOSA, IOWA,
 52205 (319)462-3785

CLARENCE J. WALTON L.S. IOWA REG. NO. 11310
 My Registration Renewal Date is December 31, 2007

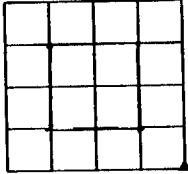
UNITED STATES PUBLIC LAND SURVEY CORNER CERTIFICATE

LAND SURVEY MONUMENTS SITUATED IN SECTION 21, TOWNSHIP 85 NORTH
RANGE 4 WEST OF THE 5TH P.M., JONES COUNTY, IOWA.

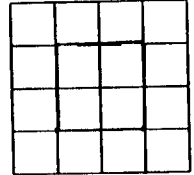
NO SCALE



SE CORNER



NO SCALE

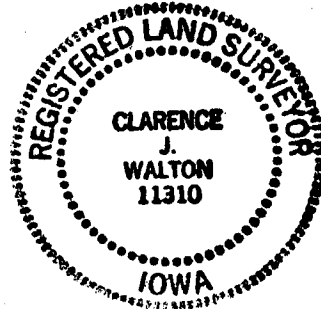
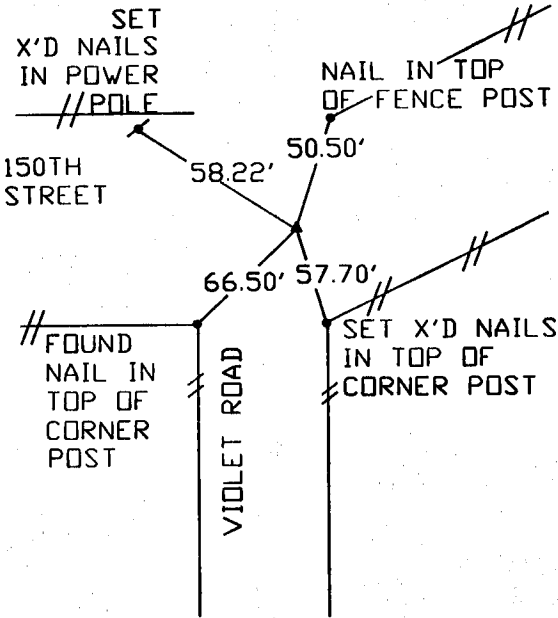


1999 0734

FILED
RECORDERS OFFICE
JONES COUNTY IOWA

99 FEB 26 AM 10:17

MARIE KRUTZFIELD
RECORDER 6.00 pd



PREVIOUSLY RECORDED IN BOOK _____ PAGE _____

MONUMENT DESCRIPTION AND HOW ESTABLISHED _____

FOUND 5/8" REBAR

PREVIOUSLY RECORDED IN BOOK _____ PAGE _____

MONUMENT DESCRIPTION AND HOW ESTABLISHED _____

I hereby declare that this plat, survey or report was made by me or under my direct personal supervision and that I am a duly registered Land Surveyor under the laws of the State of Iowa.

Signed Clarence J. Walton Date 2/25/99
Clarence J. Walton L.S. Iowa Reg. No. 11310
My Registration Renewal Date Is December 31, 1999

CORNERS TO BE INDEXED

CORNER	SECTION	TOWNSHIP	RANGE
SE CORNER	21	T85N	R4W

BRAIN ENGINEERING, INC.

777 10TH STREET
MARION, IOWA 52302
(319) 373-1318

85428e-022599

23599-10