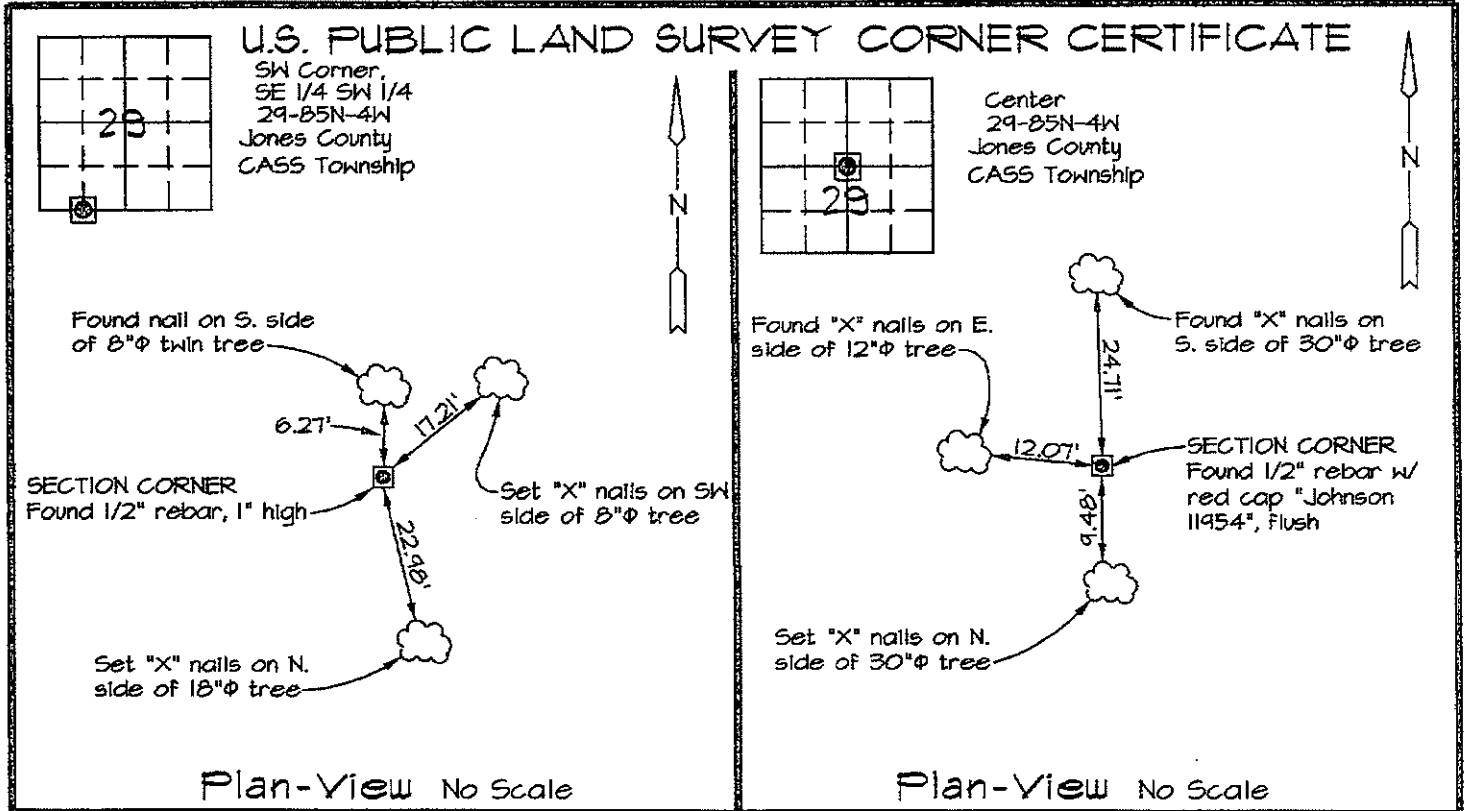


Marie Krutzfield, Recorder  
 Jones County, Iowa

Prepared by: Richard M. Kordick, P.E., L.S., 120 East Main, Suite D, Anamosa, IA 52205 Phone: (319) 462-4498

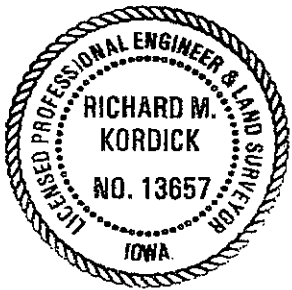


Reason for corner tie:  
 A) There is no certificate for the corner on file with the recorder.  
 B) Corner position differs from previously recorded certificate recorded in book , page  
 C) Corner monument was replaced or modified.  
 D) Reference ties in previously recorded certificate recorded in book , page are incorrect or missing.

Research at the recorder's office, auditor's office, and engineer's office revealed the following:  
 A plat in Recorder's Document No. 9798-3272 called for a "Fnd. I.P." at this corner. A plat in Recorder's Document No. 2006-1300 called for a "5/8\" rebar" at this corner.  
 A plat in Recorder's Document No. 2000-0403 called for a "set 1/2\" rebar w/ L.S. cap #11954". A plat in Recorder's Document No. 2006-1656 called for a "found rebar w/ red cap LS 11954" at this corner.

Field search performed was as follows:  
 Field search was performed with a metal detector.

Monument found or set:  
 A 1/2\" rebar was found and used as the corner.



I hereby certify that this land surveying document was prepared and the related survey work was performed by me or under my direct personal supervision and that I am a duly licensed Land Surveyor under the laws of the State of Iowa.  
*Richard M. Kordick* 5/30/2008  
 Richard M. Kordick date  
 License number 13657  
 My license renewal date is December 31, 2009.  
 Pages or sheets covered by this seal: 1 of 1

**LEGEND:**  
 Section Corner as noted  
 Power Pole  
 Section line  
 Centerline  
 Existing Fence  
 Recorded Dist.

**Kordick Surveying & Engineering**  
 120 East Main, Suite D  
 Anamosa, Iowa 52205  
 (319) 462-4498

U.S. Public Land  
**Survey Corner Certificate**  
 Project: Plat of Survey - RETRACEMENT  
 Proprietor: Jesse A. Carlson and  
 Patience L. Iben

Field BK  
 OT015  
 Date  
 5-30-08  
 Job No.  
 OT015  
 Sheet  
 1 of 1