

Instrument #: 2022-3029  
 10/24/2022 09:05:49 AM Total Pages: 1  
 ZSC SECTION CORNER CERTIFICATE  
 Recording Fee: \$7.00 Transfer Tax: \$0  
 Sheri L. Jones, Recorder, Jones County Iowa



PREPARED BY: SCOTT SURVEY, INC. P.O. BOX 315 CENTER POINT IOWA 52213 319-540-5263

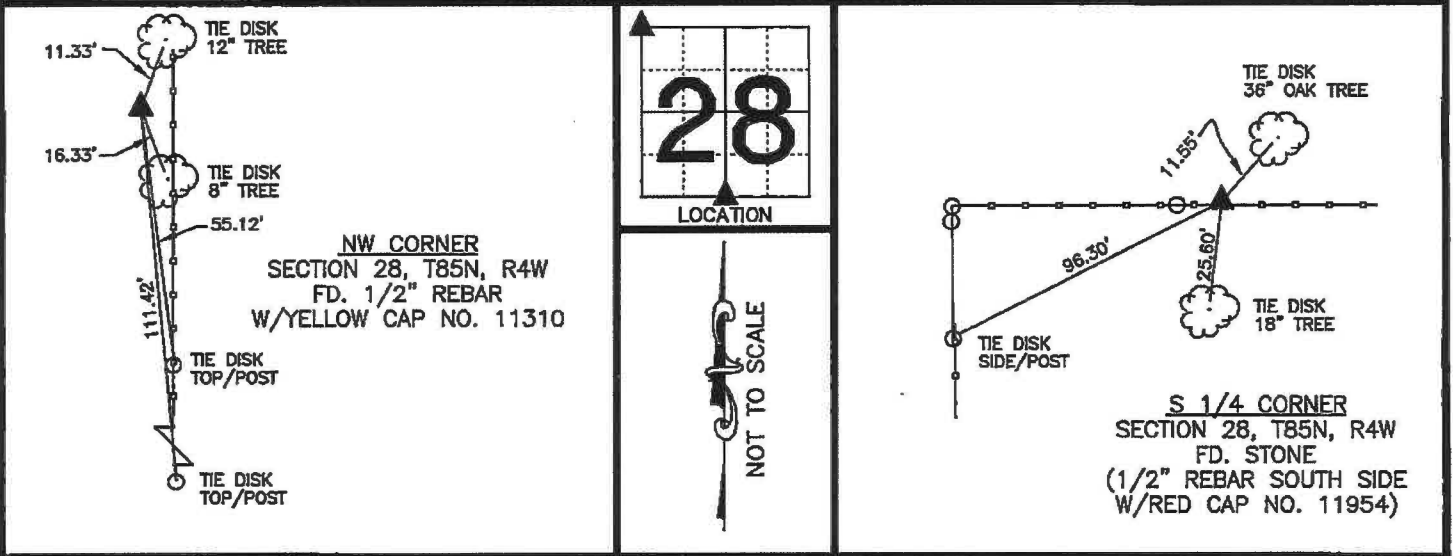
# U.S. PUBLIC LAND SURVEY CORNER CERTIFICATE

FOR LAND SURVEY MONUMENTS SITUATED IN SECTION 28, TOWNSHIP 85 NORTH, RANGE 4 WEST, OF THE FIFTH PRINCIPAL MERIDIAN, JONES COUNTY, IOWA

**REASON FOR PREPARING CERTIFICATE:**

- A) THERE IS NO CERTIFICATE FOR THE CORNER ON FILE WITH THE RECORDER.
- B) CORNER TIES DIFFER FROM PREVIOUSLY RECORDED CERTIFICATE.

## RECOVERY TIE DRAWING



**MONUMENT DESCRIPTION AND REMARKS :**

FOUND MONUMENT ACCORDING PLAT BOOK N, PAGE 54 AND ACCORDING TO PREVIOUSLY RECORDED CORNER CERTIFICATE FOUND IN FEE BOOK 1999 0732 THE OFFICE OF THE RECORDER, JONES COUNTY, IOWA.

**MONUMENT DESCRIPTION AND REMARKS :**

FOUND MONUMENT ACCORDING TO PREVIOUSLY RECORDED CORNER CERTIFICATE FOUND AT BOOK 313, PAGE 107, OFFICE OF THE RECORDER, JONES COUNTY, IOWA.



I hereby certify that this land surveying document was prepared and the related survey work was performed by me or under my direct personal supervision and that I am a duly licensed Professional Land Surveyor under the laws of the State of Iowa.

*Stephen M. Scott*  
 \_\_\_\_\_, 2022  
 STEPHEN M. SCOTT, P.L.S. Iowa Lic. No. 13842

My license renewal date is December 31, 2022

- △ GOVERNMENT CORNER
- 1/2" TIE PIN SET
- CENTERLINE
- - - EXISTING FENCE LINE
- R.O.W. LINE

**U.S. PUBLIC LAND SURVEY CORNER CERTIFICATE**

SECTION 28, T85N, R4W  
 NW CORNER  
 S 1/4 CORNER

PROJECT NO.  
 21101201

BRAIN ENGINEERING, INC., 777 10TH STREET, MARION, IOWA 52302 PH. (319) 373-1318

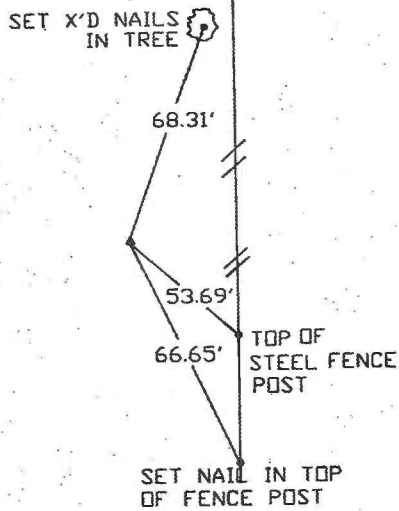
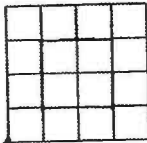
## UNITED STATES PUBLIC LAND SURVEY CORNER CERTIFICATE

LAND SURVEY MONUMENTS SITUATED IN SECTION 21, TOWNSHIP 85 NORTH  
RANGE 4 WEST OF THE 5TH P.M., JONES COUNTY, IOWA.

NO SCALE



SW CORNER



PREVIOUSLY RECORDED IN BOOK \_\_\_\_\_ PAGE \_\_\_\_\_

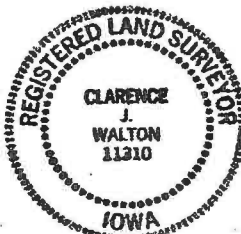
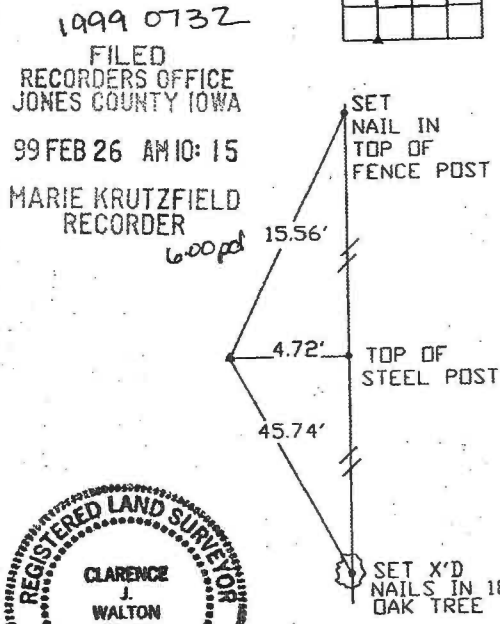
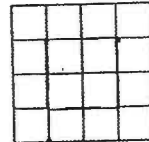
MONUMENT DESCRIPTION AND HOW ESTABLISHED \_\_\_\_\_

SET 1/2" REBAR WITH CAP #11310 ON LINE BETWEEN 3/8" REBAR PREVIOUSLY CALLED OUT AS SW CORNER SECTION 21 AND W 1/4 CORNER SECTION 21 AT PROPORTIONATE DISTANCE.

NO SCALE



SE CORNER  
SW 1/4 SW 1/4



PREVIOUSLY RECORDED IN BOOK \_\_\_\_\_ PAGE \_\_\_\_\_

MONUMENT DESCRIPTION AND HOW ESTABLISHED \_\_\_\_\_

SET 1/2" REBAR WITH CAP #11310 AT MID-POINT OF SOUTH LINE OF SW 1/4 SECTION 21

I hereby declare that this plat, survey or report was made by me or under my direct personal supervision and that I am a duly registered Land Surveyor under the laws of the State of Iowa.

Signed Clarence J. Walton Date 2/25/99

Clarence J. Walton L.S. Iowa Reg No. 11310  
My Registration Renewal Date is December 31, 1999

CORNERS TO BE INDEXED

CORNER	SECTION	TOWNSHIP	RANGE
SW CORNER	21	T85N	R4W
SE CORNER	21	T85N	RAW

**BRAIN ENGINEERING, INC.**

777 10TH STREET  
MARION, IOWA 52302  
(319) 373-1318

23599-10

7.10  
SLSI 9-94

# UNITED STATES PUBLIC LAND SURVEY CORNER CERTIFICATE

OF

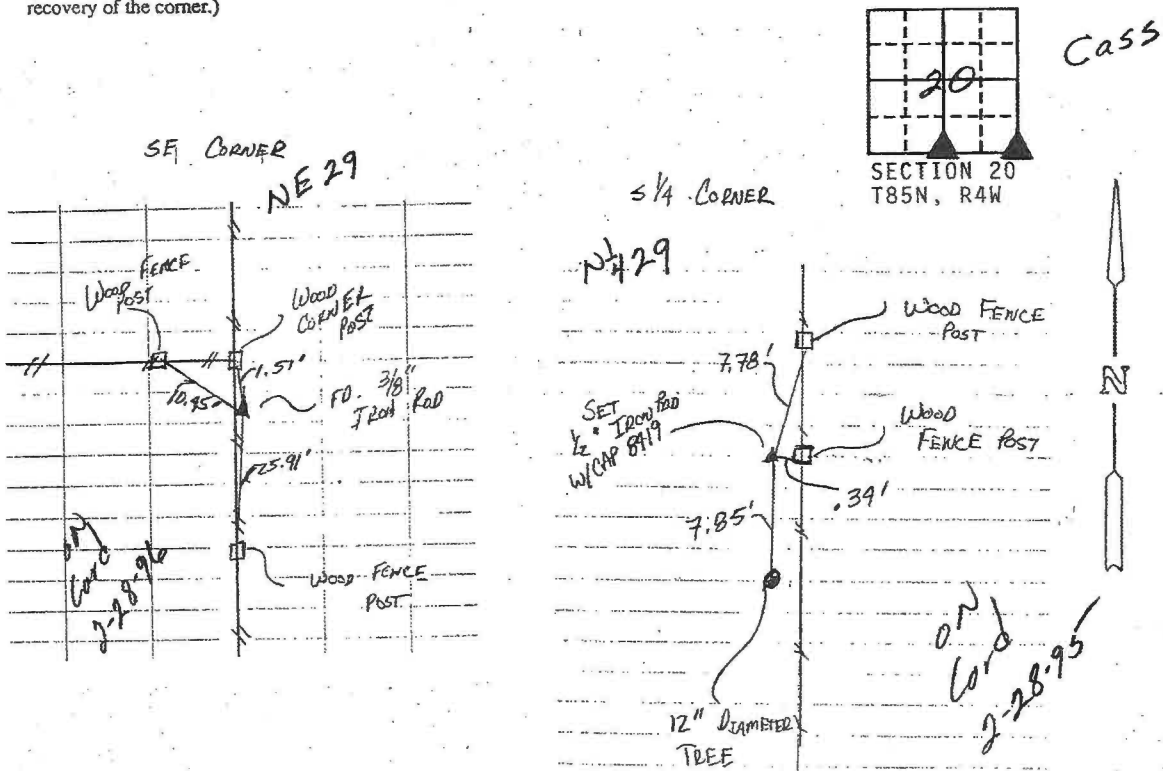
Land Survey Monuments situated in Section 20, Township 85 North, Range Four (4) West, of the Fifth Principal Meridian, Jones County, Iowa. Previously recorded in \_\_\_\_\_ in County Recorder's Office.

(book, page, document number, etc.)  
(Show reason for preparing this certificate, the evidence and detailed procedures used in establishing the corner positions and monumentation found or placed.)

Monument Description and Remarks: No certificate of record. Found iron rod at SE Corner. Set iron rod at S 1/4 Corner in line with North/South fenceline at wood corner post.

## PLAN - VIEW

(Show a minimum of three reference ties to durable physical objects, relevant monuments and physical conditions that will enable recovery of the corner.)



DATE OF FIELD WORK: 7/20/95

TSE NO: 95-34

I hereby certify that the survey work was completed and this land surveying document was prepared by me or under my direct personal supervision and that I am a duly registered land surveyor under the laws of the state of Iowa.

Signature: J. David Gibbs

Name typed or printed: J. David Gibbs

Date: 7/31/95 Reg. No. 8419

My registration renewal date is December 1996

Corners	List Corners to be Indexed		
	Section	Twp	Range
SE	20	85N	4W
S 1/4	20	85N	4W

85429e-073195  
85429c-073195

SEAL

