

COPY

Jones County Marie Krutzfield Recorder  
Fee Book 2012 0392  
02/14/2012 @1223PM # Pages 1  
ZSC SEC COR CERT  
Total Fees: \$7.00

PREPARED BY: SCOTT SURVEY, INC. P.O. BOX 315 CENTER POINT IOWA 52213 319-540-5263

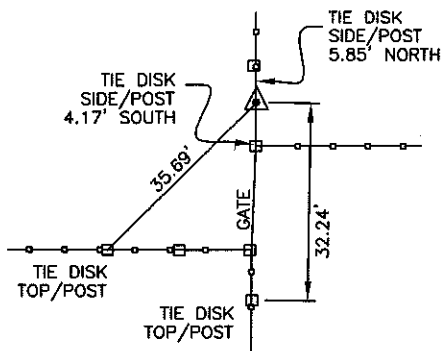
# U.S. PUBLIC LAND SURVEY CORNER CERTIFICATE

FOR LAND SURVEY MONUMENTS SITUATED IN SECTION 30, TOWNSHIP 85 NORTH, RANGE 4 WEST, OF THE FIFTH PRINCIPAL MERIDIAN, JONES COUNTY, IOWA

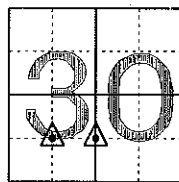
REASON FOR PREPARING CERTIFICATE:

- A) THERE IS NO CERTIFICATE FOR THE CORNER ON FILE WITH THE RECORDER.
- B) CORNER TIES DIFFER FROM PREVIOUSLY RECORDED CERTIFICATE.

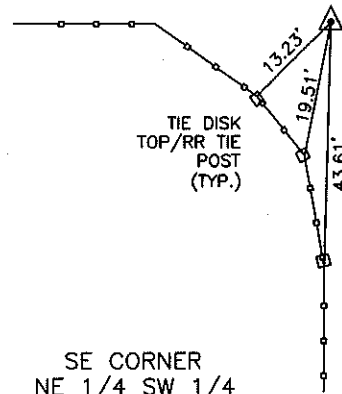
## RECOVERY TIE DRAWING



SW CORNER  
NE 1/4 SW 1/4  
SECTION 30, T85N, R4W  
SET 1/2" REBAR  
W/RED CAP NO. 13842



LOCATION



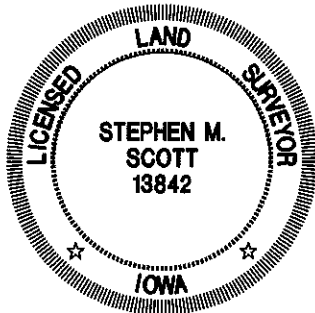
SE CORNER  
NE 1/4 SW 1/4  
SECTION 30, T85N, R4W  
SET 1/2" REBAR  
W/RED CAP NO. 13842

MONUMENT DESCRIPTION AND REMARKS :

SET MONUMENT BASED ON A SURVEY OF SECTION 30 AS SHOWN ON PLAT OF SURVEY DATED FEBRUARY 14, 2012.

MONUMENT DESCRIPTION AND REMARKS :

SET MONUMENT BASED ON A SURVEY OF SECTION 30 AS SHOWN ON PLAT OF SURVEY DATED FEBRUARY 14, 2012.



I hereby certify that this land surveying document was prepared and the related survey work was performed by me or under my direct personal supervision and that I am a duly licensed Land Surveyor under the laws of the State of Iowa.

*Stephen M. Scott*  
 \_\_\_\_\_, 2012  
 STEPHEN M. SCOTT, L.S. Iowa Lic. No. 13842

My license renewal date is December 31, 2012.

- △ GOVERNMENT CORNER
- 1/2" TIE PIN SET
- CENTERLINE
- EXISTING FENCE LINE
- R.O.W. LINE

U.S. PUBLIC LAND SURVEY CORNER CERTIFICATE

SECTION 30, T85N, R4W  
SW CORNER NE 1/4 SW 1/4  
SE CORNER NE 1/4 SW 1/4

PROJECT NO.  
1113803