

1999 3216

FILED  
RECORDERS OFFICE  
JONES COUNTY IOWA

99 SEP -8 AM 10: 56

MARIE KRUTZFIELD  
RECORDER 6.00 PD

PREPARED BY HALL & HALL ENGINEERS, INC. 209 29TH STREET N.E. CEDAR RAPIDS, IOWA 52402 (319) 382-9548  
SECTION CORNER CERTIFICATE

OF  
LAND SURVEY MONUMENTS SITUATED IN SECTION 30, TOWNSHIP 05 NORTH,  
RANGE 4 WEST, OF THE FIFTH PRINCIPAL MERIDIAN, JONES COUNTY, IOWA.

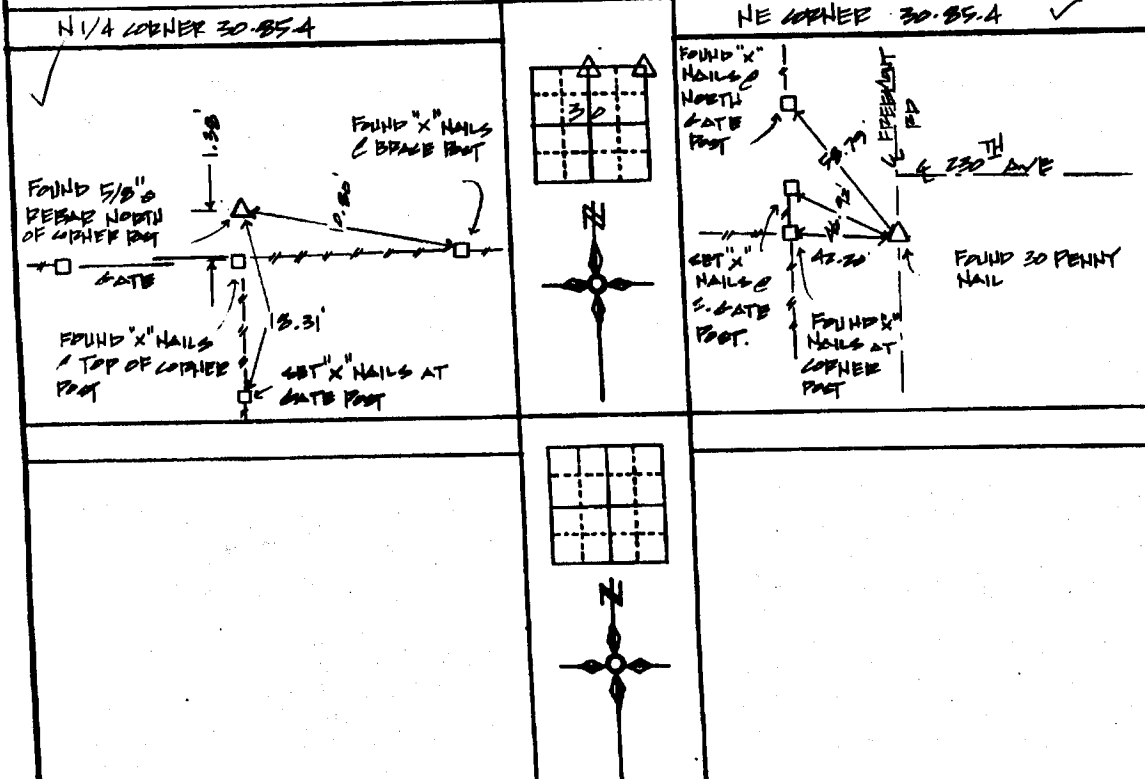
PREVIOUSLY RECORDED IN BOOK \_\_\_\_\_ AT PAGE \_\_\_\_\_

MONUMENT DESCRIPTION AND REMARKS:

N 1/4 CORNER OF SEC. 30, FOUND 5/8" PEGG NORTH OF CORNER POST

NE CORNER OF SEC. 30, FOUND 30 PENNY NAIL AT CENTERLINE OF FREEMONT ROAD

RECOVERY TIE DRAWING



I hereby certify that this land surveying document was prepared and the related survey work was performed by me or under my direct personal supervision and that I am a duly Licensed Land Surveyor under the laws of the State of Iowa.

Signed: *Daniel J. Johnson* Date: 9-8-99  
 Daniel J. Johnson, L.S. 11954  
 My license renewal date is December 31, 2002.

Pages or sheets covered by this seal:  
 (Entire submission unless specified here)

- REASON FOR PREPARING CERTIFICATE
- A) THERE IS NO CERTIFICATE FOR THE CORNER ON FILE WITH THE RECORDER OF THE COUNTY IN WHICH THE CORNER IS LOCATED
  - B) CORNER POSITION DIFFERS FROM THAT SHOWN IN THE PUBLIC RECORDS OF THE COUNTY IN WHICH THE CORNER IS LOCATED
  - C) THE CORNER MONUMENT HAS BEEN REPLACED OR MODIFIED
  - D) THE REFERENCE TIES REFERRED TO IN AN EXISTING PUBLIC RECORD ARE INCORRECT

1/2" CAP SET 1" - 1" TYPING FENCE LINE PROPERTY LINE	SHEET NO. 1 PROJECT TITLE: JONES COUNTY ACQUISITION PLAN	HALL AND HALL ENGINEERS, INC. 209 29TH STREET N.E. CEDAR RAPIDS, IOWA 52402 (319) 382-9548
	US PUBLIC LAND SURVEY RECORD	
D T.M.B C P.V.I A P.V.I B 8-10-98 E H.T.S	COUNTY JONES P 6575	

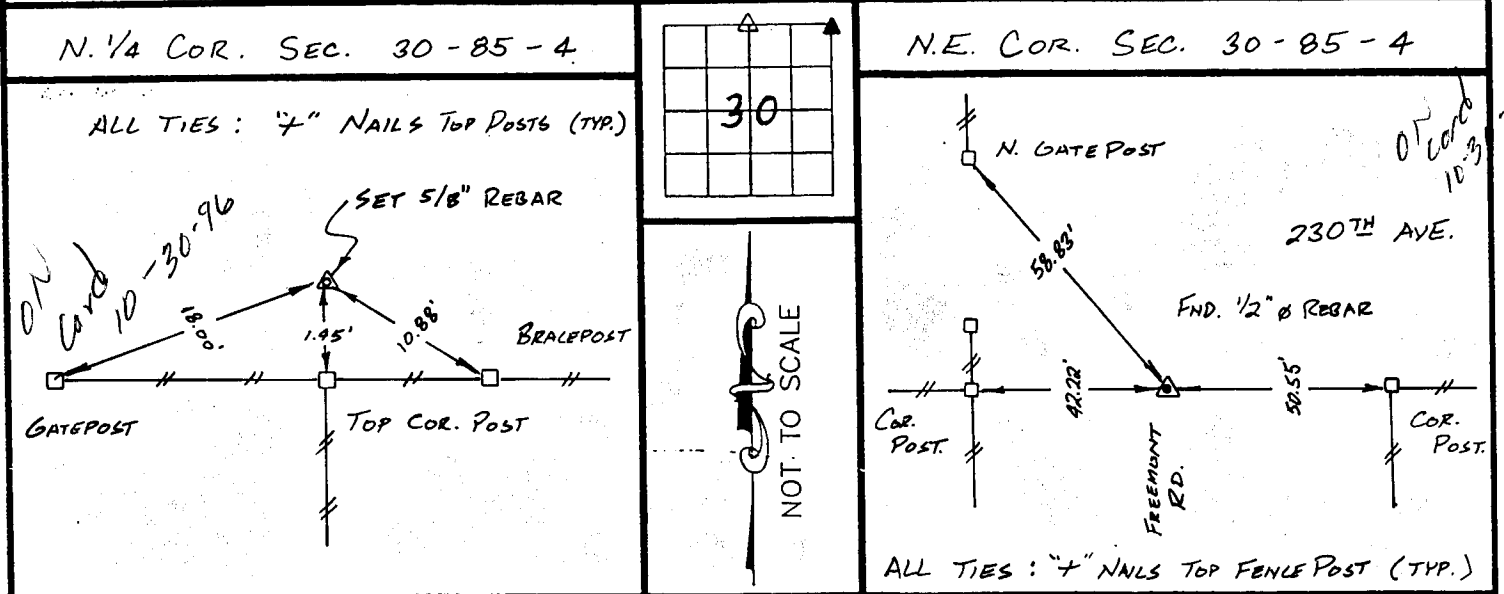
# U.S. PUBLIC LAND SURVEY CORNER CERTIFICATE

FOR LAND SURVEY MONUMENTS SITUATED IN SECTION 30, TOWNSHIP 85 NORTH, RANGE 4 WEST, OF THE FIFTH PRINCIPAL MERIDIAN, SONES, COUNTY, IOWA.

**REASON FOR PREPARING CERTIFICATE:**

- A) THERE IS NO CERTIFICATE FOR THE CORNER ON FILE WITH THE RECORDER.
- B) CORNER FOUND DIFFERS FROM PREVIOUSLY RECORDED CERTIFICATE RECORDED IN BOOK     , AT PAGE     .

## RECOVERY TIE DRAWING

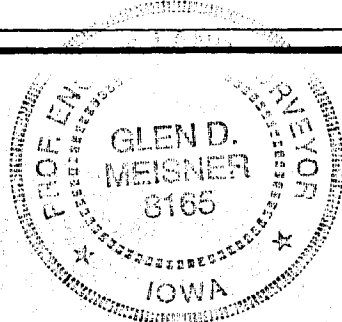


**MONUMENT DESCRIPTION AND REMARKS :**  
 SET 5/8" Ø REBAR AT DIVISION FENCE LINES.

**MONUMENT DESCRIPTION AND REMARKS :**  
 FOUND 1/2" Ø REBAR

I HEREBY CERTIFY THAT THE CORNER LOCATION(S) SHOWN ON THIS RECORD WERE DETERMINED BY ME OR UNDER MY DIRECT PERSONAL SUPERVISION AND THAT THIS U.S. PUBLIC LAND SURVEY MONUMENT RECORD IS CORRECT AND COMPLETE TO THE BEST OF MY KNOWLEDGE AND BELIEF.

Glen D. Meisner 10-27-96  
 GLEN D. MEISNER, PE & LS IA. REG. NO. 8165 DATE  
 MY BIENNIAL RENEWAL DATE IS DECEMBER 31, 1997



<p><b>LEGEND</b></p> <ul style="list-style-type: none"> <li>△ GOVERNMENT CORNER</li> <li>○ 5/8" TIE PIN SET</li> <li>— CENTERLINE</li> <li>- - - EXISTING FENCE LINE</li> <li>- - - R.O.W. LINE</li> </ul>	<p><b>SHEET TITLE:</b> U.S. PUBLIC LAND SURVEY CORNER CERTIFICATE</p> <p><b>PROJECT TITLE:</b> BETZER</p>	<p><b>MMS CONSULTANTS, INC.</b>                  Iowa City, Iowa                  319-351-8282</p>				
<p><b>NO</b> RR.V</p>	<p><b>BY</b> G.D.M.</p>	<p><b>AP</b> G.D.M.</p>	<p><b>DATE</b> 9-25-96</p>	<p><b>SCALE</b> NONE</p>	<p><b>NO</b> 342</p>	<p><b>NO</b> 3565-001</p>