



Doc ID: 014849860001 Type: GEN  
 Recorded: 04/15/2010 at 03:52:59 PM  
 Fee Amt: \$9.00 Page 1 of 1  
 Revenue Tax: \$0.00  
 Linn County Iowa  
 JOAN MCCALMANT RECORDER

BK **7574** PG **313**

PREPARED BY: SCOTT SURVEY, INC. P.O. BOX 315 CENTER POINT IOWA 52213 319-540-5263

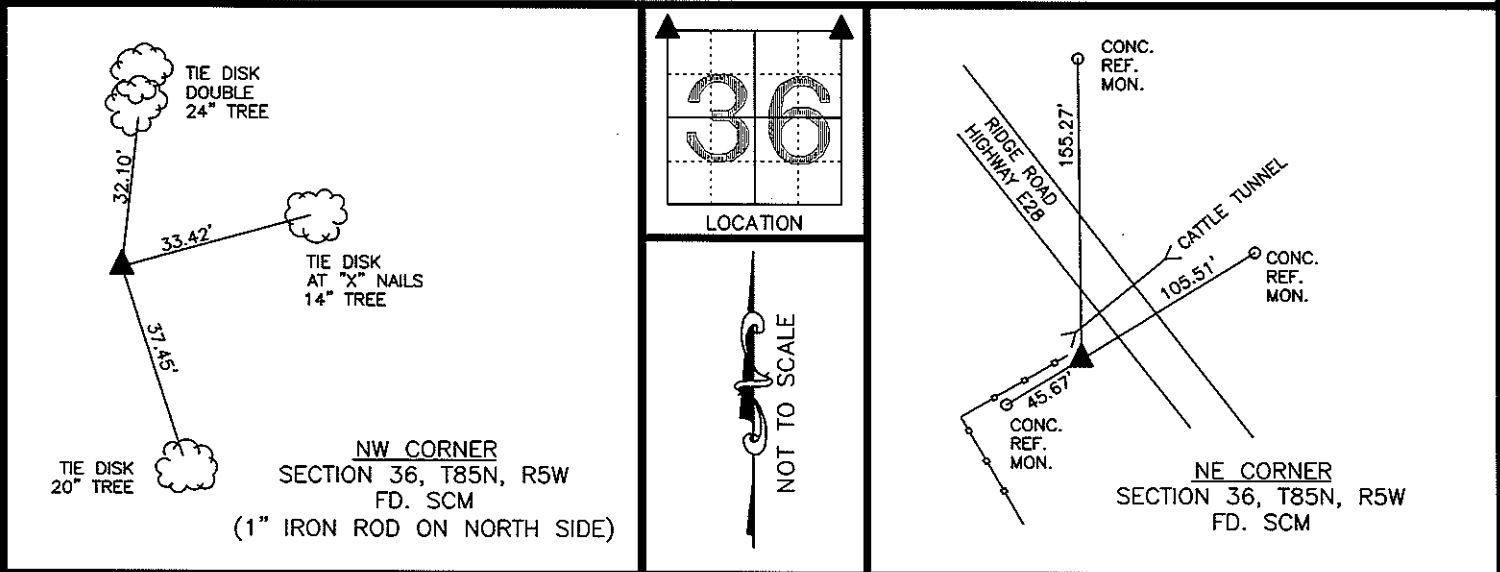
# U.S. PUBLIC LAND SURVEY CORNER CERTIFICATE

FOR LAND SURVEY MONUMENTS SITUATED IN SECTION 36, TOWNSHIP 85 NORTH, RANGE 5 WEST, OF THE FIFTH PRINCIPAL MERIDIAN, LINN COUNTY, IOWA

REASON FOR PREPARING CERTIFICATE:

- A) THERE IS NO CERTIFICATE FOR THE CORNER ON FILE WITH THE RECORDER.
- B) CORNER TIES DIFFER FROM PREVIOUSLY RECORDED CERTIFICATE.

## RECOVERY TIE DRAWING

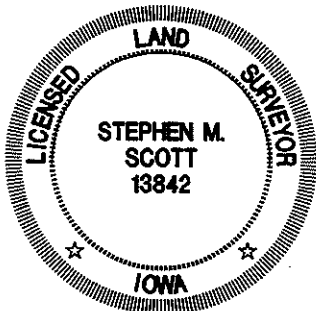


MONUMENT DESCRIPTION AND REMARKS :

FOUND MONUMENT ACCORDING TO WPA NOTES FOUND IN THE OFFICE OF THE LINN COUNTY ENGINEER.

MONUMENT DESCRIPTION AND REMARKS :

FOUND MONUMENT ACCORDING TO WPA NOTES AND CORNER TIES FOUND IN THE OFFICE OF THE LINN COUNTY ENGINEER.



I hereby certify that this land surveying document was prepared and the related survey work was performed by me or under my direct personal supervision and that I am a duly licensed Land Surveyor under the laws of the State of Iowa.

*[Signature]*  
 STEPHEN M. SCOTT, L.S. Iowa Lic. No. 13842, 2010

My license renewal date is December 31, 2010.

- △ GOVERNMENT CORNER
- 1/2" TIE PIN SET
- CENTERLINE
- EXISTING FENCE LINE
- - - R.O.W. LINE

U.S. PUBLIC LAND SURVEY CORNER CERTIFICATE

SECTION 36, T85N, R5W  
 NW CORNER  
 NE CORNER

PROJECT NO.  
 1013801