

Marie Krutzfield, Recorder
 Jones County, Iowa

Prepared by Wm. Burger LandSurveyor 510 3rd Street West Court, Worthington, Iowa Phone 563 - 855 2028

UNITED STATES PUBLIC LAND SURVEY CORNER CERTIFICATE

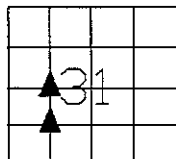
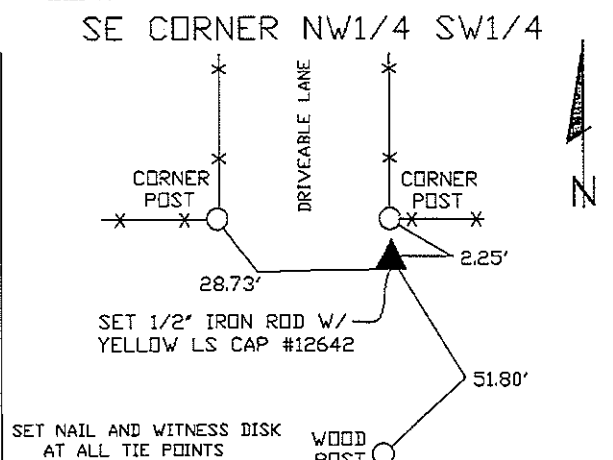
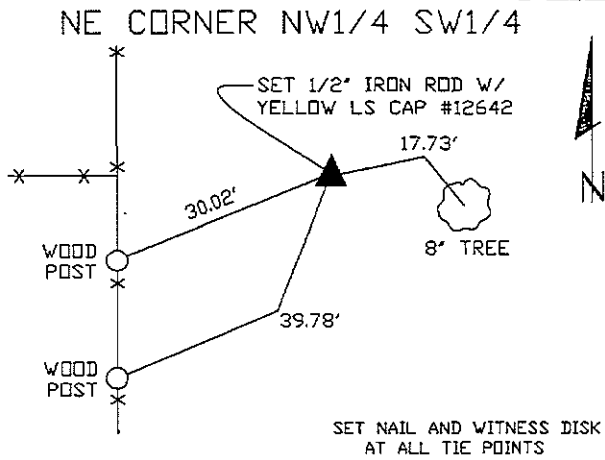
Land Survey Monuments situated in Section 31, Township 85N, Range 4W, of the Fifth Principal Meridian, Jones County, Iowa. Previously recorded in N/A in the Office of the County Recorder

Monument Description and Remarks: (No Corner Certificates found at the County Recorders Office)

NE CORNER NW1/4 SW1/4 - SET 1/2" IRON ROD W/YELLOW LS CAP #12642 - SET ON LINE BETWEEN THE W1/4 CORNER AND THE CENTER OF SECTION AT THE DISTANCE THE ORIGINAL NOTES CALLS OUT FOR

SE CORNER NW1/4 SW1/4 - SET 1/2" IRON ROD W/YELLOW LS CAP #12642 - RUN STRAIGHT LINES FROM OPPOSITE 1/4 1/4 CORNERS AND SET AT POINT OF INTERSECTION

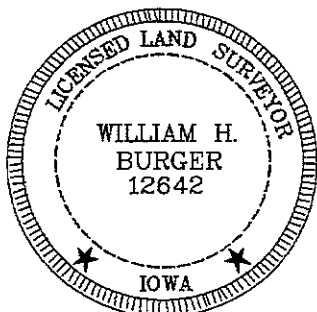
PLAN VIEW



SEC. 31 TWP. 85N RANGE 4W

CORNERS TO BE INDEXED

NE CORNER NW1/4 SW1/4	31	85N	4W
SE CORNER NW1/4 SW1/4	31	85N	4W



I hereby certify that this land surveying document was prepared and related survey work was performed by me or under my direct personal supervision and that I am a duly licensed Land Surveyor under the laws of the State of Iowa.

William H. Burger 10/5/09
 William H. Burger Date

License number 12642

My license renewal date is December 31, 2010

Pages or Sheets covered by this seal: Sheet 1 of 1