

Instrument #: 2022-3029
 10/24/2022 09:05:49 AM Total Pages: 1
 ZSC SECTION CORNER CERTIFICATE
 Recording Fee: \$7.00 Transfer Tax: \$0
 Sheri L. Jones, Recorder, Jones County Iowa



PREPARED BY: SCOTT SURVEY, INC. P.O. BOX 315 CENTER POINT IOWA 52213 319-540-5263

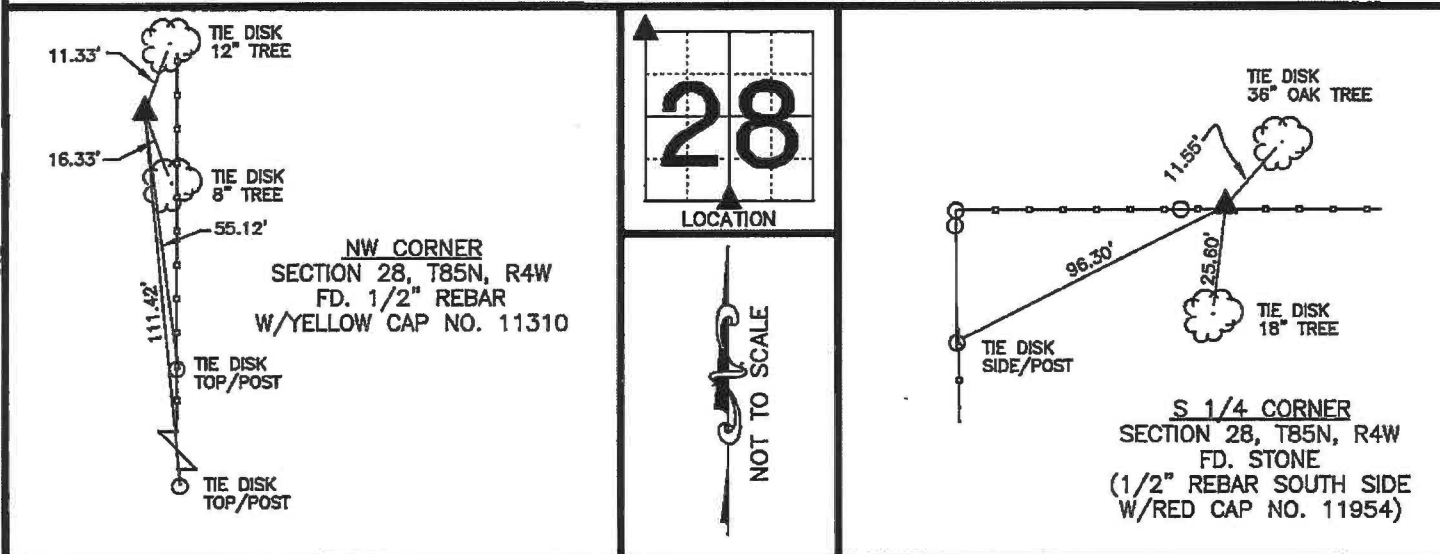
U.S. PUBLIC LAND SURVEY CORNER CERTIFICATE

FOR LAND SURVEY MONUMENTS SITUATED IN SECTION 28, TOWNSHIP 85 NORTH, RANGE 4 WEST, OF THE FIFTH PRINCIPAL MERIDIAN, JONES COUNTY, IOWA

REASON FOR PREPARING CERTIFICATE:

- A) THERE IS NO CERTIFICATE FOR THE CORNER ON FILE WITH THE RECORDER.
 B) CORNER TIES DIFFER FROM PREVIOUSLY RECORDED CERTIFICATE.

RECOVERY TIE DRAWING



MONUMENT DESCRIPTION AND REMARKS :

FOUND MONUMENT ACCORDING PLAT BOOK N, PAGE 54 AND ACCORDING TO PREVIOUSLY RECORDED CORNER CERTIFICATE FOUND IN FEE BOOK 1999 0732 THE OFFICE OF THE RECORDER, JONES COUNTY, IOWA.

MONUMENT DESCRIPTION AND REMARKS :

FOUND MONUMENT ACCORDING TO PREVIOUSLY RECORDED CORNER CERTIFICATE FOUND AT BOOK 313, PAGE 107, OFFICE OF THE RECORDER, JONES COUNTY, IOWA.



I hereby certify that this land surveying document was prepared and the related survey work was performed by me or under my direct personal supervision and that I am a duly licensed Professional Land Surveyor under the laws of the State of Iowa.

STEPHEN M. SCOTT, P.L.S. Iowa Lic. No. 13842

My license renewal date is December 31, 2022

- △ GOVERNMENT CORNER
- 1/2" TIE PIN SET
- CENTERLINE
- EXISTING FENCE LINE
- - - R.O.W. LINE

U.S. PUBLIC LAND SURVEY CORNER CERTIFICATE

SECTION 28, T85N, R4W
 NW CORNER
 S 1/4 CORNER

PROJECT NO.
 21101201

SECTION CORNER CERTIFICATE

OF
 LAND SURVEY MONUMENTS SITUATED IN SECTION 33, TOWNSHIP 85 NORTH,
 RANGE 4 WEST, OF THE FIFTH PRINCIPAL MERIDIAN, JONES, COUNTY, IOWA.

PREVIOUSLY RECORDED IN BOOK _____ AT PAGE _____ .

FOR RECORDER'S USE

REASON FOR PREPARING CERTIFICATE:

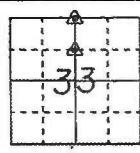
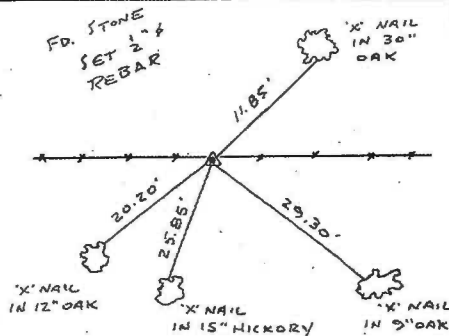
- A) THERE IS NO CERTIFICATE FOR THE CORNER ON FILE WITH THE RECORDER OF THE COUNTY IN WHICH THE CORNER IS LOCATED.
- B) CORNER POSITION DIFFERS FROM THAT SHOWN IN THE PUBLIC RECORDS OF THE COUNTY IN WHICH THE CORNER IS LOCATED.
- C) THE CORNER MONUMENT HAS BEEN REPLACED OR MODIFIED.
- D) THE REFERENCE TIES REFERRED TO IN AN EXISTING PUBLIC RECORD ARE INCORRECT.

MONUMENT DESCRIPTION AND REMARKS:

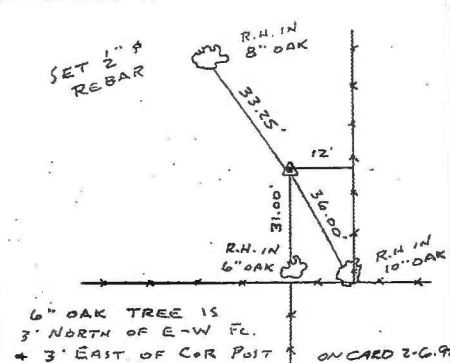
N/4 CORNER SECTION 33 - T85N - R4W FOUND LIMESTONE 3" x 5" x 11"
 NOTCHED ON TOP ON EAST-WEST FL. LINE SET 1/2" # REBAR ALONG
 SOUTH EDGE OF STONE W/ L.S. CAP # 11954
 N.W. CORNER SW 1/4 - NE 1/4 SECTION 33 - T85N - R4W SET 1/2" # REBAR W/ CAP #
 11954 FLUSH WITH GROUND

RECOVERY TIE DRAWING

N/4 Cor. 33-85-4



N.W. Cor. SW 1/4 - NE 1/4 33-85-4



I, DANIEL J. JOHNSON, CERTIFY THAT THE CORNER LOCATION(S) SHOWN ON THIS RECORD WERE DETERMINED BY ME OR UNDER MY DIRECTION AND CONTROL AND THAT THIS U.S. PUBLIC LAND SURVEY MONUMENT RECORD IS CORRECT AND COMPLETE TO THE BEST OF MY KNOWLEDGE AND BELIEF.

Daniel J. Johnson 1-22-92
 DANIEL J. JOHNSON L.S. NO 11954 DATE



DZMONT GOVERNMENT CORNER 5/8" TIN PIN SET CENTERLINE EXISTING FENCE LINE R.O.W. LINE	SHEET TITLE: U.S. PUBLIC LAND SURVEY RECORD	HALL AND HALL ENGINEERS, INC. 226 29TH STREET DRIVE S.E. CEDAR RAPIDS, IOWA 52403 319-362-9548				
	PROJECT TITLE: LAMERE SURVEY					
D W N R.W.B.	X I C D.J.J	A P P	D A T E 1-9-92	S C A L E NONE	P N O T 23	P N O J 4553