

Number: 2026-1433  
 Recorded: 5/14/2026 at 11:45:00.0 AM  
 County Recording Fee: \$7.00  
 Iowa E-Filing Fee: \$3.13  
 Combined Fee: \$10.13  
 Revenue Tax:  
 Sheri L. Jones RECORDER  
 Jones County, Iowa

PREPARED BY & RETURN TO: MICHAEL A. BROONER CIVIL DESIGN ADVANTAGE  
 4121 NW URBANDALE DRIVE URBANDALE, IOWA 50322 PH: 515-389-4400 FAX: 515-389-4410

## UNITED STATES PUBLIC LAND SURVEY CORNER CERTIFICATE OF

Land Survey Monuments situated in Section 27, Township 85N, Range 04W, of the Fifth Principal Meridian, JONES County, Iowa.

Previously recorded in COUNTY ENGINEERS TIES 1497 in County Recorder's Office.

**Monument Description and Remarks:**

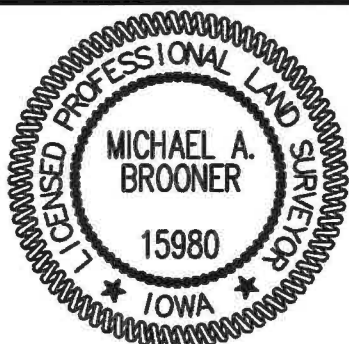
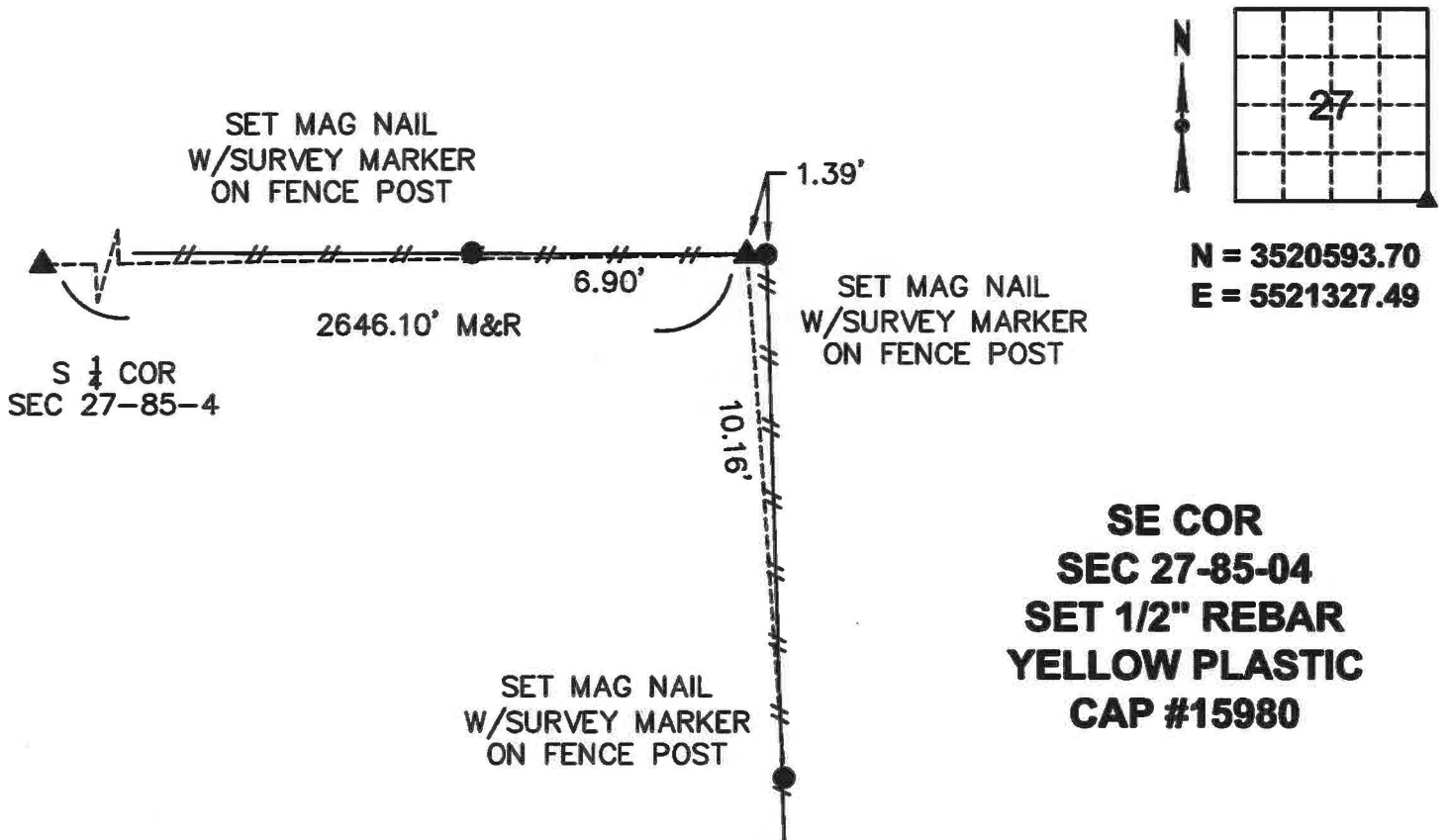
- THERE IS NO CERTIFICATE FOR THE CORNER ON FILE WITH THE RECORDER OF THE COUNTY IN WHICH THE CORNER IS LOCATED.
- THE SURVEYOR IN RESPONSIBLE CHARGE OF THE LAND SURVEYING ACCEPTS A CORNER POSITION WHICH DIFFERS FROM THAT SHOWN IN THE PUBLIC RECORDS OF THE COUNTY IN WHICH THE CORNER IS LOCATED.
- THE CORNER MONUMENT IS REPLACED OR MODIFIED IN ANY WAY.
- THE REFERENCE TIES IN AN EXISTING PUBLIC RECORD ARE INCORRECT OR MISSING.

SE CORNER SECTION 27-85-04. COUNTY ENGINEER'S TIES SHOW PREVIOUSLY FOUND STONE AT FENCES NORTH, SOUTH AND WEST. NO TIE DISTANCES SHOWN. THE PLAT OF SURVEY RECORDED IN BOOK 369, PAGE 241 SHOWS FOUND STONE AT FENCE LINE WEST. DID NOT FIND STONE. SET 1/2" REBAR WITH YELLOW PLASTIC CAP #15980 AT FENCE LINE WEST AND AT RECORD DISTANCE SHOWN ON SAID PLAT OF SURVEY.

SET TIES AND USED FOR PLAT OF SURVEY.

### PLAN VIEW

(Show a minimum of three reference ties to durable physical objects, relevant monuments and physical conditions that will enable recovery of the corner.)



I HEREBY CERTIFY THAT THIS LAND SURVEYING DOCUMENT WAS PREPARED AND THE RELATED SURVEYING WORK WAS PERFORMED BY ME OR UNDER MY DIRECT SUPERVISION AND THAT I AM A DULY LICENSED LAND SURVEYOR UNDER THE LAWS OF THE STATE OF IOWA.

*Michael Brooner* 5-12-2026  
 MICHAEL A. BROONER, P.L.S. DATE

LICENSE NUMBER 15980  
 MY LICENSE RENEWAL DATE IS DECEMBER 31, 2026.  
 CERTIFICATION COVERS THIS SHEET ONLY:

List Corners to be Indexed			
Corners	Section	Twp	Range
SE COR	27	85	04
SW COR	26	85	04
NE COR	34	85	04
NW COR	35	85	04

Tech: EMG PN:2508.665 Date: 10-08-2025

# THIS IS NOT A CERTIFICATION

JONES COUNTY ENGINEER'S OFFICE, 19501 HWY. 64, ANAMOSA, IOWA, 52205 (319)462-3785

## UNITED STATES PUBLIC LAND SURVEY CORNER CERTIFICATE

LAND SURVEY MONUMENTS SITUATED IN SECTION 34, TOWNSHIP 85  
NORTH, RANGE 4 WEST OF THE 5TH P.M., JONES COUNTY, IOWA

**CORNERS TO BE INDEXED**

CORNER SECTION TOWNSHIP RANGE  
E-QUARTER 34 85N 4W

OFFICE FILE NO.

35434e\_062404.tif



1496

REF:  
JONES COUNTY SURVEY CREW:  
(KIRCHOFF) 1936

JONES COUNTY CORNER STONE BOOK  
12, PAGE 118.

DUG 4'X18'X20' HOLE ALONG FENCE LINE,  
10' EACH SIDE NORTH AND SOUTH OF  
CORNER POST. NO EVIDENCE OF MONUMENT.

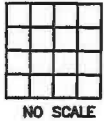
PREVIOUSLY RECORDED IN BOOK \_\_\_\_\_, PAGE \_\_\_\_\_  
MONUMENT DESCRIPTION AND HOW ESTABLISHED \_\_\_\_\_

85434e\_012405.tif

**CORNERS TO BE INDEXED**

CORNER SECTION TOWNSHIP RANGE

OFFICE FILE NO.



PREVIOUSLY RECORDED IN BOOK \_\_\_\_\_, PAGE \_\_\_\_\_  
MONUMENT DESCRIPTION AND HOW ESTABLISHED \_\_\_\_\_

**CORNERS TO BE INDEXED**

CORNER SECTION TOWNSHIP RANGE  
NORTHEAST 34 85N 4W

OFFICE FILE NO.

85434e\_062404.tif



1497

REF:  
JONES COUNTY SURVEY CREW:  
(KIRCHOFF) 12-11-35

JONES COUNTY CORNER STONE BOOK  
12, PAGE 105..

PREVIOUSLY RECORDED IN BOOK \_\_\_\_\_, PAGE \_\_\_\_\_  
MONUMENT DESCRIPTION AND HOW ESTABLISHED FOUND

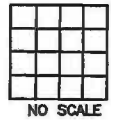
LIMESTONE 12" BELOW SURFACE AT FENCE CORNER AS INDICATED.  
NORTHEAST CORNER SECTION 34, TOWNSHIP 85 NORTH, RANGE 4  
WEST OF THE 5TH PRINCIPAL MERIDIAN, JONES COUNTY, IOWA.

85434e\_012405.tif

**CORNERS TO BE INDEXED**

CORNER SECTION TOWNSHIP RANGE

OFFICE FILE NO.



PREVIOUSLY RECORDED IN BOOK \_\_\_\_\_, PAGE \_\_\_\_\_  
MONUMENT DESCRIPTION AND HOW ESTABLISHED \_\_\_\_\_

~~I hereby declare that this plat, survey or report was made by me or under my direct personal supervision and that I am a duly registered Land Surveyor under the laws of the State of Iowa.~~

Signed: \_\_\_\_\_

SEAL

JONES COUNTY  
ENGINEER'S OFFICE

19501 HWY. 64,  
ANAMOSA, IOWA,  
52205 (319)462-3785