

THIS IS NOT A CERTIFICATION

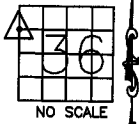
JONES COUNTY ENGINEER'S OFFICE, 19501 HWY. 64, ANAMOSA, IOWA, 52205 (319)462-3785

UNITED STATES PUBLIC LAND SURVEY CORNER CERTIFICATE

LAND SURVEY MONUMENTS SITUATED IN SECTION 36, TOWNSHIP 85
NORTH, RANGE 4 WEST OF THE 5TH P.M., JONES COUNTY, IOWA

CORNERS TO BE INDEXED

CORNER SECTION TOWNSHIP RANGE
SW,NW,NW 36 85N 4W



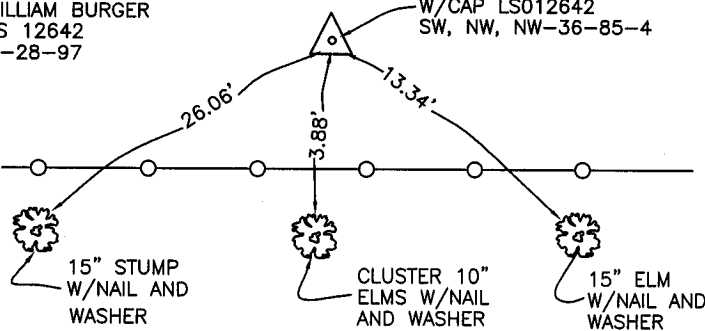
OFFICE FILE NO.

85436f_062404.tif

REF:
WILLIAM BURGER
LS 12642
5-28-97

1499

SET 1/2" IRON PIN
W/CAP LS012642
SW, NW, NW-36-85-4



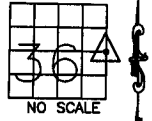
85436e_012405.tif ✓

PREVIOUSLY RECORDED IN BOOK _____, PAGE _____
MONUMENT DESCRIPTION AND HOW ESTABLISHED SET

1/2" IRON PIN WITH CAP LS 12642, SOUTHWEST CORNER, NORTHWEST QUARTER, SECTION 36, TOWNSHIP 85 NORTH, RANGE 4 WEST OF THE 5TH PRINCIPAL MERIDIAN, JONES COUNTY, IOWA.

CORNERS TO BE INDEXED

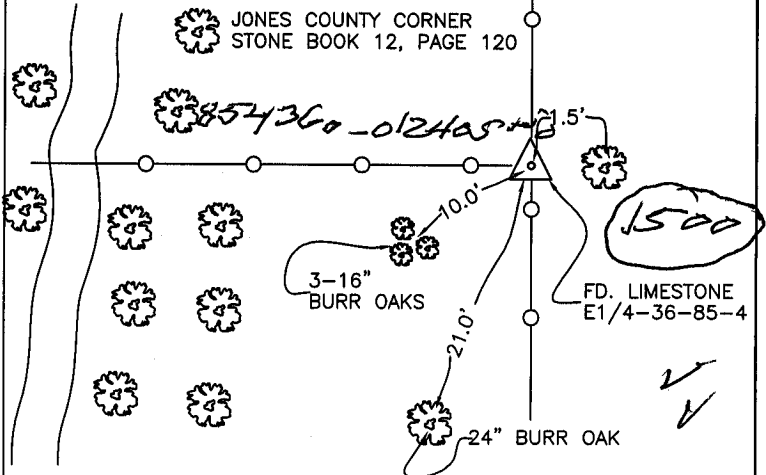
CORNER SECTION TOWNSHIP RANGE
E-QUARTER 36 85N 4W



OFFICE FILE NO.

85436o_062404.tif

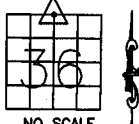
REF:
JONES COUNTY SURVEY:
(KIRCHOFF) 12-23-35



PREVIOUSLY RECORDED IN BOOK _____, PAGE _____
MONUMENT DESCRIPTION AND HOW ESTABLISHED FOUND
LARGE LIMESTONE 6" ABOVE SURFACE, EAST QUARTER CORNER SECTION 36, TOWNSHIP 85 NORTH, RANGE 4 WEST OF THE 5TH PRINCIPAL MERIDIAN, JONES COUNTY, IOWA. SET TIES AS INDICATED.

CORNERS TO BE INDEXED

CORNER SECTION TOWNSHIP RANGE
N-QUARTER 36 85N 4W

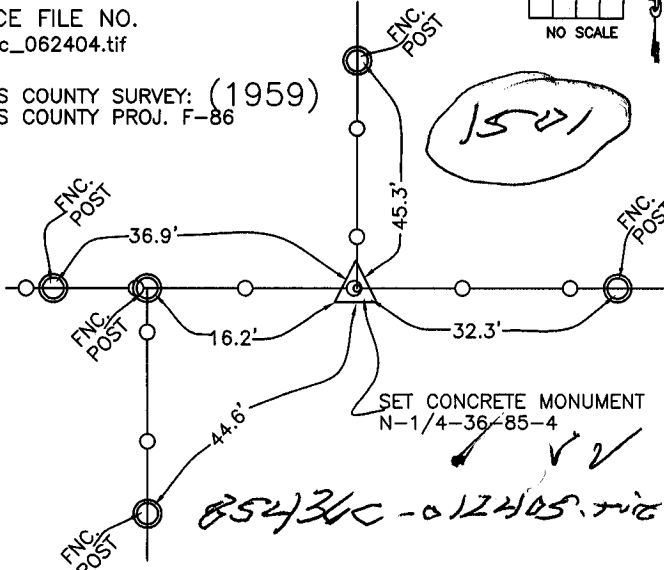


OFFICE FILE NO.

85436c_062404.tif

REF:
JONES COUNTY SURVEY: (1959)
JONES COUNTY PROJ. F-86

1501



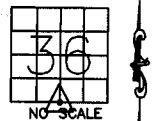
85436c_012405.tif ✓

PREVIOUSLY RECORDED IN BOOK _____, PAGE _____
MONUMENT DESCRIPTION AND HOW ESTABLISHED SET

STANDARD CONCRETE MONUMENT AS INDICATED, NORTH QUARTER CORNER SECTION 36, TOWNSHIP 85 NORTH, RANGE 4 WEST OF THE 5TH PRINCIPAL MERIDIAN, JONES COUNTY, IOWA.

CORNERS TO BE INDEXED

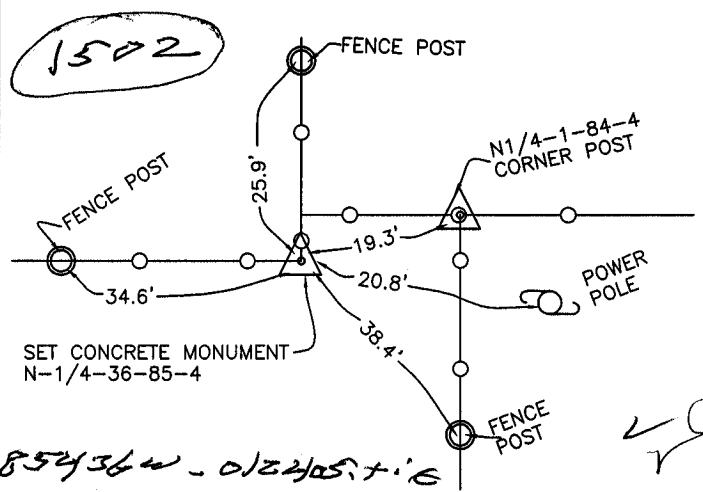
CORNER SECTION TOWNSHIP RANGE
S-QUARTER 36 85N 4W



OFFICE FILE NO.

85436w_062404.tif

JONES COUNTY SURVEY: (1959)
JONES COUNTY PROJ. F-86



85436w_012405.tif ✓

PREVIOUSLY RECORDED IN BOOK _____, PAGE _____
MONUMENT DESCRIPTION AND HOW ESTABLISHED SET

STANDARD CONCRETE MONUMENT AS INDICATED, SOUTH QUARTER CORNER SECTION 36, TOWNSHIP 85 NORTH, RANGE 4 WEST OF THE 5TH PRINCIPAL MERIDIAN, JONES COUNTY, IOWA.

~~I hereby declare that this plat, survey or report was made by me or under my direct personal supervision and that I am a duly registered Land Surveyor under the laws of the State of Iowa.~~

Signed:

SEAL

JONES COUNTY
ENGINEER'S OFFICE

19501 HWY. 64,
ANAMOSA, IOWA,
52205 (319)462-3785