

97 JUN -2 AM 10:39

BOOK 426 PAGE 56
LINDA J. BENDIXEN
RECORDER

Prepared by Wm. Burger Land Surveyors 510 3rd Street West Court, Worthington, Iowa Phone 319 - 855 2028

UNITED STATES PUBLIC LAND SURVEY CORNER CERTIFICATE

Land Survey Monuments situated in Section 36, Township 85NORTH, Range 4WEST, of the Fifth Principal Meridian, Jones County, Iowa. Previously recorded in NA in County Recorder's Office.

Monument Description and Remarks: (No Corner Certificates found at the County Recorders Office)

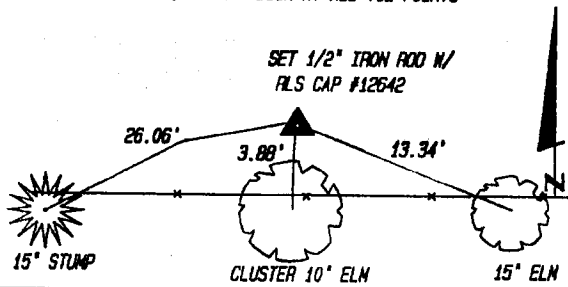
SW CORNER NW1/4 SW1/4 SET 1/2" IRON ROD W/RLS CAP #12642 ON LINE AND MIDWAY BETWEEN THE SW CORNER AND THE WEST 1/4 CORNER OF SAID SECTION 36

SE CORNER NW1/4 SW1/4 USED INFORMATION FROM A RECORDED PLAT IN BOOK 6 PAGE 32 TO RE-ESTABLISH THIS CORNER RUN STRAIGHT LINES FROM OPPOSITE 1/4 1/4 CORNERS OF THE SW 1/4 OF SAID SECTION 36 ADJUSTED TO FIT SAID PLAT RECORDED IN BOOK 6, PAGE 32

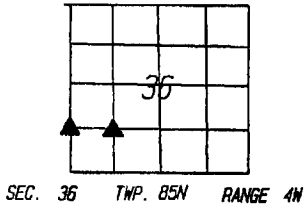
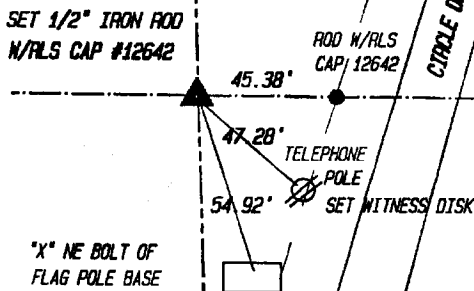
SW CORNER NW1/4 SW1/4

PLAN VIEW

NOTE: SET NAIL W/WITNESS DISK AT ALL TIE POINTS



SE CORNER NW1/4 SW1/4



I hereby certify that this land surveying document was prepared and related survey work was performed by me or under my direct personal supervision and that I am a duly licensed Land Surveyor under the laws of the State of Iowa.

William H. Burger 5/28/97
Date

William H. Burger
License number 12642

My license renewal date is December 31, 1998

Pages or Sheets covered by this seal: Sheet 1 of 1

CORNERS TO BE INDEXED

Corner

SW COR. NW1/4 SW1/4 Section 36 Twp 85N Range 4W
SE COR. NW1/4 SW1/4 Section 36 Twp 85N Range 4W
_____ Section _____ Twp _____ Range _____
_____ Section _____ Twp _____ Range _____

85435+ - 052897
85436g - 052897