

Number: 2026-1570
 Recorded: 5/28/2026 at 9:08:16.0 AM
 County Recording Fee: \$7.00
 Iowa E-Filing Fee: \$3.13
 Combined Fee: \$10.13
 Revenue Tax:
 Sheri L. Jones RECORDER
 Jones County, Iowa

PREPARED BY & RETURN TO: MICHAEL A. BROONER CIVIL DESIGN ADVANTAGE
 4121 NW URBANDALE DRIVE URBANDALE, IOWA 50322 PH: 515-369-4400 FAX: 515-369-4410

UNITED STATES PUBLIC LAND SURVEY CORNER CERTIFICATE OF

Land Survey Monuments situated in Section 26, Township 85N, Range 04W, of the
 Fifth Principal Meridian, JONES County, Iowa.
 Previously recorded in NONE in County Recorder's Office.

Monument Description and Remarks:

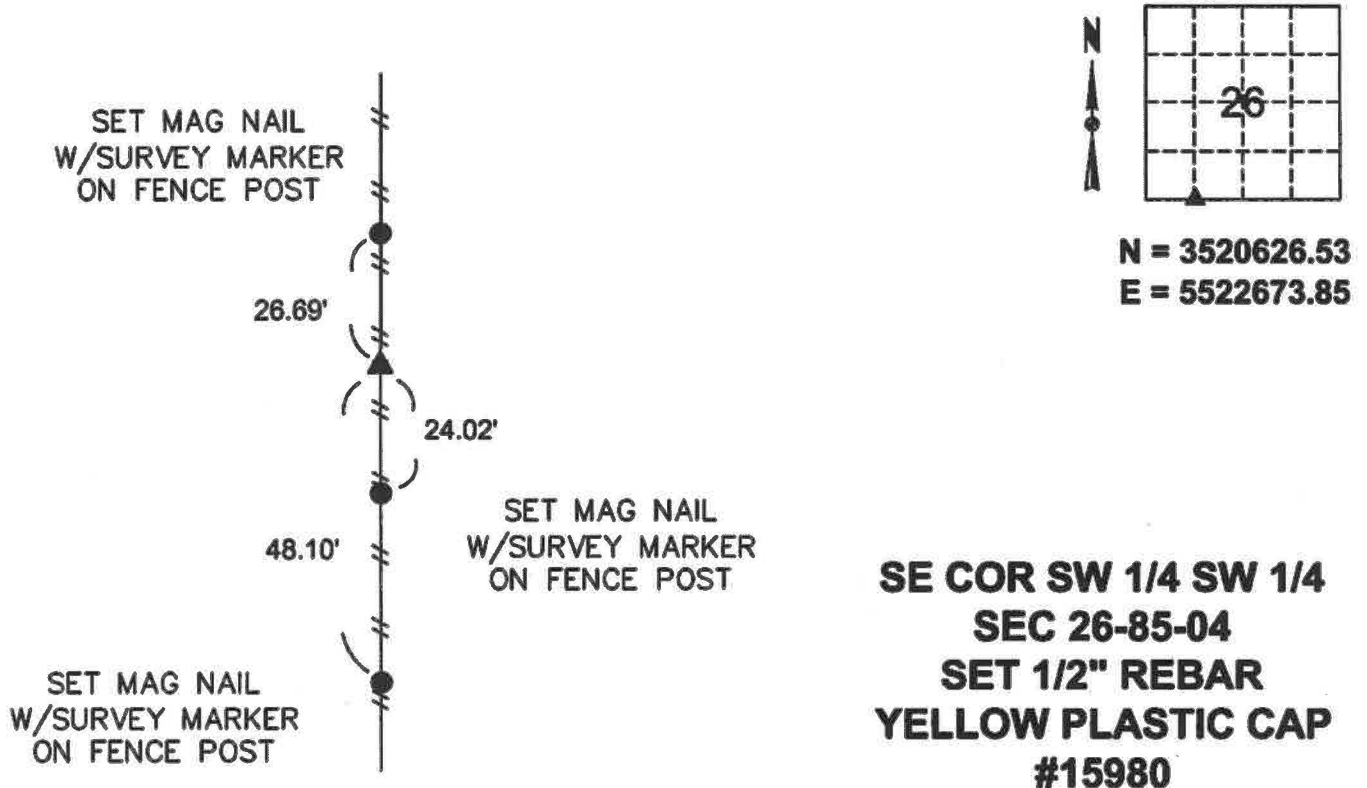
- THERE IS NO CERTIFICATE FOR THE CORNER ON FILE WITH THE RECORDER OF THE COUNTY IN WHICH THE CORNER IS LOCATED.
- THE SURVEYOR IN RESPONSIBLE CHARGE OF THE LAND SURVEYING ACCEPTS A CORNER POSITION WHICH DIFFERS FROM THAT SHOWN IN THE PUBLIC RECORDS OF THE COUNTY IN WHICH THE CORNER IS LOCATED.
- THE CORNER MONUMENT IS REPLACED OR MODIFIED IN ANY WAY.
- THE REFERENCE TIES IN AN EXISTING PUBLIC RECORD ARE INCORRECT OR MISSING.

SE CORNER SW 1/4 SW 1/4 - SET 1/2" REBAR YELLOW PLASTIC CAP #15980 AT FENCE LINE NORTH AND SOUTH AND ON SECTION LINE EAST AND WEST. SET LOCATION WITHIN 0.6' OF MIDPOINT BETWEEN SECTION CORNERS EAST AND WEST.

USED SECTION CORNER FOR PLAT OF SURVEY.

PLAN VIEW

(Show a minimum of three reference ties to durable physical objects, relevant monuments and physical conditions that will enable recovery of the corner.)



I HEREBY CERTIFY THAT THIS LAND SURVEYING DOCUMENT WAS PREPARED AND THE RELATED SURVEYING WORK WAS PERFORMED BY ME OR UNDER MY DIRECT SUPERVISION AND THAT I AM A DULY LICENSED LAND SURVEYOR UNDER THE LAWS OF THE STATE OF IOWA.

Michael Brooner 5-27-2026
 MICHAEL A. BROONER, P.L.S. DATE

LICENSE NUMBER 15980
 MY LICENSE RENEWAL DATE IS DECEMBER 31, 2026.
 CERTIFICATION COVERS THIS SHEET ONLY:

List Corners to be Indexed			
Corners	Section	Twp	Range
SE COR SW 1/4 SW 1/4	26	85	04
NE COR NW 1/4 NW 1/4	35	85	04