

20052261

FILED  
RECORDERS OFFICE  
JONES COUNTY IOWA

05 JUN 29 AM 10:25

MARIE KRUTZFIELD  
RECORDER 7.00 PD

DENNIS R. KUNZE IOWA DEPARTMENT OF TRANSPORTATION P.O. BOX 3150 CEDAR RAPIDS, IOWA 52406-3150 PH. (319)364-0235

# UNITED STATES PUBLIC LAND SURVEY CORNER CERTIFICATE OF

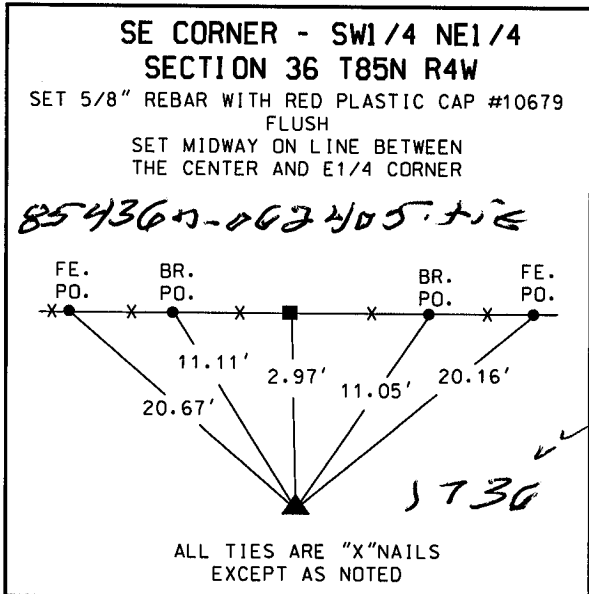
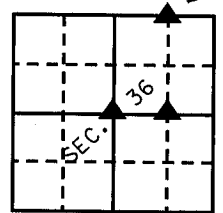
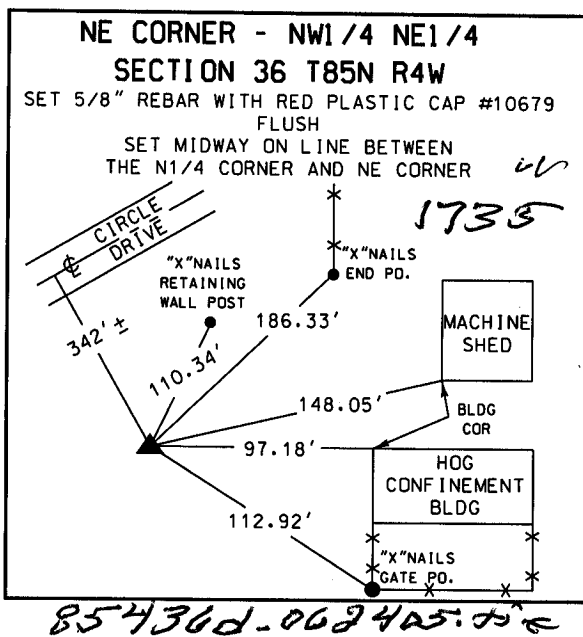
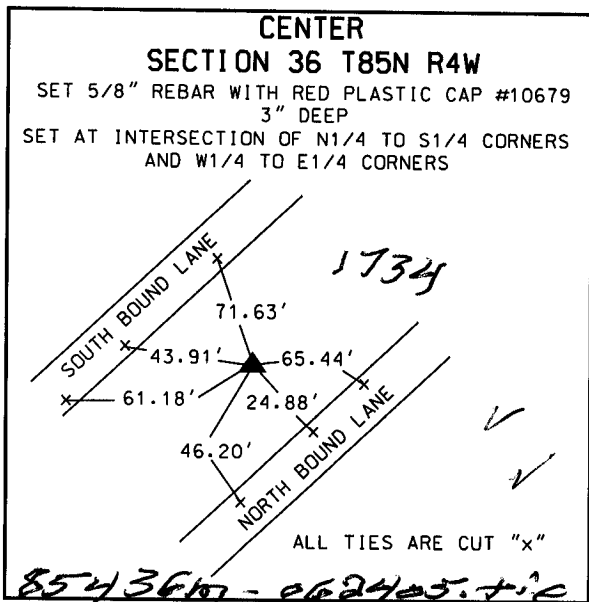
LAND SURVEY MONUMENTS SITUATED IN SECTION 36, TOWNSHIP 85 NORTH, RANGE 4 WEST, OF THE 5TH PRINCIPAL MERIDIAN JONES COUNTY IOWA.

PREVIOUSLY RECORDED IN N. A. IN COUNTY RECORDER'S OFFICE.

(book, page, document number, etc.)

(Show reason for preparing this certificate, the evidence and detailed procedures used in establishing the corner positions and monumentation found or placed.)

MONUMENT DESCRIPTION AND REMARKS: SEE BELOW



### LEGEND

- x- = FENCE
- S.C.M. = STANDARD CONCRETE MONUMENT
- = POWER POLE
- ▲ = SECTION CORNER
- = TREE



I hereby certify that this land surveying document was prepared by me or under my direct personal supervision and that I am a duly licensed Land Surveyor under the laws of the State of Iowa.

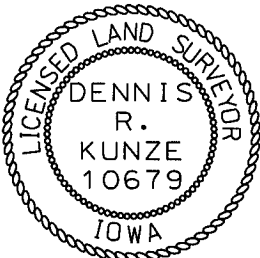
*Dennis R. Kunze* 6-24-2005

DENNIS R. KUNZE DATE:

License number 10679

My license renewal date is December 31, 2006

Pages covered by this seal: This page



### LAND CORNERS TO BE RECORDED

Corners	Section	Twp.	Range
CENTER	36	85N	4W
NE CORNER NW1/4 NE1/4	36	85N	4W
SE CORNER SW1/4 NE1/4	36	85N	4W

3229

FILED  
RECORDERS OFFICE  
JONES COUNTY IOWA

96 APR 22 AM 10:39

BOOK 398 PAGE 44  
LINDA J. BENDIXEN  
RECORDER *llj*

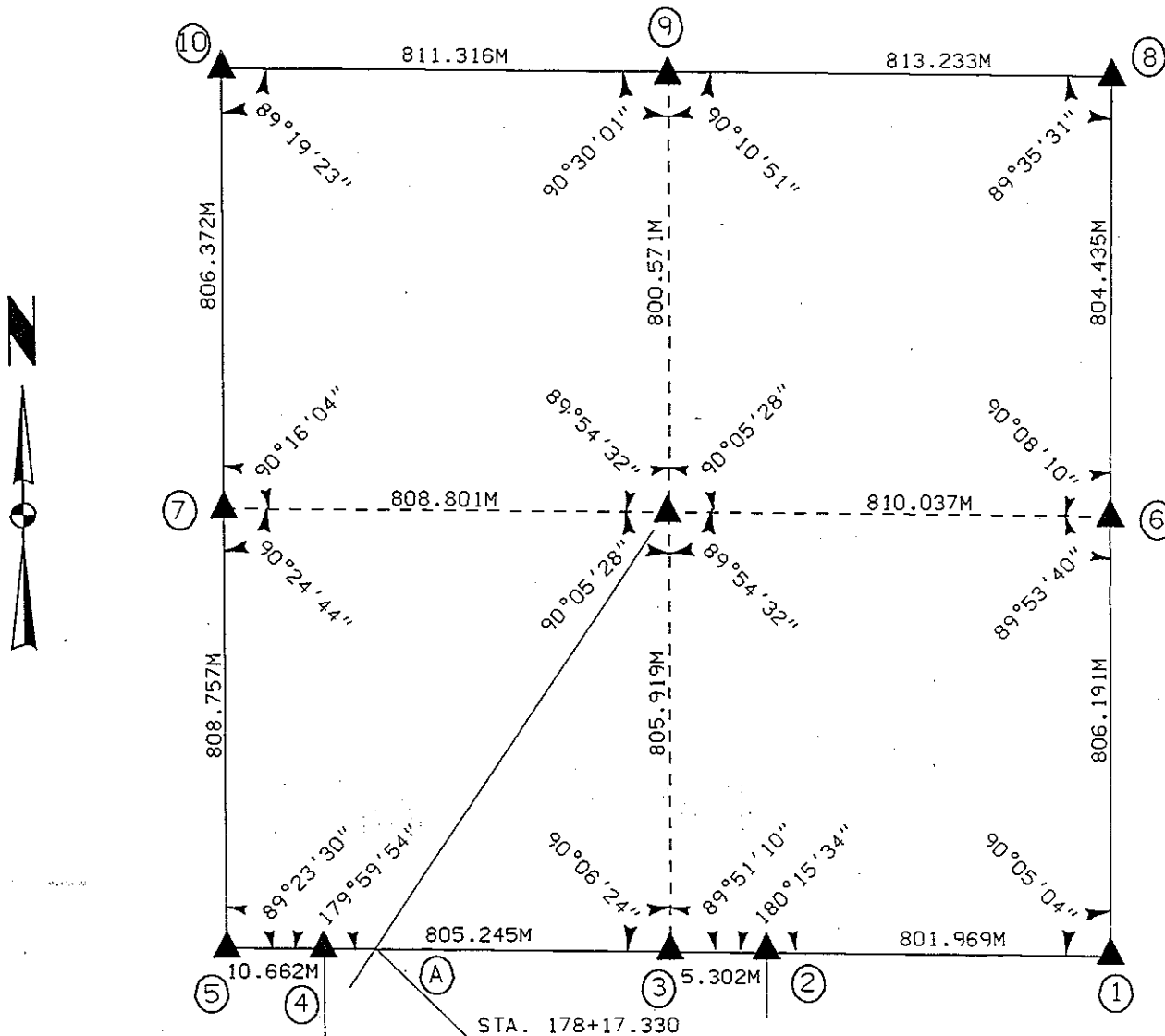
RUST ENVIRONMENT & INFRASTRUCTURE 501 SYCAMORE STREET WATERLOO, IOWA 50703 1-319-232-65

UNITED STATES PUBLIC SECTION CORNER CERTIFICATION  
AND LAND CORNER SURVEY  
SECTION 36 T-85N R-4W

MADE FOR  
IOWA DEPARTMENT OF TRANSPORTATION FOR THE PURPOSE OF  
RIGHT OF WAY DESCRIPTIONS ON PRIMARY ROAD No. U.S. 151

MADE BY  
MICHAEL R. FAGLE R.L.S. No. 8505  
JONES COUNTY, IOWA NHS-151-3(84)--19-57  
APRIL 1994 THRU AUGUST 1995

ALL DISTANCES WERE CAREFULLY MEASURED AND MAY NOT AGREE WITH ROAD SURVEY STATIONING



I hereby certify that this land surveying document was prepared by me or under my direct personal supervision and that I am a duly Registered Land Surveyor under the laws of the State of Iowa.

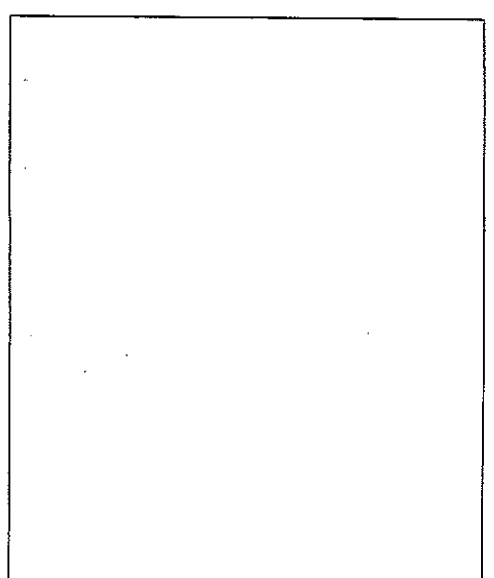
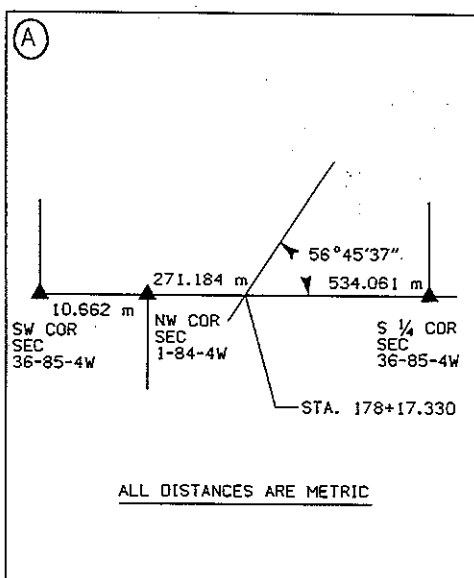
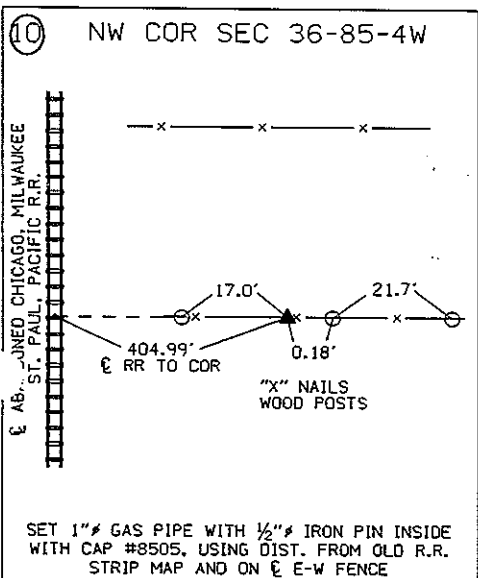
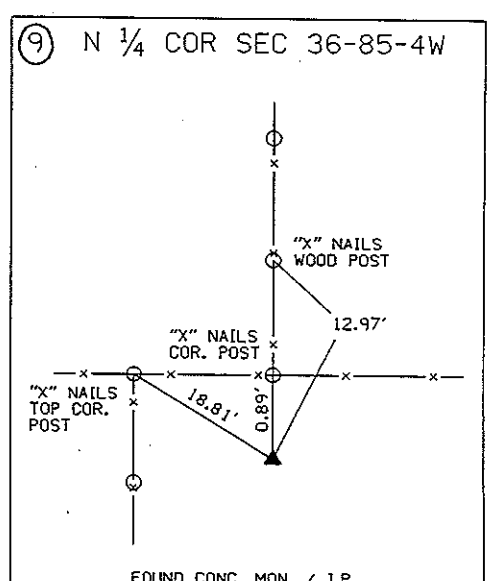
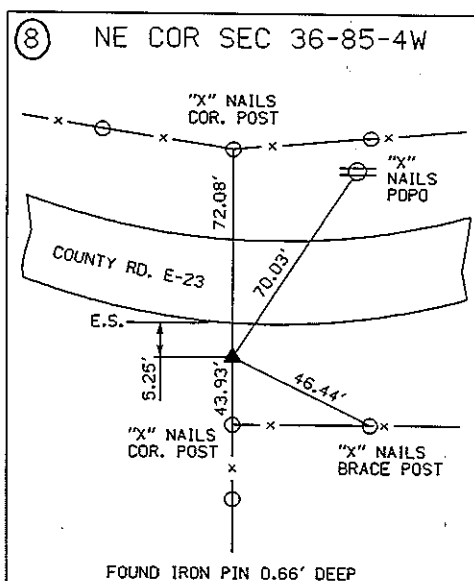
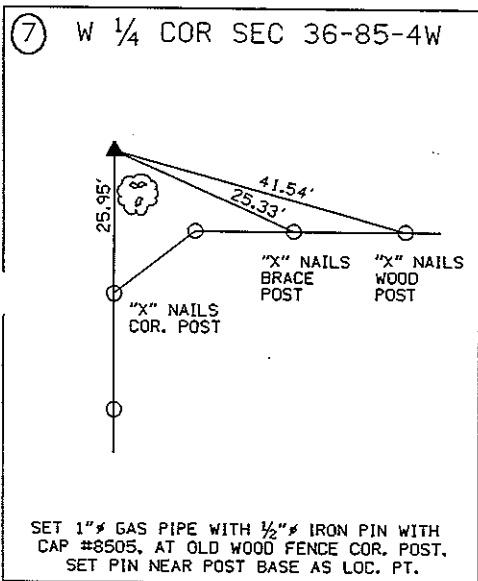
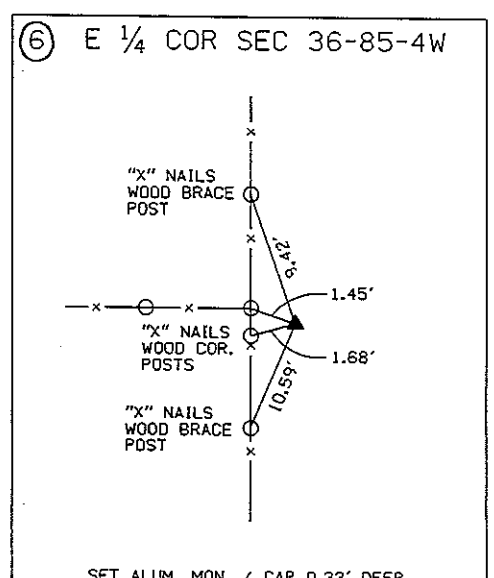
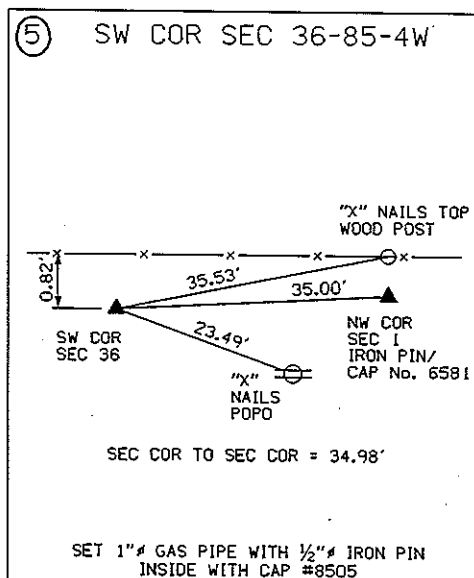
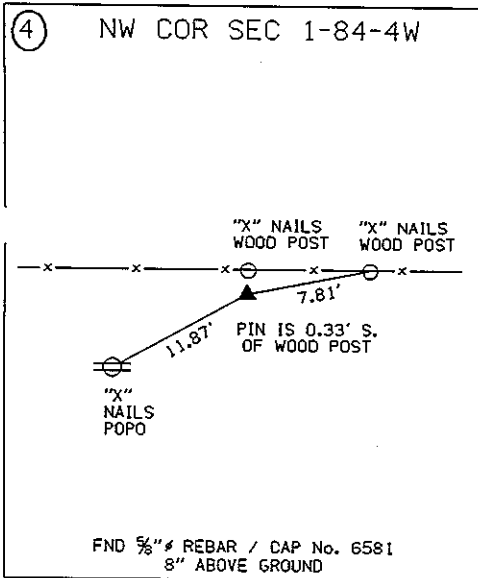
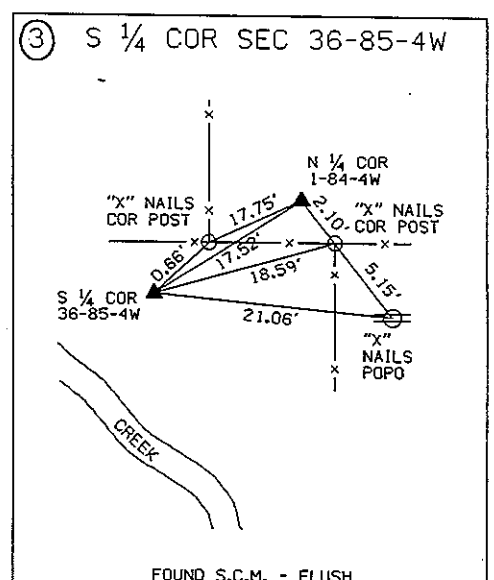
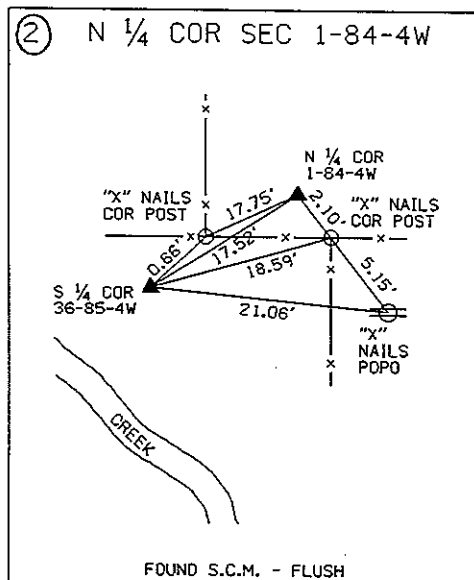
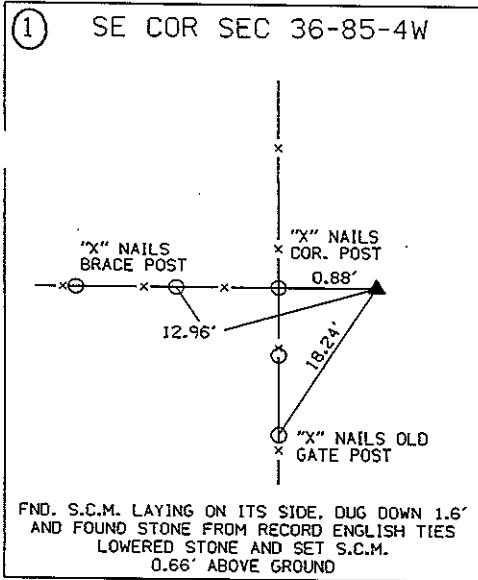
Signature: *Michael R Fagle*  
Name: MICHAEL R. FAGLE, L.S.

Date 4-18-1996 Reg No. 8505

My registration renewal date is December 31, 1996

UNITED STATES PUBLIC SECTION CORNER CERTIFICATION  
AND LAND CORNER SURVEY

SECTION 36 T-85N R-4W



**ALL TIES ARE ENGLISH UNLESS OTHERWISE NOTED**