

2005 0605

FILED
RECORDERS OFFICE
JONES COUNTY IOWA

05 FEB 23 PM 12:55

MARIE KRUTZFIELD 7.00 Pd

DENNIS R. KUNZE IOWA DEPARTMENT OF TRANSPORTATION PUBLIC RECORDS DIVISION DES MOINES, IOWA 52406-3150 PH. (319)364-0235

RECORDED
UNITED STATES PUBLIC LAND SURVEY CORNER CERTIFICATE
OF

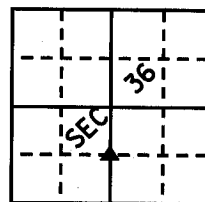
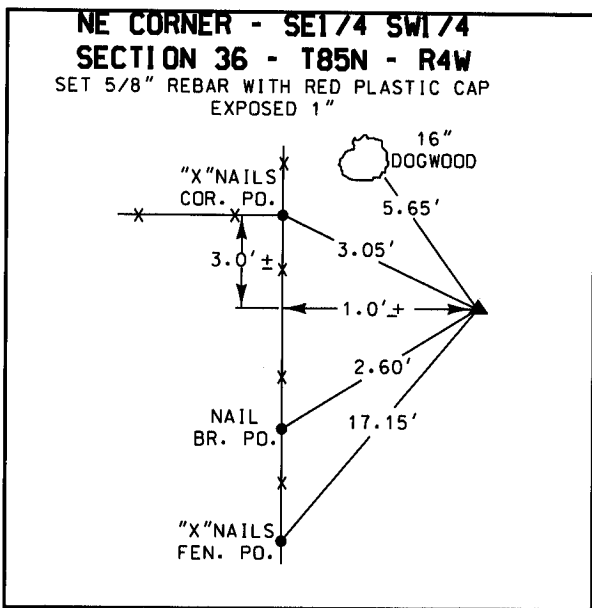
LAND SURVEY MONUMENTS SITUATED IN SECTION 36, TOWNSHIP 85 NORTH, RANGE 4 WEST, OF THE 5TH PRINCIPAL MERIDIAN JONES COUNTY IOWA.

PREVIOUSLY RECORDED IN N.A. IN COUNTY RECORDER'S OFFICE.

(book, page, document number, etc.)

(Show reason for preparing this certificate, the evidence and detailed procedures used in establishing the corner positions and monumentation found or placed.)

MONUMENT DESCRIPTION AND REMARKS: SEE BELOW



1576

854364-022205



The NE Corner of the SE1/4 SW1/4 was set at the intersection of the line between the S1/4 Corner and the N1/4 Corner with the line from the found NW Corner of the SE1/4 SW1/4 through the found pipe at the NE Corner of Lot 1 of "Stiffler Place". This location agrees with relative bearings shown on a plat recorded in Plat Book M, Page 76 of the Jones County Recorder and the relative angles shown on Plat of Stiffler Place recorded in Book G, Page 32 of the Jones County Recorder. The location of this set corner fits closely with fences North, South and West of the corner.

I hereby certify that this land surveying document was prepared by me or under my direct personal supervision and that I am a duly licensed Land Surveyor under the laws of the State of Iowa.

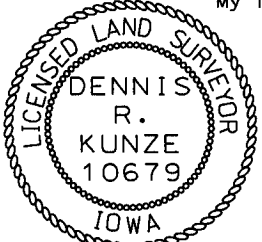
Dennis R. Kunze 2-22-2005
DENNIS R. KUNZE DATE:

License number 10679

My license renewal date is December 31, 2006

Pages covered by this seal:

this page



LAND CORNERS TO BE RECORDED

Corners	Section	Twp.	Range
NE CORNER SE1/4 SW1/4	36	85N	4W

