

Instrument #: 2016-2529
 09/13/2016 10:42:00 AM Total Pages: 1
 ZSC SECTION CORNER CERTIFICATE
 Recording Fee: \$7.00 Transfer Tax: \$0
 Sheri L. Jones, Recorder, Jones County Iowa



PREPARED BY: SCOTT SURVEY, INC. P.O. BOX 315 CENTER POINT IOWA 52213 319-540-5263

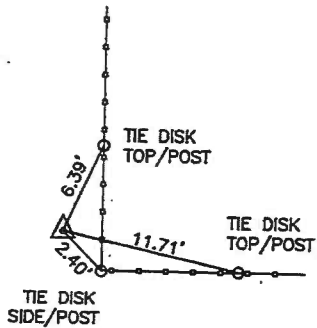
U.S. PUBLIC LAND SURVEY CORNER CERTIFICATE

FOR LAND SURVEY MONUMENTS SITUATED IN SECTION 3, TOWNSHIP 85 NORTH, RANGE 4 WEST, OF THE FIFTH PRINCIPAL MERIDIAN, JONES COUNTY, IOWA

REASON FOR PREPARING CERTIFICATE:

- A) THERE IS NO CERTIFICATE FOR THE CORNER ON FILE WITH THE RECORDER. (NW CORNER NE 1/4 SW 1/4)
- B) CORNER TIES DIFFER FROM PREVIOUSLY RECORDED CERTIFICATE. (CENTER)

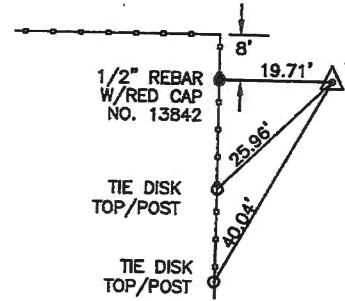
RECOVERY TIE DRAWING



NW CORNER
 NE 1/4 SW 1/4
 SECTION 3, T85N, R4W
 SET 1/2" REBAR
 W/RED CAP NO. 13842



LOCATION



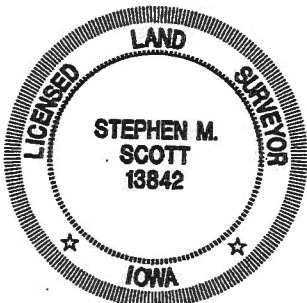
CENTER OF SECTION
 SECTION 3, T85N, R4W
 SET 1/2" REBAR
 W/RED CAP NO. 13842

MONUMENT DESCRIPTION AND REMARKS :

SET MONUMENT ACCORDING TO A SURVEY OF PARCEL 2016-35, THE PLAT OF WHICH CAN BE FOUND AT DOCUMENT 2016-1512 IN THE OFFICE OF THE RECORDER, JONES COUNTY, IOWA.

MONUMENT DESCRIPTION AND REMARKS :

SET MONUMENT ACCORDING TO A SURVEY OF PARCEL 2016-35, THE PLAT OF WHICH CAN BE FOUND AT DOCUMENT 2016-1512 IN THE OFFICE OF THE RECORDER, JONES COUNTY, IOWA. THE CORNER WAS SET AT THE CALCULATED INTERSECTION OF LINES BETWEEN QUARTER CORNERS BASED ON AN ACQUISITION PLAT FOUND AT DOCUMENT 2000-0836 AND IN AGREEMENT WITH OTHER SURVEYS IN THE SECTION. PREVIOUS CORNER CERT. FOUND AT DOCUMENT 2000-0834 REFERS TO A LOCATION AND MONUMENT 81.53' SOUTHWESTERLY OF THE NEWLY SET LOCATION.



I hereby certify that this land surveying document was prepared and the related survey work was performed by me or under my direct personal supervision and that I am a duly licensed Land Surveyor under the laws of the State of Iowa.

[Signature] ,2016
 STEPHEN M. SCOTT, L.S. Iowa Lic. No. 13842
 My license renewal date is December 31, 2016.

- GOVERNMENT CORNER
- 1/2" TIE PIN SET
- CENTERLINE
- EXISTING FENCE LINE
- R.O.W. LINE

U.S. PUBLIC LAND SURVEY CORNER CERTIFICATE

SECTION 3, T85N, R4W
 NW CORNER NE 1/4 SW 1/4
 CENTER OF SECTION

PROJECT NO.
 1664001