

1999 3646

FILED
RECORDERS OFFICE
JONES COUNTY IOWA

99 OCT 13 AM 10:13

MARIE KRUTZFIELD
RECORDER *6.00pl*

BRAIN ENGINEERING, INC., 777 10TH STREET, MARION, IOWA 52302 PH. (319) 373-1318

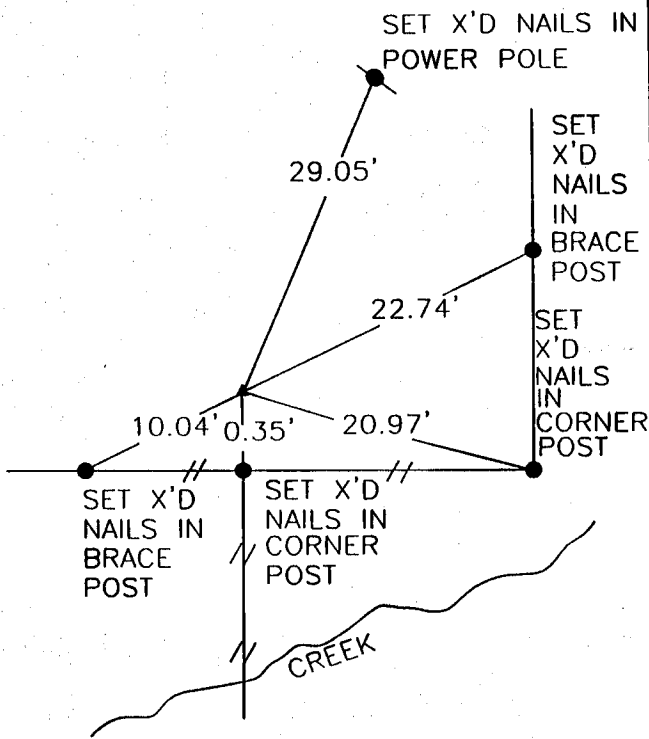
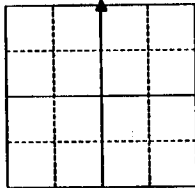
UNITED STATES PUBLIC LAND SURVEY CORNER CERTIFICATE

LAND SURVEY MONUMENTS SITUATED IN SECTION 3, TOWNSHIP 85 NORTH
RANGE 4 WEST OF THE 5TH P.M., JONES COUNTY, IOWA.

NO SCALE



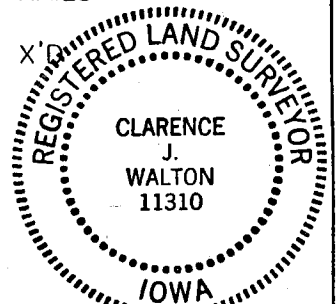
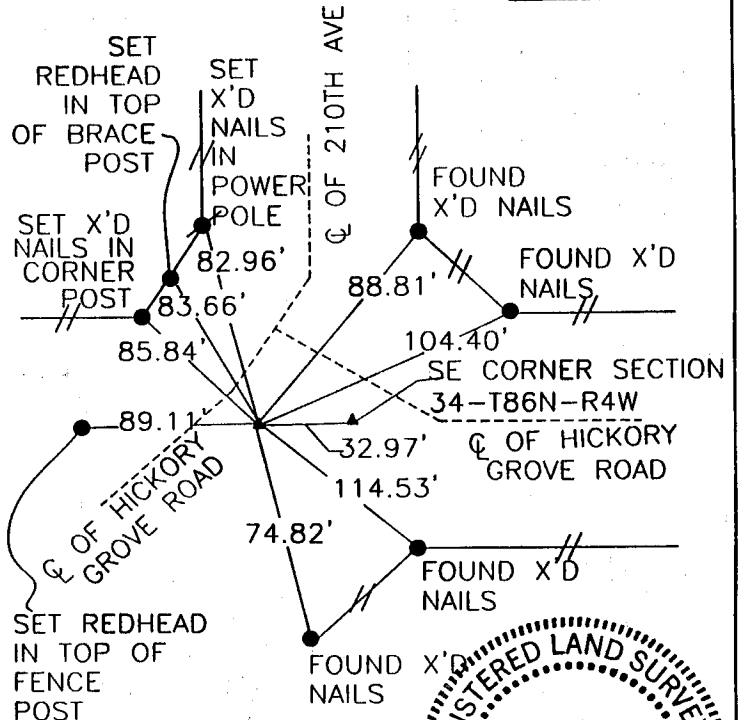
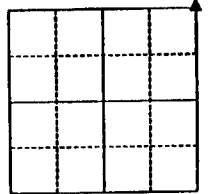
N 1/4



NO SCALE



NE CORNER



PREVIOUSLY RECORDED IN BOOK _____ PAGE _____

MONUMENT DESCRIPTION AND HOW ESTABLISHED _____

SET 1/2" REBAR CAP #11310

PREVIOUSLY RECORDED IN BOOK _____ PAGE _____

MONUMENT DESCRIPTION AND HOW ESTABLISHED _____

FOUND 1/2" REBAR HALL & HALL PIN #8165

I hereby declare that this plat, survey or report was made by me or under my direct personal supervision and that I am a duly registered Land Surveyor under the laws of the State of Iowa.

Signed *Clarence J. Walton* Date *10/12/99*

Clarence J. Walton L.S. Iowa Reg No. 11310
My Registration Renewal Date Is December 31, 1999

CORNERS TO BE INDEXED

CORNER	SECTION	TOWNSHIP	RANGE
N 1/4	3	T85N	R4W
NE CORNER	3	T85N	R4W

BRAIN ENGINEERING, INC.

777 10TH STREET
MARION, IOWA 52302 25049-10
(319) 373-1318