

Instrument #: 2016-2528
 09/13/2016 10:42:00 AM Total Pages: 1
 ZSC SECTION CORNER CERTIFICATE
 Recording Fee: \$7.00 Transfer Tax: \$0
 Sheri L. Jones, Recorder, Jones County Iowa



PREPARED BY: SCOTT SURVEY, INC. P.O. BOX 315 CENTER POINT IOWA 52213 319-540-5263

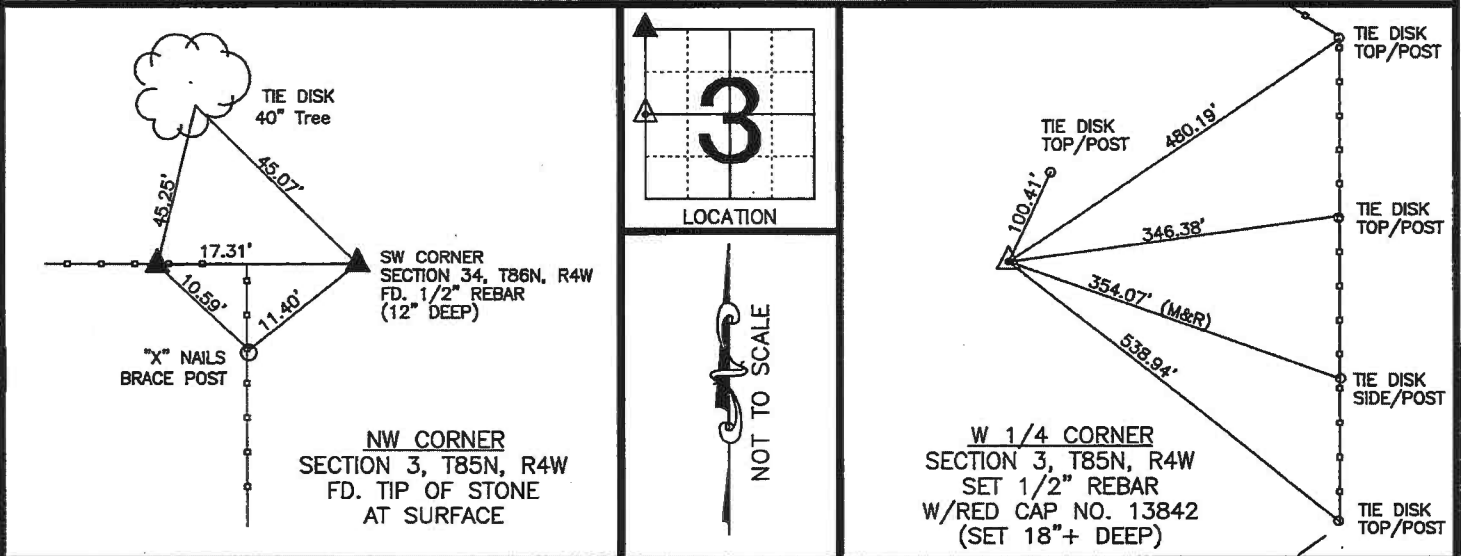
U.S. PUBLIC LAND SURVEY CORNER CERTIFICATE

FOR LAND SURVEY MONUMENTS SITUATED IN SECTION 3, TOWNSHIP 85 NORTH, RANGE 4 WEST, OF THE FIFTH PRINCIPAL MERIDIAN, JONES COUNTY, IOWA

REASON FOR PREPARING CERTIFICATE:

- A) THERE IS NO CERTIFICATE FOR THE CORNER ON FILE WITH THE RECORDER. (NW CORNER)
- B) CORNER TIES DIFFER FROM PREVIOUSLY RECORDED CERTIFICATE. (W 1/4 CORNER)

RECOVERY TIE DRAWING

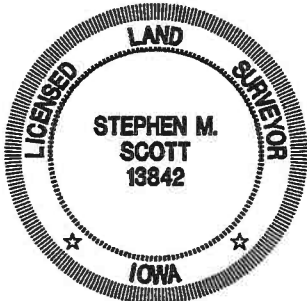


MONUMENT DESCRIPTION AND REMARKS :

FOUND MONUMENT ACCORDING TO CORNER CERTIFICATE FOR THE SW CORNER OF SECTION 34 WHICH CAN BE FOUND AT BOOK 310 PAGE 64, OFFICE OF THE RECORDER, JONES COUNTY, IOWA.

MONUMENT DESCRIPTION AND REMARKS :

SET MONUMENT BASED ON AN ACQUISITION PLAT FOUND AT DOCUMENT 2000-0836, OFFICE OF THE RECORDER, JONES COUNTY, IOWA. PREVIOUS CORNER CERT. FOUND AT DOCUMENT 2000-0830 REFERENCES A MONUMENT DESTROYED BY FARMING OPERATIONS.



I hereby certify that this land surveying document was prepared and the related survey work was performed by me or under my direct personal supervision and that I am a duly licensed Land Surveyor under the laws of the State of Iowa.

Stephen M. Scott, 2016
 STEPHEN M. SCOTT, L.S. Iowa Lic. No. 13842
 My license renewal date is December 31, 2016.

- GOVERNMENT CORNER
- 1/2" TIE PIN SET
- CENTERLINE
- EXISTING FENCE LINE
- R.O.W. LINE

U.S. PUBLIC LAND SURVEY CORNER CERTIFICATE

SECTION 3, T85N, R4W
 NW CORNER
 W 1/4 CORNER

PROJECT NO.
 1664001

2000 0830

FILED
RECORDERS OFFICE
JONES COUNTY IOWA

00 MAR 10 AM 8:38

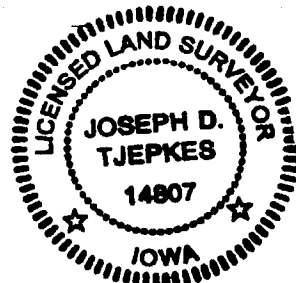
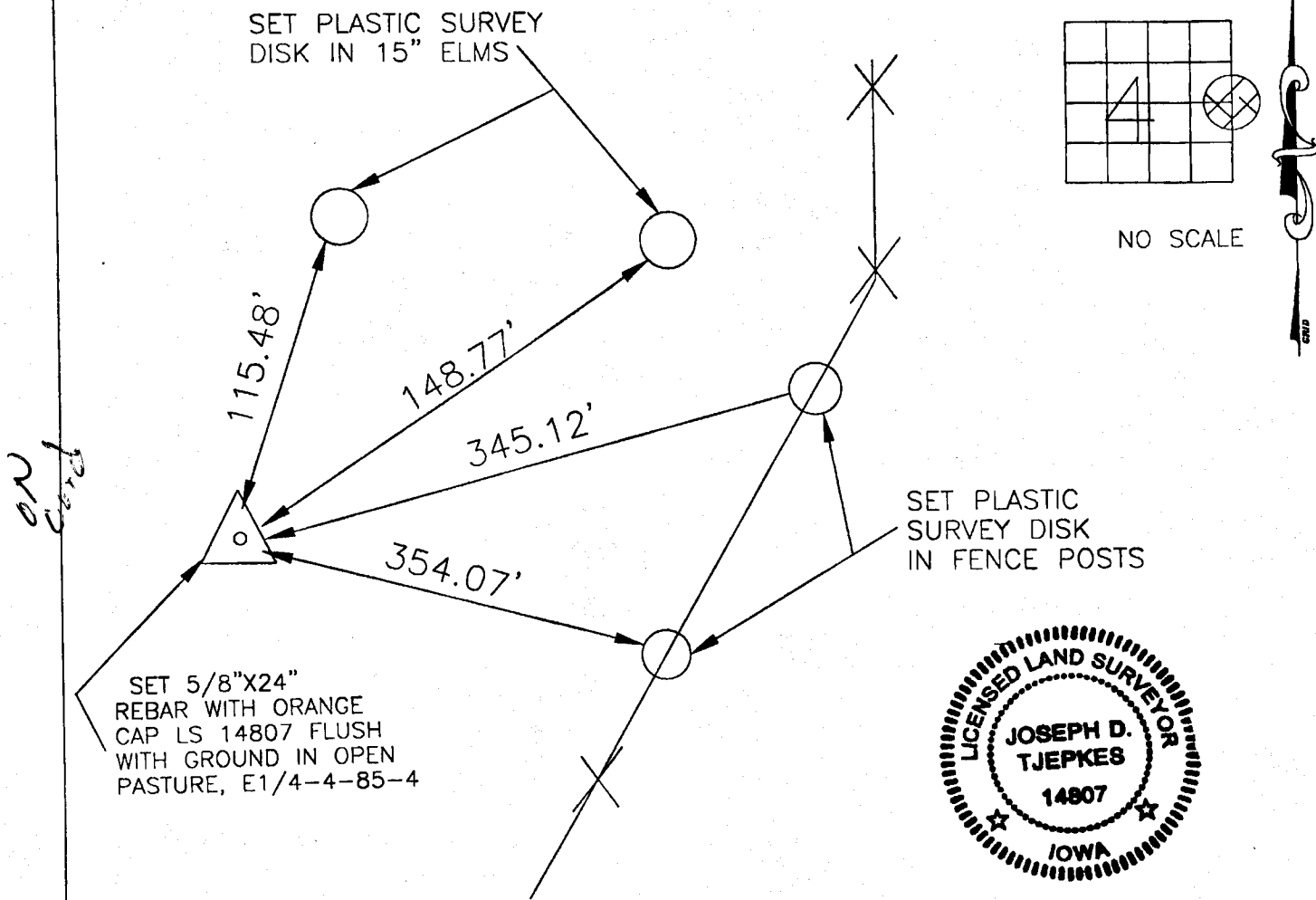
C-55

MARIE KRUTZFIELD
RECORDER NO FEE

JONES COUNTY ENGINEER, 19501 HWY. 64, ANAMOSA, IOWA

UNITED STATES PUBLIC LAND SURVEY CORNER CERTIFICATE

LAND SURVEY MONUMENTS SITUATED IN SECTION 4, TOWNSHIP 85
NORTH, RANGE 4 WEST OF THE 5TH P.M., JONES COUNTY, IOWA



PREVIOUSLY RECORDED IN BOOK N/A, PAGE N/A
 MONUMENT DESCRIPTION AND HOW ESTABLISHED SET 5/8"x
24" REBAR WITH ORANGE CAP LS 14807 IN OPEN PASTURE ON LINE BETWEEN THE
NORTHEAST CORNER OF SECTION 4 AND THE SOUTHEAST CORNER OF SECTION 4 AT A
PROPORTIONATE DISTANCE. NO APPARENT PHYSICAL EVIDENCE.

I hereby declare that this plat, survey or report was made by me or under my direct personal supervision and that I am a duly registered Land Surveyor under the laws of the State of Iowa.

Signed: *[Signature]* 3-10-2000

Joseph D. Tjepkes L.S. Iowa Reg. No. 14807
 My Registration Renewal Date is December 31, 2000

CORNERS TO BE INDEXED

CORNER	SECTION	TOWNSHIP	RANGE
EAST 1/4 COR.	4	85N	4W

JONES COUNTY ENGINEER
 19501 HWY. 64,
 ANAMOSA, IOWA