

Instrument #: 2016-2528
 09/13/2016 10:42:00 AM Total Pages: 1
 ZSC SECTION CORNER CERTIFICATE
 Recording Fee: \$7.00 Transfer Tax: \$0
 Sheri L. Jones, Recorder, Jones County Iowa



PREPARED BY: SCOTT SURVEY, INC. P.O. BOX 315 CENTER POINT IOWA 52213 319-540-5263

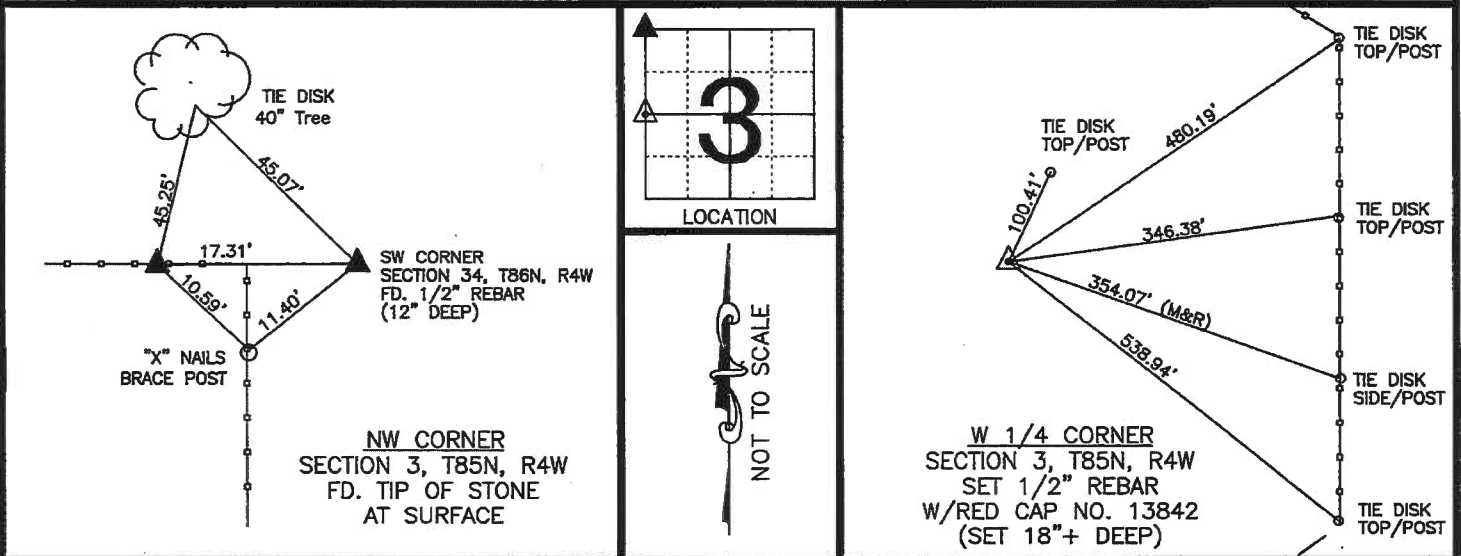
U.S. PUBLIC LAND SURVEY CORNER CERTIFICATE

FOR LAND SURVEY MONUMENTS SITUATED IN SECTION 3, TOWNSHIP 85 NORTH, RANGE 4 WEST, OF THE FIFTH PRINCIPAL MERIDIAN, JONES COUNTY, IOWA

REASON FOR PREPARING CERTIFICATE:

- A) THERE IS NO CERTIFICATE FOR THE CORNER ON FILE WITH THE RECORDER. (NW CORNER)
- B) CORNER TIES DIFFER FROM PREVIOUSLY RECORDED CERTIFICATE. (W 1/4 CORNER)

RECOVERY TIE DRAWING

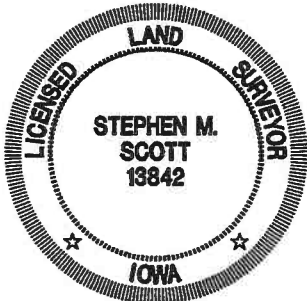


MONUMENT DESCRIPTION AND REMARKS :

FOUND MONUMENT ACCORDING TO CORNER CERTIFICATE FOR THE SW CORNER OF SECTION 34 WHICH CAN BE FOUND AT BOOK 310 PAGE 64, OFFICE OF THE RECORDER, JONES COUNTY, IOWA.

MONUMENT DESCRIPTION AND REMARKS :

SET MONUMENT BASED ON AN ACQUISITION PLAT FOUND AT DOCUMENT 2000-0836, OFFICE OF THE RECORDER, JONES COUNTY, IOWA. PREVIOUS CORNER CERT. FOUND AT DOCUMENT 2000-0830 REFERENCES A MONUMENT DESTROYED BY FARMING OPERATIONS.



I hereby certify that this land surveying document was prepared and the related survey work was performed by me or under my direct personal supervision and that I am a duly licensed Land Surveyor under the laws of the State of Iowa.

Stephen M. Scott, 2016
 STEPHEN M. SCOTT, L.S. Iowa Lic. No. 13842
 My license renewal date is December 31, 2016.

- GOVERNMENT CORNER
- 1/2" TIE PIN SET
- CENTERLINE
- EXISTING FENCE LINE
- R.O.W. LINE

U.S. PUBLIC LAND SURVEY CORNER CERTIFICATE

SECTION 3, T85N, R4W
 NW CORNER
 W 1/4 CORNER

PROJECT NO.
 1664001

SECTION CORNER CERTIFICATE

OF
 LAND SURVEY MONUMENTS SITUATED IN SECTION 34, TOWNSHIP 86 NORTH,
 RANGE 4 WEST, OF THE FIFTH PRINCIPAL MERIDIAN, JONES, COUNTY, IOWA.

PREVIOUSLY RECORDED IN BOOK _____ AT PAGE _____.

FOR RECORDER'S USE

REASON FOR PREPARING CERTIFICATE:

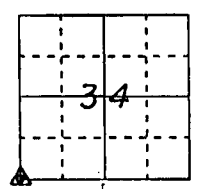
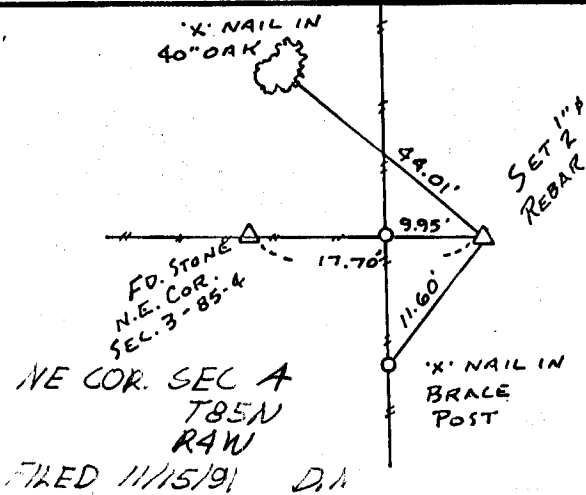
- A) THERE IS NO CERTIFICATE FOR THE CORNER ON FILE WITH THE RECORDER OF THE COUNTY IN WHICH THE CORNER IS LOCATED.
- B) CORNER POSITION DIFFERS FROM THAT SHOWN IN THE PUBLIC RECORDS OF THE COUNTY IN WHICH THE CORNER IS LOCATED.
- C) THE CORNER MONUMENT HAS BEEN REPLACED OR MODIFIED.
- D) THE REFERENCE TIES REFERRED TO IN AN EXISTING PUBLIC RECORD ARE INCORRECT.

MONUMENT DESCRIPTION AND REMARKS :

S.W. CORNER SECTION 34-86-4 SET 1/2" # REBAR WITH L.S.
 CAP # 8165 FLUSH WITH GROUND 9.95' EAST OF NORTH-
 SOUTH FC. LINE

RECOVERY TIE DRAWING

S.W. COR. SEC. 34-86-4



I, GLEN D. MEISNER, CERTIFY THAT THE CORNER LOCATION(S) SHOWN ON THIS RECORD WERE DETERMINED BY ME OR UNDER MY DIRECTION AND CONTROL AND THAT THIS U.S. PUBLIC LAND SURVEY MONUMENT RECORD IS CORRECT AND COMPLETE TO THE BEST OF MY KNOWLEDGE AND BELIEF.

Glen D. Meisner 11-6-91
 GLEN D. MEISNER L.S. NO 8165 DATE



DZ/MG/ML	▲ GOVERNMENT CORNER ○ 5/8" THE PIN SET — CENTERLINE - - - EXISTING FENCE LINE - - - R.O.W. LINE	SHEET TITLE: U.S. PUBLIC LAND SURVEY RECORD PROJECT TITLE: JOHN CAMPBELL SURVEY	HALL AND HALL ENGINEERS, INC. 226 29TH STREET DRIVE S.E. CEDAR RAPIDS, IOWA 52403 319-362-9548
	D W N R.W.B. C H K G.D.M. A P P	DATE 10-30-91 SCALE NONE	F NO B OT 23 P NO PROJ 4581