

# UNITED STATES PUBLIC LAND SURVEY CORNER CERTIFICATE

OF

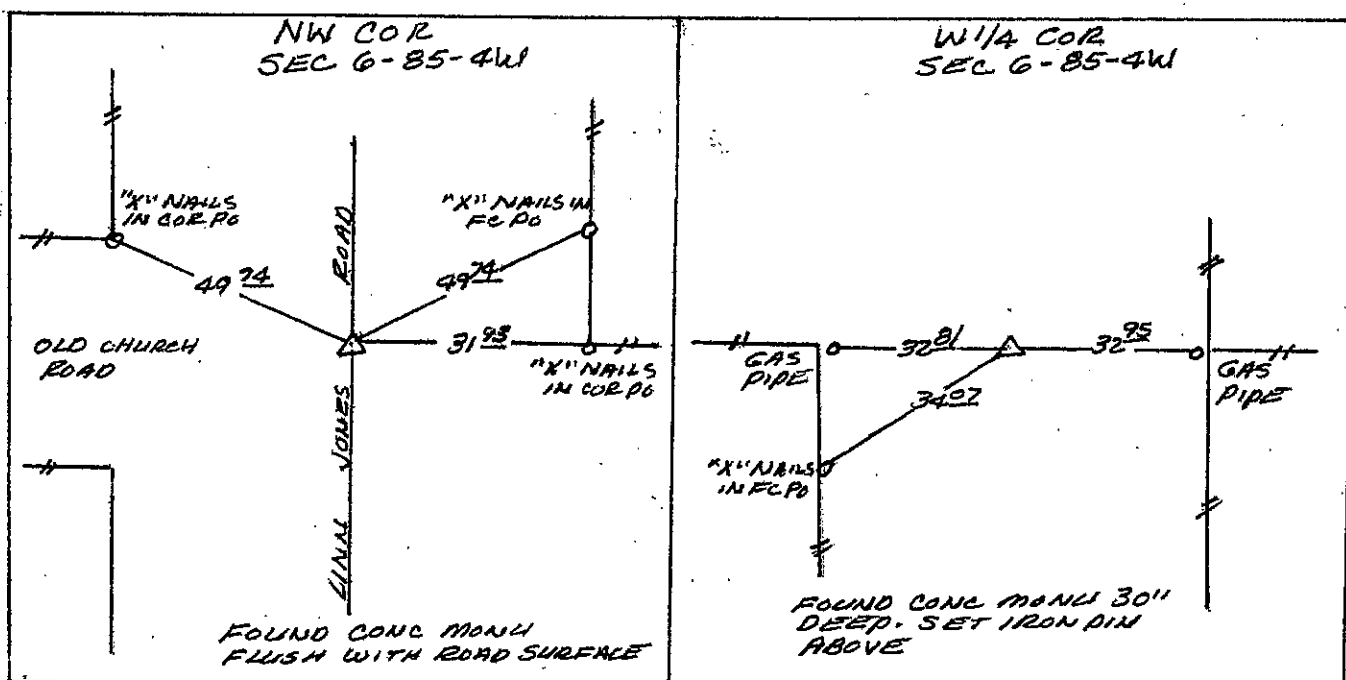
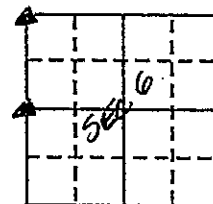
Land Survey Monuments situated in Section 6, Township 85 NORTH, Range 4 WEST, of the Fifth Principal Meridian, JONES County, Iowa. Previously recorded in DOES NOT APPLY in County Recorder's Office.  
(book, page, document number, etc.)

(Show reason for preparing this certificate, the evidence and detailed procedures used in establishing the corner positions and monumentation found or placed.)

Monument Description and Remarks: RE-REFERENCING CORNERS

### PLAN - VIEW

(Show a minimum of three reference ties to durable physical objects, relevant monuments and physical conditions that will enable recovery of the corner.)



I hereby certify that the survey work was completed and this certificate was prepared by me or under my direct personal supervision and that I am a duly registered land surveyor under the laws of the state of Iowa.

Signature: Larry R. McGuire  
Name typed or printed: LARRY R. MCGUIRE

Date: 7/24/91 Reg. No. 9019

List Corners to be Indexed			
Corners	Section	Twp	Range
NW COR	6	85	4W
W 1/4 COR	6	85	4W

213

FILED  
RECORDERS OFFICE  
JONES COUNTY IOWA

91 JUL 25 AM 8:25

BOOK 305 PAGE 178  
DORIS JEANNE HERRIN  
RECORDER  
500-11

SEAL

