

2002 4664

85407j-121602
85407i-121602

FILED
RECORDERS OFFICE
JONES COUNTY IOWA

02 DEC 16 PM 4:18

MARIE KRUTZFIELD
RECORDER 6.00 pd

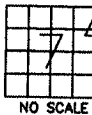
J.D. TJEKES, LS. #14807 23428 RIDGE ROAD, ANAMOSA, IOWA 52205 (319) 462-6067

UNITED STATES PUBLIC LAND SURVEY CORNER CERTIFICATE

LAND SURVEY MONUMENTS SITUATED IN SECTION 7, TOWNSHIP 85
NORTH, RANGE 4 WEST OF THE 5TH P.M., JONES COUNTY, IOWA

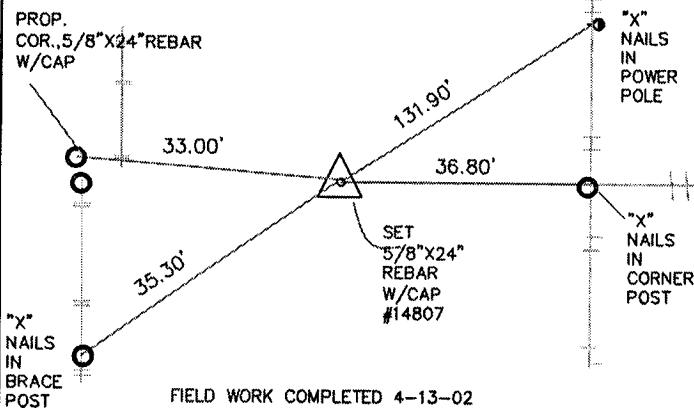
CORNERS TO BE INDEXED

CORNER SECTION TOWNSHIP RANGE
NESENE 7 85 4



NO SCALE

OFFICE FILE NO.
85407j_121202.jpg

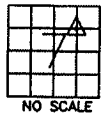


FIELD WORK COMPLETED 4-13-02

PREVIOUSLY RECORDED IN BOOK NA, PAGE NA
MONUMENT DESCRIPTION AND HOW ESTABLISHED
FROM BREAKDOWN OF SECTION 7 SET 5/8" REBAR
W/CAP #14807 IN FREMONT ROAD

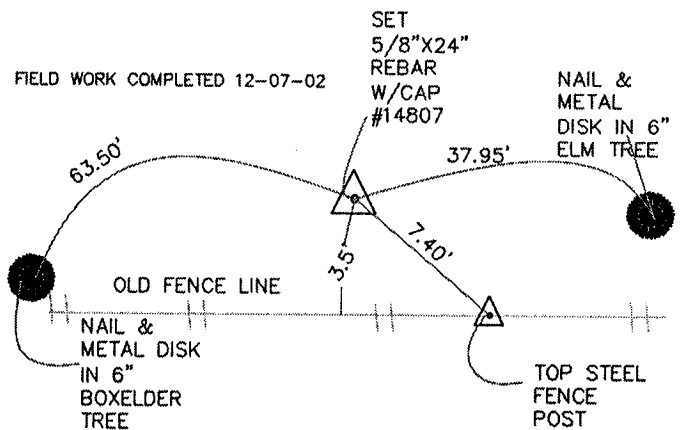
CORNERS TO BE INDEXED

CORNER SECTION TOWNSHIP RANGE
SW NE NE 7 85N 4W



NO SCALE

OFFICE FILE NO.
85407i_121202.jpg

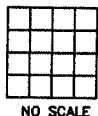


FIELD WORK COMPLETED 12-07-02

PREVIOUSLY RECORDED IN BOOK NA, PAGE NA
MONUMENT DESCRIPTION AND HOW ESTABLISHED
FROM BREAKDOWN OF SECTION 7, SET 5/8" REBAR
W/CAP #14807.

CORNERS TO BE INDEXED

CORNER SECTION TOWNSHIP RANGE



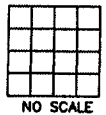
NO SCALE

OFFICE FILE NO.

PREVIOUSLY RECORDED IN BOOK _____, PAGE _____
MONUMENT DESCRIPTION AND HOW ESTABLISHED _____

CORNERS TO BE INDEXED

CORNER SECTION TOWNSHIP RANGE



NO SCALE

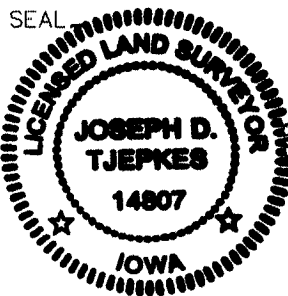
OFFICE FILE NO.

PREVIOUSLY RECORDED IN BOOK _____, PAGE _____
MONUMENT DESCRIPTION AND HOW ESTABLISHED _____

I hereby declare that this plat, survey or report was made by me or under my direct personal supervision and that I am a duly registered Land Surveyor under the laws of the State of Iowa.

Signed [Signature] 12.16.02

Joseph D. Tjepkes L.S. Iowa Reg. No. 14807
My Registration Renewal Date is December 31, 2002



J.D. TJEKES LS # 14807
23428 RIDGE ROAD
ANAMOSA, IOWA, 52205
(319) 462-6067