

Marie Krutzfield, Recorder
 Jones County, Iowa

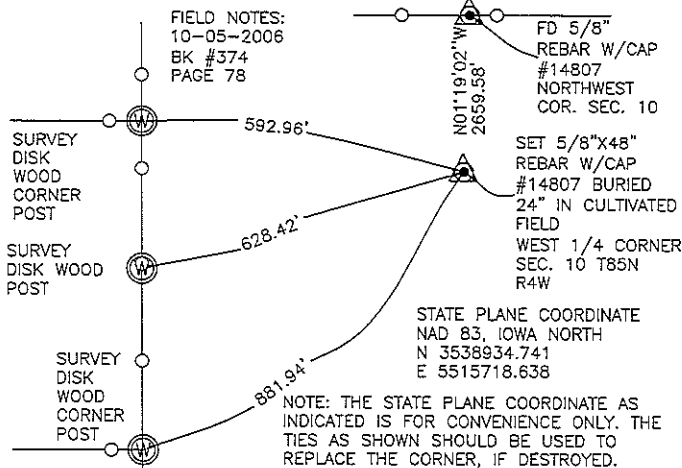
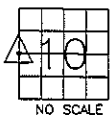
J.D. TJEPKES, LS. JONES COUNTY ENGINEER'S OFFICE, 19501 HWY. 64, ANAMOSA, IOWA, 52205 (319)462-3785

UNITED STATES PUBLIC LAND
 SURVEY CORNER CERTIFICATE

LAND SURVEY MONUMENTS SITUATED IN SECTION 10, TOWNSHIP 85
 NORTH, RANGE 4 WEST OF THE 5TH P.M., JONES COUNTY, IOWA

CORNERS TO BE INDEXED

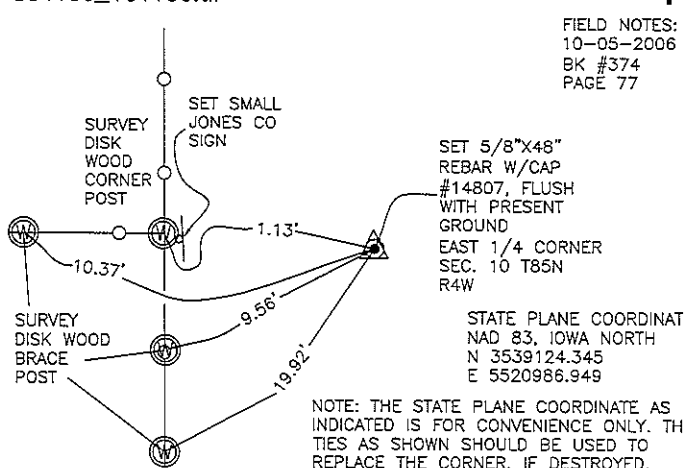
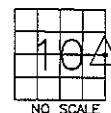
CORNER SECTION TOWNSHIP RANGE
 W 1/4 10 85N 4W
 OFFICE FILE NO.
 85409e_101106.tif



PREVIOUSLY RECORDED IN BOOK NA, PAGE NA
 MONUMENT DESCRIPTION AND HOW ESTABLISHED
 SET 5/8"X48" REBAR W/CAP #14807 AND SMALL MAGNET IN OPEN CULTIVATED FIELD, BURIED 24", ON LINE AND MIDWAY BETWEEN FD SW CORNER AND FD NW CORNER SECTION 10 T85N R4W. TIES AS INDICATED FOR THE WEST QUARTER CORNER SECTION 10 T85N R4W.

CORNERS TO BE INDEXED

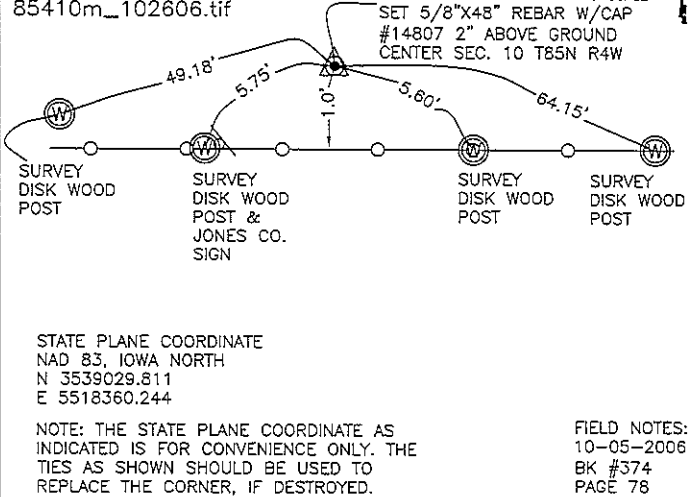
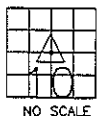
CORNER SECTION TOWNSHIP RANGE
 E 1/4 10 85N 4W
 OFFICE FILE NO.
 85410e_101106.tif



PREVIOUSLY RECORDED IN BOOK NA, PAGE NA
 MONUMENT DESCRIPTION AND HOW ESTABLISHED
 PER PHYSICAL EVIDENCE AT OLD FENCE CORNER, SET 5/8"X48" REBAR W/CAP #14807 FLUSH WITH PRESENT GROUND. TIES AS INDICATED FOR EAST 1/4 CORNER SECTION 10 T85N R4W.

CORNERS TO BE INDEXED

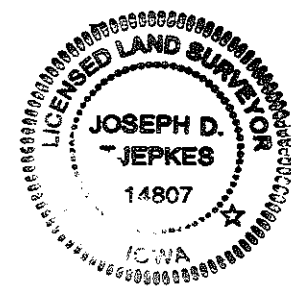
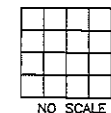
CORNER SECTION TOWNSHIP RANGE
 CENTER SEC. 10 85N 4W
 OFFICE FILE NO.
 85410m_102606.tif



PREVIOUSLY RECORDED IN BOOK NA, PAGE NA
 MONUMENT DESCRIPTION AND HOW ESTABLISHED
 PER BREAKDOWN OF SECTION 10, SET 5/8" X 48" REBAR WITH CAP #14807, 2" ABOVE PRESENT GROUND AND 1' NORTH OF PRESENT EAST - WEST FENCELINE. TIES AS INDICATED FOR CENTER SECTION 10 T85N R4W.

CORNERS TO BE INDEXED

CORNER SECTION TOWNSHIP RANGE
 OFFICE FILE NO.

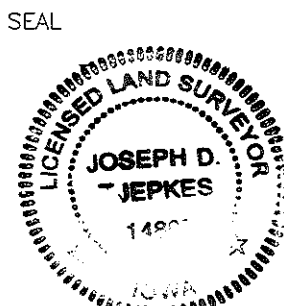


PREVIOUSLY RECORDED IN BOOK _____, PAGE _____
 MONUMENT DESCRIPTION AND HOW ESTABLISHED _____

I hereby declare that this plat, survey or report was made by me or under my direct personal supervision and that I am a duly registered Land Surveyor under the laws of the State of Iowa.

Signed: *Joseph D. Tjepkes* 10-27-06

Joseph D. Tjepkes L.S. Iowa Reg. No. 14807
 My Registration Renewal Date is December 31, 2006



J.D. TJEPKES LS 14807
 JONES COUNTY
 ENGINEER'S OFFICE

19501 HWY. 64,
 ANAMOSA, IOWA,
 52205 (319)462-3785

THIS IS NOT A CERTIFICATION

JONES COUNTY ENGINEER'S OFFICE, 19501 HWY. 64, ANAMOSA, IOWA, 52205 (319)462-3785

UNITED STATES PUBLIC LAND SURVEY CORNER CERTIFICATE

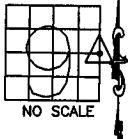
LAND SURVEY MONUMENTS SITUATED IN SECTION 9, TOWNSHIP 85 NORTH, RANGE 4 WEST OF THE 5TH P.M., JONES COUNTY, IOWA

CORNERS TO BE INDEXED

CORNER SECTION TOWNSHIP RANGE
E-QUARTER 9 85N 4W

OFFICE FILE NO.

854090_062204.tif



1980

DUG HOLE 100' ON EACH SIDE OF SECTION LINE 1/4-FENCE. ?

REF:
JONES COUNTY SURVEY CREW. (1935)
CORNER STONE BOOK 11, PAGE 37

✓
✓

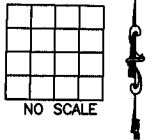
PREVIOUSLY RECORDED IN BOOK _____, PAGE _____
MONUMENT DESCRIPTION AND HOW ESTABLISHED _____

854090-012405.tif

CORNERS TO BE INDEXED

CORNER SECTION TOWNSHIP RANGE

OFFICE FILE NO.

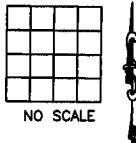


PREVIOUSLY RECORDED IN BOOK _____, PAGE _____
MONUMENT DESCRIPTION AND HOW ESTABLISHED _____

CORNERS TO BE INDEXED

CORNER SECTION TOWNSHIP RANGE

OFFICE FILE NO.

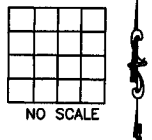


PREVIOUSLY RECORDED IN BOOK _____, PAGE _____
MONUMENT DESCRIPTION AND HOW ESTABLISHED _____

CORNERS TO BE INDEXED

CORNER SECTION TOWNSHIP RANGE

OFFICE FILE NO.



PREVIOUSLY RECORDED IN BOOK _____, PAGE _____
MONUMENT DESCRIPTION AND HOW ESTABLISHED _____

~~I hereby declare that this plat, survey or report was made by me or under my direct personal supervision and that I am a duly registered Land Surveyor under the laws of the State of Iowa.~~

Signed:

SEAL

JONES COUNTY ENGINEER'S OFFICE

19501 HWY. 64,
ANAMOSA, IOWA,
52205 (319)462-3785