

SECTION CORNER CERTIFICATE

OF
 LAND SURVEY MONUMENTS SITUATED IN SECTION 10, TOWNSHIP 86 NORTH,
 RANGE 4 WEST, OF THE FIFTH PRINCIPAL MERIDIAN, JONES, COUNTY, IOWA.

PREVIOUSLY RECORDED IN BOOK AT PAGE

FOR RECORDER'S USE

REASON FOR PREPARING CERTIFICATE:

- A) THERE IS NO CERTIFICATE FOR THE CORNER ON FILE WITH THE RECORDER OF THE COUNTY IN WHICH THE CORNER IS LOCATED.
- B) CORNER POSITION DIFFERS FROM THAT SHOWN IN THE PUBLIC RECORDS OF THE COUNTY IN WHICH THE CORNER IS LOCATED.
- C) THE CORNER MONUMENT HAS BEEN REPLACED OR MODIFIED.
- D) THE REFERENCE TIES REFERRED TO IN AN EXISTING PUBLIC RECORD ARE INCORRECT.

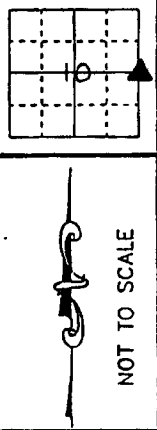
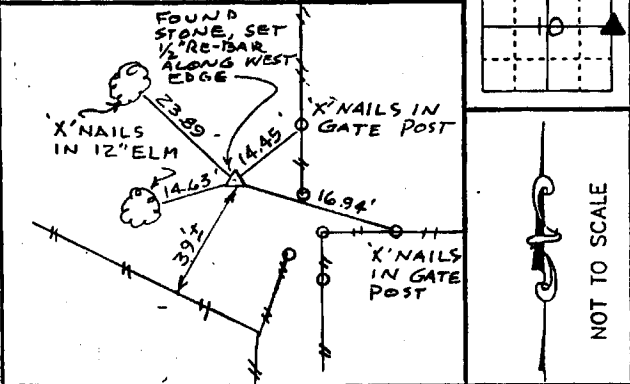
1999 3183
 FILED
 RECORDERS OFFICE
 JONES COUNTY IOWA
 99 SEP -8 AM 10:15
 MARIE KRUTZFIELD
 RECORDER *6.00pd*

MONUMENT DESCRIPTION AND REMARKS :

E 1/4 COR. - FOUND STONE, SET 1/2" RE-BAR ALONG WEST
EDGE - STONE 7" X 11" X 16"

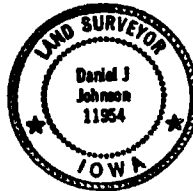
RECOVERY TIE DRAWING

E 1/4 COR. 10-86-4



I, DANIEL J. JOHNSON, CERTIFY THAT THE CORNER LOCATION(S) SHOWN ON THIS RECORD WERE DETERMINED BY ME OR UNDER MY DIRECTION AND CONTROL AND THAT THIS U.S. PUBLIC LAND SURVEY MONUMENT RECORD IS CORRECT AND COMPLETE TO THE BEST OF MY KNOWLEDGE AND BELIEF.

Daniel J. Johnson 9-8-99
 DANIEL J. JOHNSON L.S. NO 11954 DATE



LEGEND
 ▲ GOVERNMENT CORNER
 ○ 5/8" IRON PIN SET
 --- CENTERLINE
 - - - EXISTING FENCE LINE
 - - - R.O.W. LINE

SHEET TITLE: U.S. PUBLIC LAND SURVEY RECORD
PROJECT TITLE: JONES COUNTY ENGINEER

HALL AND HALL ENGINEERS, INC.
 209 28TH STREET DRIVE N.E.
 CEDAR RAPIDS, IOWA 52402
 319-362-9548

D W S.

X

A

DATE 4-5-95

SCALE

P. NO.

P. NO.

5473

864100-090899