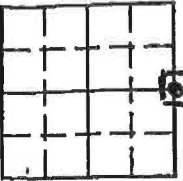


Instrument #: 2025-3175 Total Pages: 1
12/15/2025 09:54:21 AM
ZSC SECTION CORNER CERTIFICATE
Recording Fee: \$7.00 Transfer Tax: \$0
Sheri L. Jones, Recorder, Jones County Iowa

Prepared by: Richard M. Kordick, P.E.J.S., 689 185th Street, Tipton, Iowa 52772 Phone: 563-432-6424

U.S. PUBLIC LAND SURVEY CORNER CERTIFICATE



N 1/4 CORNER

Section 10

Township 86 N

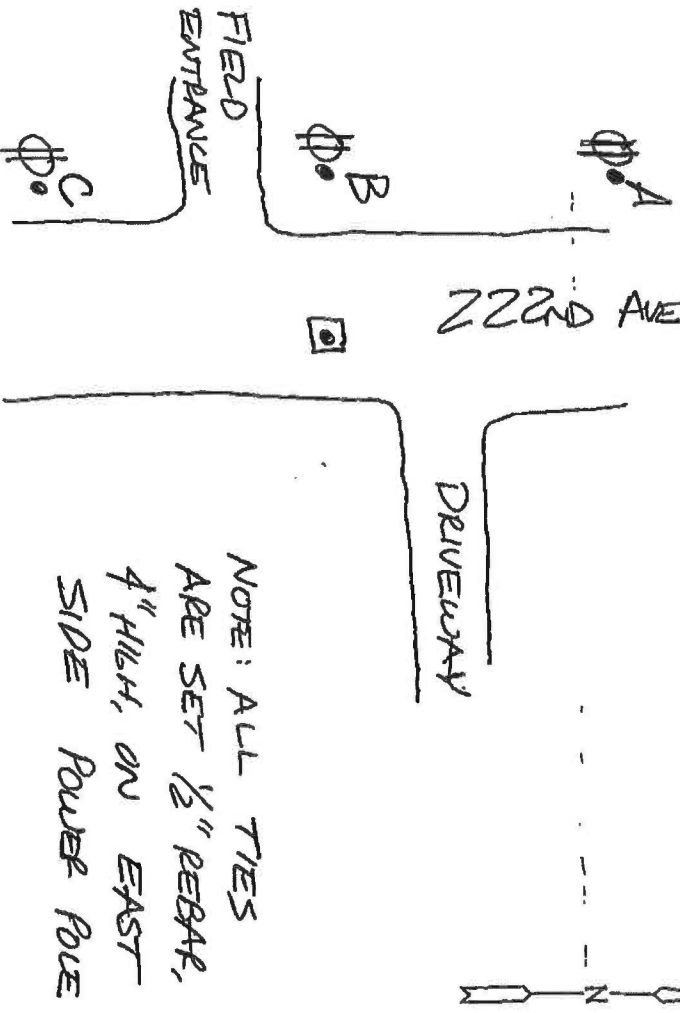
Range 4 W

Distances:

A = 352.27'

B = 32.57'

C = 301.64'



Plan-View No Scale

Reason for corner tie: (Indicated with check boxes)

☒ A) There is no certificate for the corner on file with the recorder.

☐ B) Corner position differs from previously recorded certificate recorded in book, page, page

☐ C) Corner monument was replaced or modified.

☐ D) Reference ties in previously recorded certificate recorded in book, page, page are

incorrect or missing.

Field search performed as follows: (Indicated with check boxes)

☒ Field search was performed with a ☒ metal detector, ☒ probing, and ☒ excavation.

☐ Nothing was found.

~~County Engineer's Office~~ ~~Old Corner Ties~~ called for a 5/8" REBAR at this corner.

Plat in ~~RECORDED~~ Office Bk Q - Page 203 called for a 5/8" REBAR

at this corner. Office Bk Q - Page 208 called for a 5/8" REBAR

Plat in ~~RECORDED~~ Office Bk Q - Page 242 called for a 5/8" REBAR

at this corner. Office Bk - Page called for a

Plat in Office Bk - Page called for a

A 5/8" REBAR, 10" DEEP, WAS FOUND AND USED AS CORNER.



I hereby certify that this land surveying document was prepared and the related survey work was performed by me or under my direct personal supervision and that I am a duly licensed Professional Land Surveyor under the laws of the State of Iowa.

Richard M. Kordick 12/4/2025
License number 13657 date

My license renewal date is December 31, 2025.
Pages or sheets covered by this seal: 1 of 1

LEGEND:
☒ Section Corner as noted
☒ Power Pole
● 1/2" rebar set 4" high, tie
⊗ Set flag nail in top of post, tie
--- Section line
--- Centerline
--- Existing Fence
--- Recorded Dist.

Kordick Surveying & Engineering
689 185th Street
Tipton, Iowa 52772
563-432-6424

U.S. Public Land Survey Corner Certificate
JONES County

Field Bk 25049
Date 12-9-25
Job No. 25049
Sheet 1 of 1

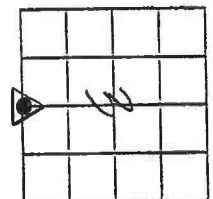
UNITED STATES PUBLIC LAND SURVEY CORNER CERTIFICATE

LAND SURVEY MONUMENTS SITUATED IN SECTION 3, TOWNSHIP 8, NORTH
RANGE 4 WEST OF THE 5TH P.M., Jones COUNTY, IOWA.

NO SCALE

N

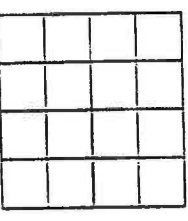
5/4 Jones



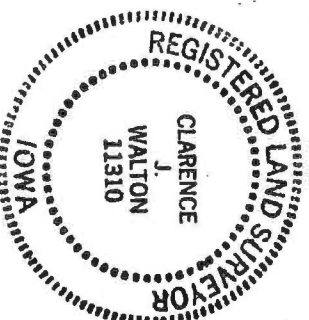
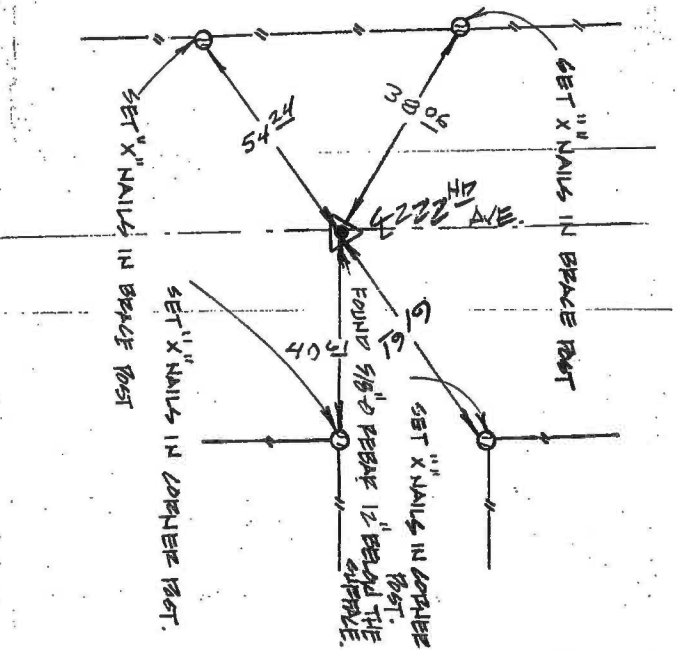
6 1/2 Cord

NO SCALE

N



Castle Grove



PREVIOUSLY RECORDED IN BOOK _____ PAGE _____

MONUMENT DESCRIPTION AND HOW ESTABLISHED Found 5/8\"/>
A BEAR & THE 5/4 JONES OF SEC. 3, T4N. 8N. R4W.
5TH P.M. JONES COUNTY.

PREVIOUSLY RECORDED IN BOOK _____ PAGE _____

MONUMENT DESCRIPTION AND HOW ESTABLISHED _____

CORNERS TO BE INDEXED

CORNER 5/4 SECTION 3 TOWNSHIP 8N RANGE 4W

BRAIN ENGINEERING, INC.

777 10TH STREET
MARION, IOWA 52302
(319) 373-1318

I hereby declare that this plat, survey or report
was made by me or under my direct personal
supervision and that I am a duly registered
Land Surveyor under the laws of the State of Iowa.
Signed Clarence J. Walton 3/28/97
Date

Clarence J. Walton L.S. Iowa Reg No. 11310
My Registration Renewal Date Is December 31, 1997