

SECTION CORNER CERTIFICATE

OF
 LAND SURVEY MONUMENTS SITUATED IN SECTION 12, TOWNSHIP 86 NORTH,
 RANGE 4 WEST, OF THE FIFTH PRINCIPAL MERIDIAN, JONES, COUNTY, IOWA.

PREVIOUSLY RECORDED IN BOOK _____ AT PAGE _____.

FOR RECORDER'S USE

REASON FOR PREPARING CERTIFICATE:

- A) THERE IS NO CERTIFICATE FOR THE CORNER ON FILE WITH THE RECORDER OF THE COUNTY IN WHICH THE CORNER IS LOCATED.
- B) CORNER POSITION DIFFERS FROM THAT SHOWN IN THE PUBLIC RECORDS OF THE COUNTY IN WHICH THE CORNER IS LOCATED.
- C) THE CORNER MONUMENT HAS BEEN REPLACED OR MODIFIED.
- D) THE REFERENCE TIES REFERRED TO IN AN EXISTING PUBLIC RECORD ARE INCORRECT.

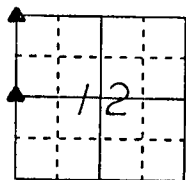
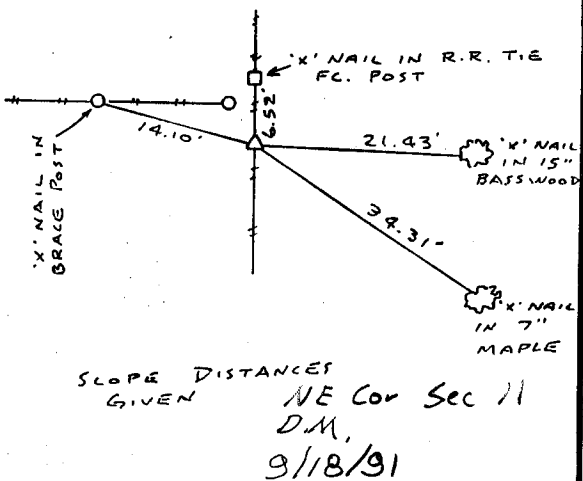
MONUMENT DESCRIPTION AND REMARKS :

N. W. Cor. SECTION 12, T86N, R4W; SET 1/2" # REBAR WITH L.S.
 CAP # 8165 FLUSH WITH GROUND

W. 1/4 Cor. SECTION 12, T86N, R4W; SET 1/2" # REBAR WITH L.S.
 CAP # 8165 FLUSH WITH GROUND

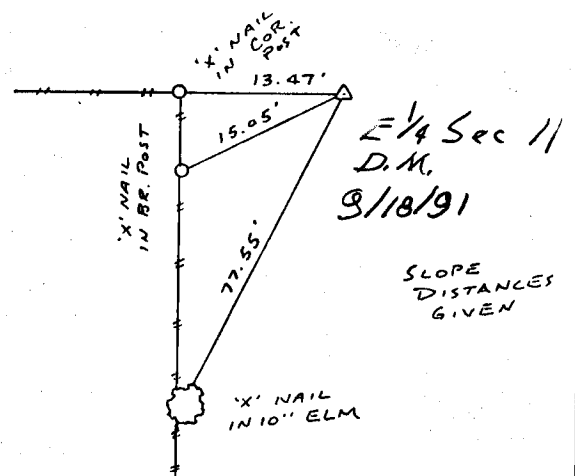
RECOVERY TIE DRAWING

N. W. Cor. SEC. 12-86-4



NOT TO SCALE

W. 1/4 Cor. SEC. 12-86-4



I, GLEN D. MEISNER, - CERTIFY THAT THE CORNER LOCATION(S) SHOWN ON THIS RECORD WERE DETERMINED BY ME OR UNDER MY DIRECTION AND CONTROL AND THAT THIS U.S. PUBLIC LAND SURVEY MONUMENT RECORD IS CORRECT AND COMPLETE TO THE BEST OF MY KNOWLEDGE AND BELIEF.

Glen D. Meisner 9-10-91
 GLEN D. MEISNER L.S. NO 8165 DATE



DZMORL	GOVERNMENT CORNER 5/8" THE PIN SET CENTERLINE EXISTING FENCE LINE R.O.W. LINE	SHEET TITLE: U.S. PUBLIC LAND SURVEY RECORD PROJECT TITLE: JONES COUNTY	HALL AND HALL ENGINEERS, INC. 226 29TH STREET DRIVE S.E. CEDAR RAPIDS, IOWA 52403 319-362-9548
	DWN R.W.B. KIC G.D.M. APP	DATE: 8-27-91 SCALE: NONE	

86411p-091091 - 86411n-091091