

Instrument #: 2020-0182
 01/20/2020 02:10:39 PM Total Pages: 1
 ZSC SECTION CORNER CERTIFICATE
 Recording Fee: \$7.00 Transfer Tax: \$0
 Sheri L. Jones, Recorder, Jones County Iowa



Prepared by *Wm. Burger Land Surveyor* 510 3rd Street West Court, Worthington, Iowa 52078 Phone 563 - 855 2028

UNITED STATES PUBLIC LAND SURVEY CORNER CERTIFICATE

Land Survey Monuments situated in Section 12, Township 86N, Range 4W, of the Fifth Principal Meridian, Jones County, Iowa. Previously recorded in N/A in the Office of the County Recorder

Monument Description and Remarks: (No Corner Certificates found at the County Recorder's Office)

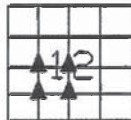
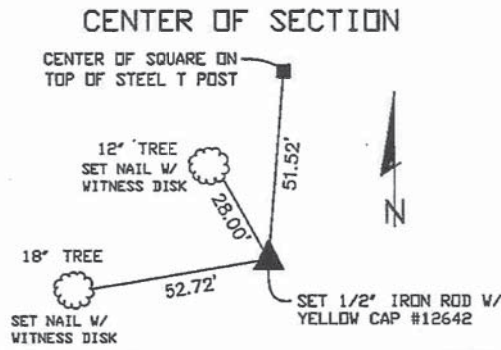
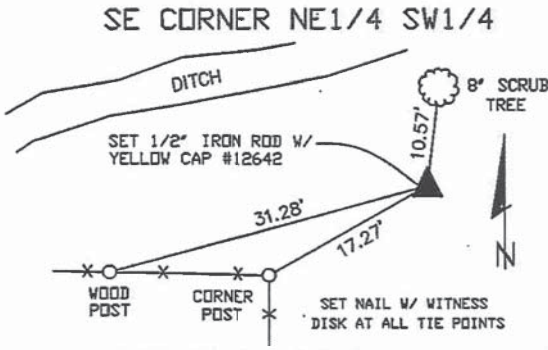
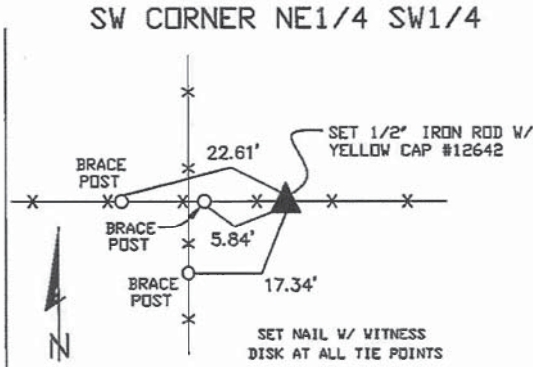
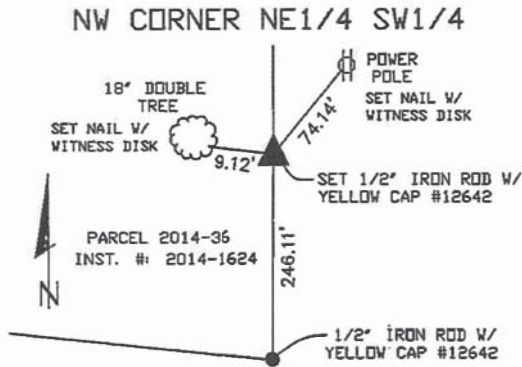
NW CORNER NE1/4 SW1/4 - SET 1/2' IRON ROD WITH YELLOW CAP #12642 - SET ON LINE AND MIDWAY BETWEEN THE CENTER OF SECTION AND THE W1/4 CORNER

SW CORNER NE1/4 SW1/4 - SET 1/2' IRON ROD WITH YELLOW CAP #12642 - RUN A STRAIGHT LINE FROM NW CORNER NE1/4 SW1/4 TO THE SE CORNER SW1/4 SW1/4 AND INTERSECTED WITH EAST - WEST FENCE LINE

SE CORNER NE1/4 SW1/4 - SET 1/2' IRON ROD W/ YELLOW CAP #12642 - SET ON LINE AND MIDWAY BETWEEN THE CENTER OF SECTION AND THE S1/4 CORNER

CENTER OF SECTION - SET 1/2' IRON ROD W/ YELLOW CAP #12642 - RUN STRAIGHT LINES FROM OPPOSITE 1/4 CORNERS AND SET AT THE POINT OF INTERSECTION

PLAN VIEW



SEC. 12, TWP. 86N, RANGE 4W

CORNERS TO BE INDEXED

NW CORNER NE1/4 SW1/4	12	86N	4W
SW CORNER NE1/4 SW1/4	12	86N	4W
SE CORNER NE1/4 SW1/4	12	86N	4W
CENTER OF SECTION	12	86N	4W



I hereby certify that this land surveying document was prepared and related survey work was performed by me or under my direct personal supervision and that I am a duly licensed Land Surveyor under the laws of the State of Iowa.

William H. Burger 1/20/2020
 William H. Burger Date

License number 12642
 My license renewal date is December 31, 2020
 Pages or Sheets covered by this seal: Sheet 1 of 1