

2003 513

FILED  
RECORDERS OFFICE  
JONES COUNTY IOWA

2003 OCT 17 PM 4:00

MARIE KRUTZFIELD  
RECORDER 11.00 Pd

J.D. TJEKES, LS. 14807, 23428 RIDGE ROAD, ANAMOSA, IOWA, 52205 (319-462-6067)

# UNITED STATES PUBLIC LAND SURVEY CORNER CERTIFICATE

LAND SURVEY MONUMENTS SITUATED IN SECTION 13, TOWNSHIP 86  
NORTH, RANGE 4 WEST OF THE 5TH P.M., JONES COUNTY, IOWA

**CORNERS TO BE INDEXED**

CORNER SECTION TOWNSHIP RANGE  
S1/4 13 86N 4W  
OFFICE FILE NO. 864240-101703

FD. ROUND STEEL POST IN CONCRETE

SET 5/8"X24" REBAR W/YELLOW CAP #14807

CAP & NAIL TOP WOOD POST

CAP & NAIL NORTH SIDE OF WOOD POST

CAP & NAIL TOP WOOD POST

FIELD NOTES:  
BK 2003  
P.99  
8-02-03

PREVIOUSLY RECORDED IN BOOK NA, PAGE NA  
MONUMENT DESCRIPTION AND HOW ESTABLISHED  
PER PHYSICAL EVIDENCE, SET 5/8"X24" REBAR W/YELLOW CAP #14807 AT FENCE CORNER. FENCES WEST & SOUTH. TIES AS INDICATED.

**CORNERS TO BE INDEXED**

CORNER SECTION TOWNSHIP RANGE  
E1/4 13 86N 4W  
OFFICE FILE NO. 864130-101703

SET NAIL W/METAL DISK BRACE POST

FD 1/2" IRON PIN W/YELLOW CAP #11310 (BRAIN) FLUSH WITH GROUND

FD "X" NAILS SET METAL DISK BRACE POST

FD "X" NAILS SET METAL DISK END POST

SET NAIL W/METAL DISK BRACE POST

FD "X" NAILS END POST

FIELD NOTES:  
BK 2003  
P.99  
8-02-03

PREVIOUSLY RECORDED IN BOOK NA, PAGE NA  
MONUMENT DESCRIPTION AND HOW ESTABLISHED  
FD 1/2" IRON PIN W/YELLOW CAP # 11310 AT FENCE CORNER FLUSH WITH GROUND. TIED AS INDICATED.

**CORNERS TO BE INDEXED**

CORNER SECTION TOWNSHIP RANGE  
SE 13 86N 4W  
OFFICE FILE NO. 864240-101703

E1/4 SEC. 13 IRON PIN W/YELLOW CAP #11310

SE CORNER PARCEL 2003-114 5/8" REBAR W/CAP #14807

SW CORNER PARCEL 2003-114 5/8" REBAR W/CAP #14807

PARCEL NO. 2003-113 S1/4 13 5/8" REBAR W/CAP #14807

SE CORNER PARCEL 2003-113 5/8" REBAR W/CAP #14807

5/8"X24" REBAR W/YELLOW CAP #14807, SMALL SIGN AND MAGNET

FIELD NOTES:  
BK 2003  
P.100  
8-02-03

PREVIOUSLY RECORDED IN BOOK NA, PAGE NA  
MONUMENT DESCRIPTION AND HOW ESTABLISHED  
PER PROPORTIONATE MEASUREMENT AND ON LINE WITH FOUND E1/4 COR. SECTION 24 AND FD. E1/4 COR. SECTION 13, SET 5/8"X24" REBAR W/YELLOW CAP #14807 WITH SMALL SIGN AND MAGNET FLUSH WITH GROUND IN PASTURE AREA. TIES AS INDICATED.

**CORNERS TO BE INDEXED**

CORNER SECTION TOWNSHIP RANGE  
OFFICE FILE NO. \_\_\_\_\_

5/8"X24" REBAR W/YELLOW CAP #14807, SMALL SIGN AND MAGNET

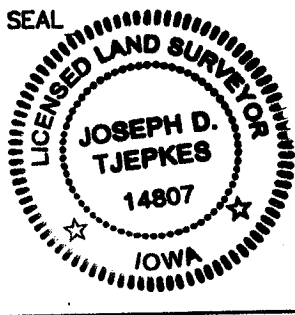
FIELD NOTES:  
BK 2003  
P.100  
8-02-03

PREVIOUSLY RECORDED IN BOOK \_\_\_\_\_, PAGE \_\_\_\_\_  
MONUMENT DESCRIPTION AND HOW ESTABLISHED \_\_\_\_\_

I hereby declare that this plat, survey or report was made by me or under my direct personal supervision and that I am a duly registered Land Surveyor under the laws of the State of Iowa.

Signed: [Signature] 10-17-03

Joseph D. Tjepkes L.S. Iowa Reg. No. 14807  
My Registration Renewal Date is December 31, 2004



J.D. TJEKES LS 14807  
23428 RIDGE ROAD  
ANAMOSA, IOWA,  
52205 (319)462-6067

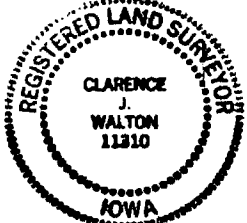
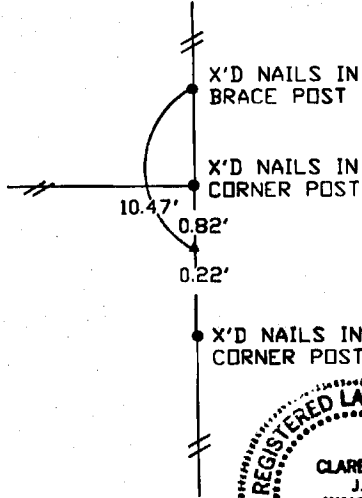
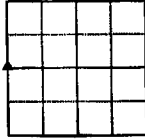
# UNITED STATES PUBLIC LAND SURVEY CORNER CERTIFICATE

LAND SURVEY MONUMENTS SITUATED IN SECTION 18, TOWNSHIP 86 NORTH  
RANGE 3 WEST OF THE 5TH P.M., JONES COUNTY, IOWA.

NO SCALE



W 1/4

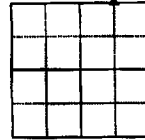


PREVIOUSLY RECORDED IN BOOK \_\_\_\_\_ PAGE \_\_\_\_\_  
 MONUMENT DESCRIPTION AND HOW ESTABLISHED \_\_\_\_\_  
SET 1/2" REBAR WITH YELLOW PLASTIC CAP WITH #11310  
AT INTERSECTION OF FENCE LINE.

NO SCALE



NW NE 1/4 NE 1/4

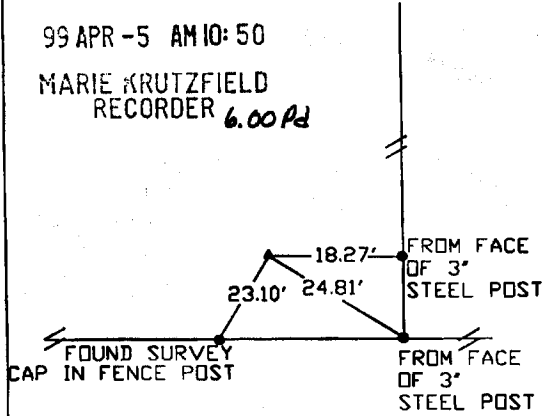


**1999 1209**

FILED  
 RECORDERS OFFICE  
 JONES COUNTY IOWA

99 APR -5 AM 10:50

MARIE KRUTZFIELD  
 RECORDER *6.00 Pd*



PREVIOUSLY RECORDED IN BOOK \_\_\_\_\_ PAGE \_\_\_\_\_  
 MONUMENT DESCRIPTION AND HOW ESTABLISHED \_\_\_\_\_  
FOUND 1/2" REBAR 2" DEEP FROM PREVIOUS SURVEY.

I hereby declare that this plat, survey or report was made by me or under my direct personal supervision and that I am a duly registered Land Surveyor under the laws of the State of Iowa.  
 Signed Clarence J. Walton Date 4/2/99  
 Clarence J. Walton L.S. Iowa Reg No. 11310  
 My Registration Renewal Date is December 31, 1999

CORNERS TO BE INDEXED			
CORNER	SECTION	TOWNSHIP	RANGE
W 1/4	18	T86N	R3W
NW NE 1/4	18	T86N	R3W
NE 1/4			

**BRAIN ENGINEERING, INC.**  
 777 10TH STREET  
 MARION, IOWA 52302  
 (319) 373-1318

23289-10

86318d-040299

864210-040299