

Instrument #: 2023-2198
 09/19/2023 08:45:28 AM Total Pages: 1
 ZSC SECTION CORNER CERTIFICATE
 Recording Fee: \$7.00 Transfer Tax: \$0
 Sheri L. Jones, Recorder, Jones County Iowa



—PREPARED BY AND RETURN TO: MMS CONSULTANTS, INC. 1917 S. GILBERT ST. IOWA CITY, IOWA 52240 (319)351-8282—

U.S. PUBLIC LAND SURVEY CORNER CERTIFICATE

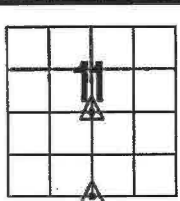
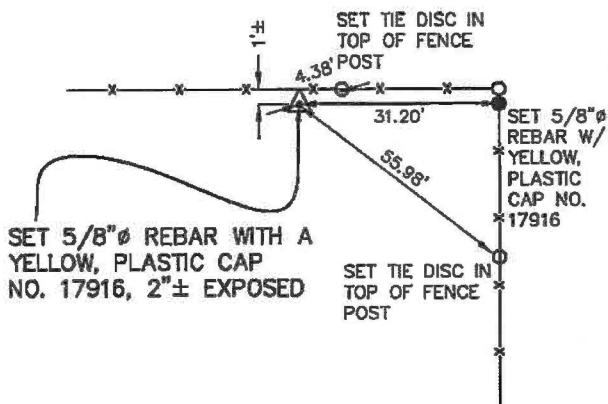
FOR LAND SURVEY MONUMENTS SITUATED IN SECTION 11, TOWNSHIP 86 NORTH, RANGE 4 WEST, OF THE FIFTH PRINCIPAL MERIDIAN, JONES COUNTY, IOWA

REASON FOR PREPARING CERTIFICATE:

- A) THERE IS NO CERTIFICATE FOR THE CORNER ON FILE WITH THE RECORDER OF THE COUNTY IN WHICH THE CORNER IS LOCATED.
- B) THE CORNER POSITION DIFFERS FROM THAT SHOWN IN THE PUBLIC RECORDS.
- C) THE CORNER MONUMENT WAS REPLACED OR MODIFIED.
- D) THE REFERENCE TIES REFERRED TO IN AN EXISTING PUBLIC RECORD WERE MISSING OR ARE NOT CORRECT.

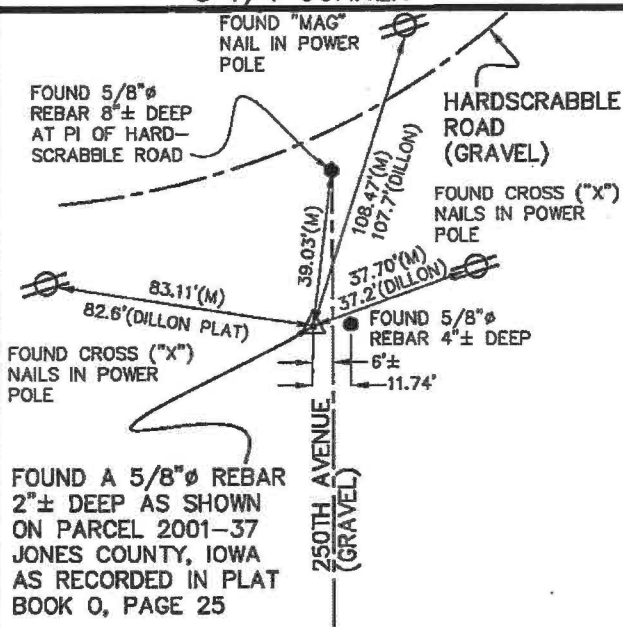
RECOVERY TIE DRAWING

CENTER OF SECTION



NOT TO SCALE

S 1/4 CORNER

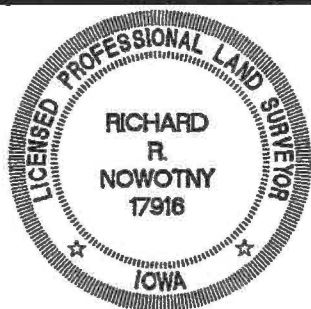


MONUMENT DESCRIPTION AND REMARKS :
 ESTABLISHED THE NORTH SOUTH SECTION LINE FROM THE SOUTH 1/4 CORNER TO THE NORTHWEST CORNER OF THE SW 1/4 NE 1/4 AS SHOWN ON THE PLAT OF SURVEY, PARCEL 2015-51, JONES COUNTY, IOWA AS RECORDED AS INSTRUMENT #: 2015-2192 IN THE RECORDS OF THE JONES COUNTY RECORDER'S OFFICE. THE STRAIGHT LINE FROM THE E 1/4 CORNER TO THE W 1/4 CORNER WAS EXPLORED AS SHOWN ON THE SECTION BREAKDOWN SHOWN ON THE PLAT OF SURVEY, PARCELS 2009-103, 2009-104 AND 2009-105 AS RECORDED IN FEEBOOK 2009 3937 IN SAID RECORDER'S OFFICE, BUT THIS DEVIATED FROM A LONG STANDING EAST-WEST FENCE LINE, SO BEARING BREAK BETWEEN THE E 1/4 CORNER AND W 1/4 CORNER WAS ESTABLISHED AT THE CENTER OF SECTION, USING A BEST FIT OF FENCE LINE LOCATIONS ALONG THE EAST-WEST SECTION LINE AND INTERSECTED IT WITH THE NORTH-SOUTH SECTION LINE AS DESCRIBED ABOVE. A 5/8"Ø REBAR WITH A YELLOW, PLASTIC CAP NO. 17916 WAS SET, EXPOSED 2"± AND TIED OUT AS SHOWN ABOVE.

MONUMENT DESCRIPTION AND REMARKS :
 FOUND A 5/8"Ø REBAR, 2"± DEEP APPROXIMATELY 6 FEET WEST OF THE TRAVELED CENTERLINE OF 250TH AVENUE AT THE S 1/4 CORNER OF SEC. 11-T86N-R4W OF THE 5TH P.M., JONES COUNTY, IOWA AS SHOWN ON THE PLAT OF SURVEY, PARCEL 2001-37, JONES COUNTY, IOWA AS RECORDED IN PLAT BOOK O, PAGE 25 IN THE RECORDS OF THE JONES COUNTY RECORDER'S OFFICE. IT APPEARS THAT THE PIN 11.74 FEET TO THE EAST WAS USED ON THE PLAT OF SURVEY, PARCEL 2001-19, JONES COUNTY, IOWA AS RECORDED IN PLAT BOOK O, PAGE 33 IN SAID RECORDER'S OFFICE. DILLON'S CORNER TIES TO THE S 1/4 CORNER WERE SHOWN ON THE PLAT OF SURVEY, PARCEL 2001-37 AND A RECORDED CORNER CERTIFICATE WAS NOT FOUND.

I hereby certify that this land surveying document was prepared and the related survey work was performed by me or under my direct personal supervision and that I am a duly licensed Professional Land Surveyor under the laws of the State of Iowa.

Richard R. Nowotny 9-18 20 23
 RICHARD R. NOWOTNY
 P.L.S. Iowa Lic. No. 17916
 My license renewal date is December 31, 20 23



Drawn by:	Scale:
MAS	NOT TO SCALE
Checked by:	Date:
RRN	8/11/2023
Field Book:	Project No:
1374	8369-003

U.S. PUBLIC LAND SURVEY CORNER CERTIFICATE
 SEC. 11-T86N-R4W OF THE 5TH P.M.,
 JONES COUNTY, IOWA
 (LARRY LEE ROLLER PROJECT)

MMS CONSULTANTS, INC.
 IOWA CITY, IOWA 52240
 (319) 351-8282
 www.mmsconsultants.net



Date	Revision