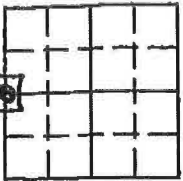


Instrument #: 2025-3174  
12/15/2025 09:54:21 AM Total Pages: 1  
ZSC SECTION CORNER CERTIFICATE  
Recording Fee: \$7.00 Transfer Tax: \$0  
Sheri L. Jones, Recorder, Jones County Iowa



Prepared by: Richard M. Kordick, P.E.L.S., 689 185th Street, Tipton, Iowa 52772 Phone: 563-432-64234

# U.S. PUBLIC LAND SURVEY CORNER CERTIFICATE



S 1/4 corner

Section 10

Township 86 N

Range 4 W

Distances:

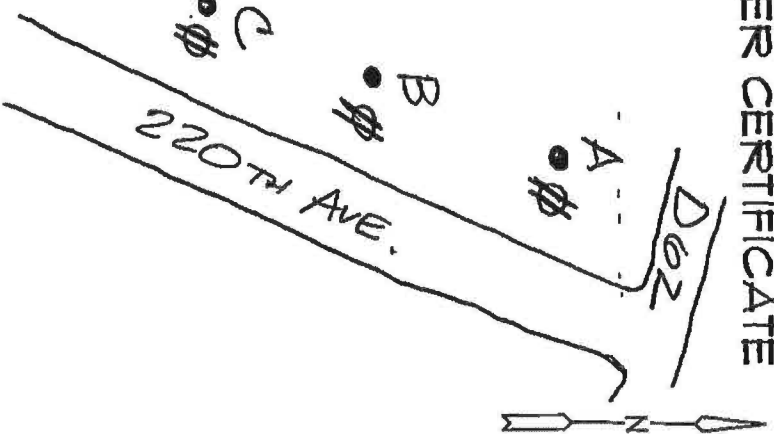
A = 752.27'

B = 607.64'

C = 503.34'

Plan-View No Scale

NOTE: ALL TIES  
ARE 1/2" REBAR, 4" HIGH,  
SET ON WEST  
SIDE OF POWER POLE



Reason for corner tie: (Indicated with check boxes)  
☐ A) There is no certificate for the corner on file with the recorder.  
☐ B) Corner position differs from previously recorded certificate recorded in book, page  
☐ C) Corner monument was replaced or modified.  
☒ D) Reference ties in previously recorded certificate recorded in 2005-0256 are incorrect or missing.

Field search performed as follows: (Indicated with check boxes)  
☒ Field search was performed with a metal detector, ☐ probing, and ☒ excavation.  
☐ Nothing was found.

County Engineer's Office Old Corner Ties called for a \_\_\_\_\_ of this corner.  
Plat in ~~RECORDED~~ Office BK ~~Q~~ - Page ~~203~~ called for a FOUND 1/2" REBAR  
at this corner.  
Plat in ~~RECORDED~~ Office BK ~~Q~~ - Page ~~208~~ called for a FOUND 1/2" REBAR  
at this corner.  
Plat in ~~RECORDED~~ Office BK ~~Q~~ - Page ~~242~~ called for a FOUND 1/2" REBAR  
at this corner.  
Plat in \_\_\_\_\_ Office BK \_\_\_\_\_ - Page \_\_\_\_\_ called for a \_\_\_\_\_  
at this corner.

A 1/2 REBAR WITH RED CAP "JOHNSON", 1/4" DEEP,  
WAS FOUND AND USED AS CORNER.



I hereby certify that this land surveying document was prepared and the related survey work was performed by me or under my direct personal supervision and that I am a duly licensed Professional Land Surveyor under the laws of the State of Iowa.

*Richard M. Kordick* 12/9/2025  
Richard M. Kordick  
License number 13657  
My license renewal date is December 31, 2025.  
Pages or sheets covered by this seal: 1 of 1

LEGEND:  
☒ Section Corner as noted  
☒ Power Pole  
● 1/2" rebar set 4" high, the  
⊗ Set Nag nail in top of post, the  
--- Section line  
--- Centerline  
--- Existing Fence  
--- Recorded Dist.

Kordick Surveying  
& Engineering  
689 185th Street  
Tipton, Iowa 52772  
563-432-6424

U.S. Public Land  
Survey Corner Certificate  
JONES County

Field BK	25049
Date	12-4-25
Job No.	25049
Sheet	1 of 1

2005 0856  
FILED  
RECORDERS OFFICE  
JONES COUNTY IOWA

05 JAN 21 AM 10:00

MARIE KRUTZFIELD  
RECORDER 7.00 pd

PREPARED BY HALL & HALL ENGINEERS, INC. 209 29TH STREET N.E. CEDAR RAPIDS, IOWA 52402 (319) 362-9548

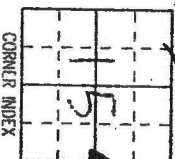
LAND SURVEY MONUMENTS SITUATED IN SECTION 15, TOWNSHIP 84 NORTH,  
RANGE 4 WEST, OF THE FIFTH PRINCIPAL MERIDIAN, JONES COUNTY IOWA.

RECOVERY TIE DRAWING

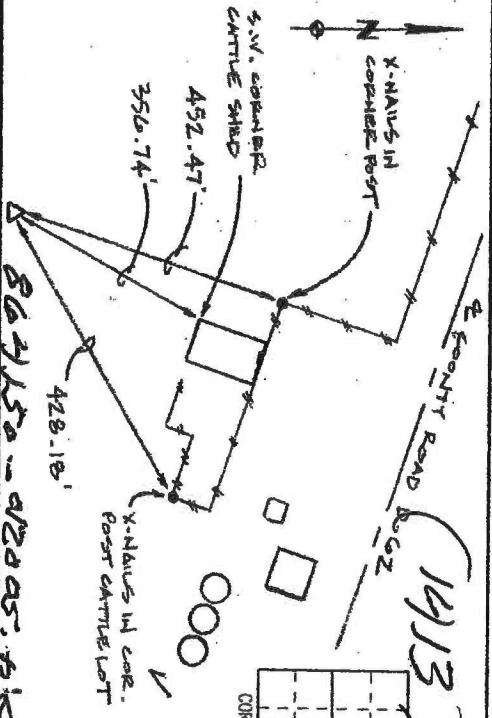
MONUMENT DESCRIPTION AND REMARKS:

E 1/4 COR. --1/4 --1/4, SEC. 15, T84N, R14W

REASON FOR PREPARING CERTIFICATE: (A) B, C OR D  
PREVIOUS BOOK \_\_\_\_\_ PAGE \_\_\_\_\_  
SET 1/2" REBAR WITH RED L.S. CAP # 11954



CORNER INDEX

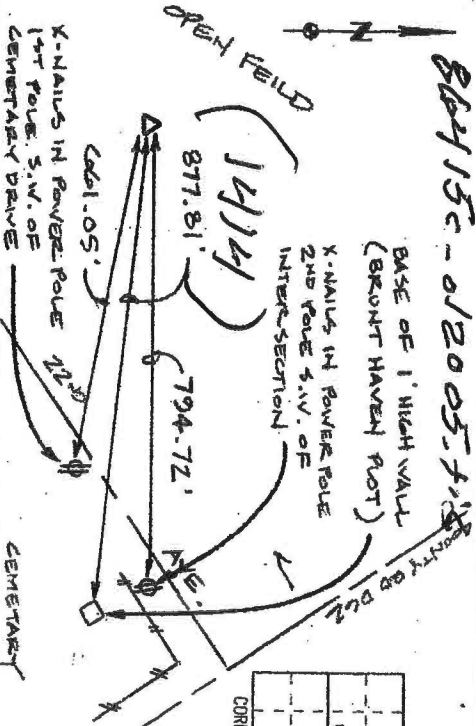


N 1/4 COR. --1/4 --1/4, SEC. 15, T84N, R14W

REASON FOR PREPARING CERTIFICATE: (A) B, C OR D  
PREVIOUS BOOK \_\_\_\_\_ PAGE \_\_\_\_\_  
SET 1/2" REBAR WITH RED L.S. CAP # 11954 18" DEEP IN OPEN FIELD

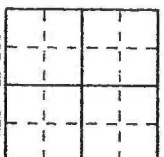


CORNER INDEX



-- COR. --1/4 --1/4, SEC. --, T--N, R--W

REASON FOR PREPARING CERTIFICATE: A, B, C OR D  
PREVIOUS BOOK \_\_\_\_\_ PAGE \_\_\_\_\_



CORNER INDEX

REASON FOR PREPARING CERTIFICATE:

- A) THERE IS NO CERTIFICATE FOR THE CORNER ON FILE WITH THE RECORDER OF THE COUNTY IN WHICH THE CORNER IS LOCATED.  
B) CORNER POSITION DIFFERS FROM THAT SHOWN IN THE PUBLIC RECORDS OF THE COUNTY IN WHICH THE CORNER IS LOCATED.  
C) THE CORNER MONUMENT HAS BEEN REPLACED OR MODIFIED.  
D) THE REFERENCE TIES REFERRED TO IN AN EXISTING PUBLIC RECORD ARE INCORRECT OR MISSING.



I hereby certify that this land surveying document was prepared and the related survey work was performed by me or under my direct personal supervision and that I am a duly licensed Land Surveyor under the laws of the State of Iowa.

Signed:

Date:

Daniel J. Johnson, L.S. #11954  
My license renewal expires December 31, 2006

Pages or sheets covered by this seal: 1

Sheet  
Title: U.S. PUBLIC LAND SURVEY CORNER CERTIFICATE

Project  
Title: JONES COUNTY ROAD D62

Drawn by: DJJ Checked by: DJJ Approved by: DJJ Field Book No: \_\_\_\_\_



HALL AND HALL ENGINEERS, INC.  
209 29TH STREET N.E.  
CEDAR RAPIDS, IOWA 52402  
(319) 362-9548

Scale: NONE Date: 5/6/94

Project No: 4972

2003 1049  
FILED  
RECORDERS OFFICE  
JONES COUNTY IOWA

03 MAR 13 PM 12:48

MARIE KRUTZFIELD  
RECORDER 6009d

PREPARED BY HALL & HALL ENGINEERS, INC. 209 29TH STREET N.E. CEDAR RAPIDS, IOWA 52402 (319) 362-9548

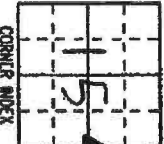
LAND SURVEY MONUMENTS SITUATED IN SECTION 15, TOWNSHIP 8c NORTH,  
RANGE 4 WEST, OF THE FIFTH PRINCIPAL MERIDIAN, JONES COUNTY IOWA.

RECOVERY THE DRAWING

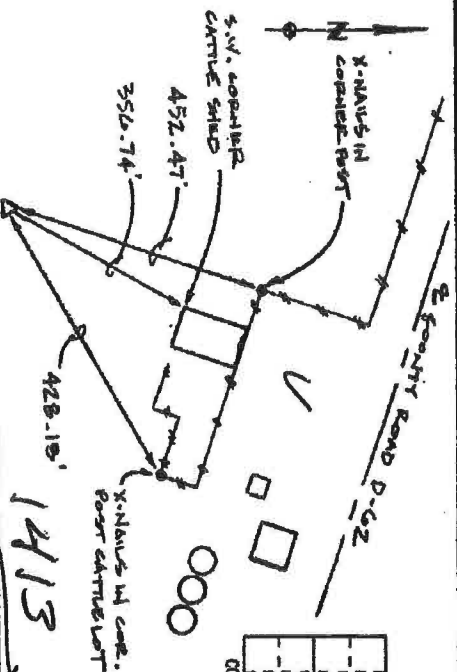
MONUMENT DESCRIPTION AND REMARKS:

E 1/4 COR. -- 1/4 -- 1/4, SEC. 15, T8cN, R4W

REASON FOR PREPARING CERTIFICATE: D, B, C OR D  
PREVIOUS BOOK PAGE  
SET 1/2" REBAR WITH RED L.S.  
CAP # 11954

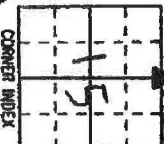


864150-022703

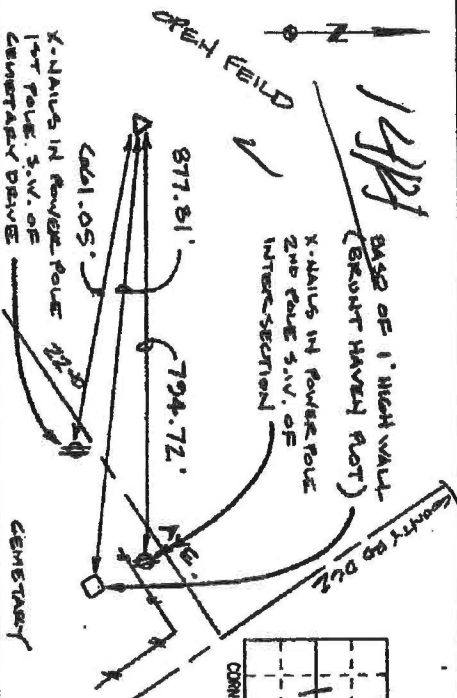


N 1/4 COR. -- 1/4 -- 1/4, SEC. 15, T8cN, R4W

REASON FOR PREPARING CERTIFICATE: A, B, C OR D  
PREVIOUS BOOK PAGE  
SET 1/2" REBAR WITH RED L.S. CAP  
# 11954 18" DEEP IN OPEN FIELD

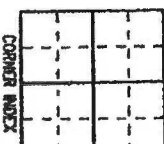


864150-022703



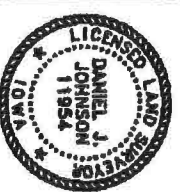
-- COR. -- 1/4 -- 1/4, SEC. -- 1 -- T -- N, R -- W

REASON FOR PREPARING CERTIFICATE: A, B, C OR D  
PREVIOUS BOOK PAGE



REASON FOR PREPARING CERTIFICATE:

- A) THERE IS NO CERTIFICATE FOR THE CORNER ON FILE WITH THE RECORDER OF THE COUNTY IN WHICH THE CORNER IS LOCATED.  
B) CORNER POSITION DIFFERS FROM THAT SHOWN IN THE PUBLIC RECORDS OF THE COUNTY IN WHICH THE CORNER IS LOCATED.  
C) THE CORNER MONUMENT HAS BEEN REPLACED OR MODIFIED.  
D) THE REFERENCE TIES REFERRED TO IN AN EXISTING PUBLIC RECORD ARE INCORRECT OR MISSING.



I hereby certify that this land surveying document was prepared and the related survey work was performed by me or under my direct personal supervision and that I am a duly licensed Land Surveyor under the laws of the State of Iowa.  
Signed: Daniel J. Johnson Date: 2-27-03  
Daniel J. Johnson, 11954  
My license registration date is December 31, 2004  
Pages or sheets covered by this seal: 1

U.S. PUBLIC LAND SURVEY CORNER CERTIFICATE

Sheet Title:

Project Title: JONES COUNTY ROAD D-62

Drawn by: DLE

Checked by: DJJ

Approved by: DJJ

Field Book No:

Scale:

NONE

Date:

5/6/94

Project No:

4972



HALL AND HALL ENGINEERS, INC.  
209 29TH STREET N.E.  
CEDAR RAPIDS, IOWA 52402  
(319) 362-9548