

COPY

FEE BOOK: 2009 0839 3/9/2009 11:56 AM
REC FEES: No Fee
PAGES: 1 Marie Krutzfield, Recorder
Jones County, Iowa

PREPARED BY
CLARENCE J. WALTON, JONES COUNTY ENGINEER'S OFFICE, 19501 HWY. 64, ANAMOSA, IOWA, 52205 (319) 462-3785

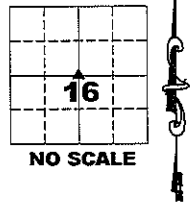
UNITED STATES PUBLIC LAND SURVEY CORNER CERTIFICATE

LAND SURVEY MONUMENTS SITUATED IN SECTION 16, TOWNSHIP 86 NORTH,
RANGE 4 WEST OF THE 5TH PRINCIPAL MERIDIAN, JONES COUNTY, IOWA.

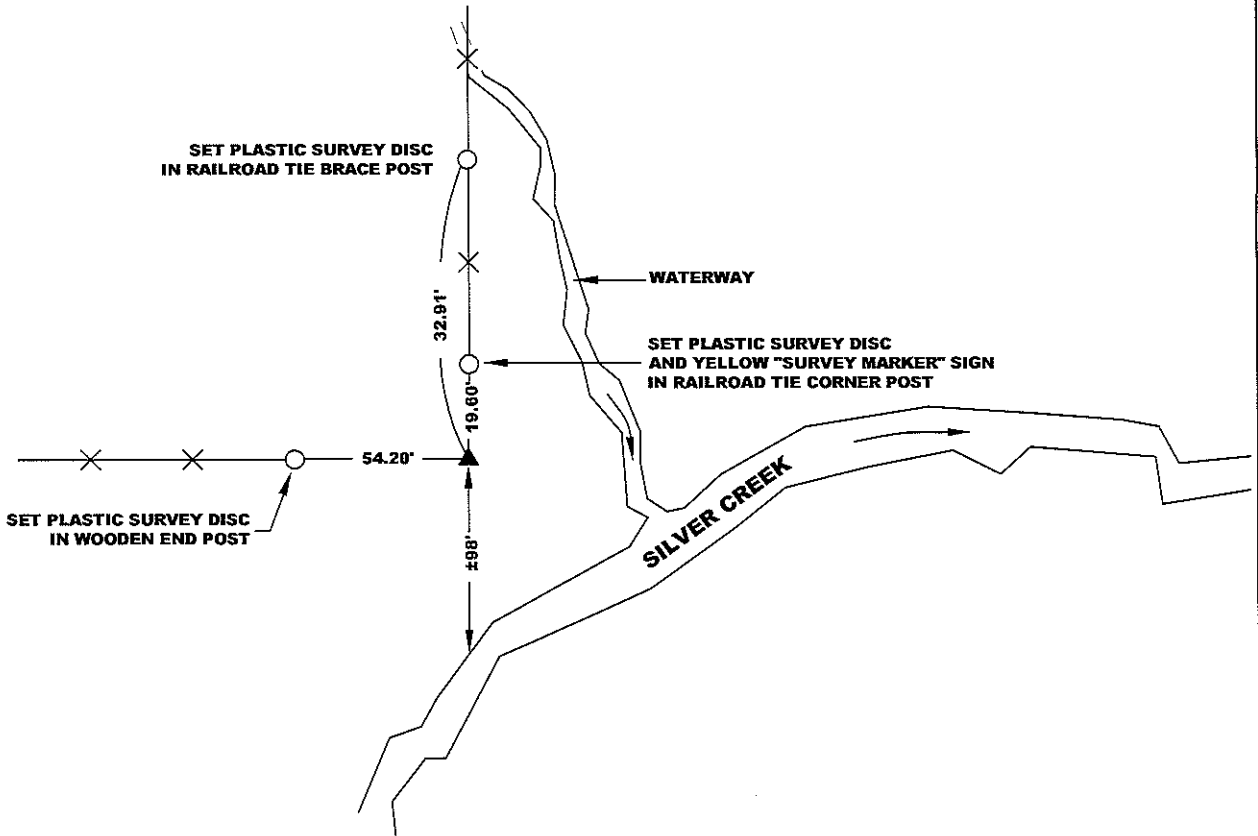
OFFICE FILE NO.

STATE PLANE COORDINATE
NAD 83 IOWA NORTH
N 3565461.80
E 5512418.31

CORNER SECTION TOWNSHIP RANGE
CENTER 16 T86N R4W



NOTE:
THE STATE PLANE COORDINATE AS INDICATED IS FOR CONVENIENCE ONLY.
THE TIES AS SHOWN SHOULD BE USED TO REPLACE THE CORNER, IF
DESTROYED

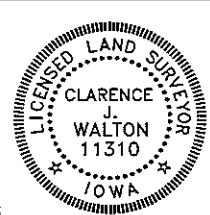


OPC ORANGE PLASTIC CAP
() RECORDED AS

PREVIOUSLY RECORDED IN RECORDER'S DOCUMENT N/A

MONUMENT DESCRIPTION AND HOW ESTABLISHED FOUND $\pm 8" \times \pm 12"$ LIMESTONE LYING ON SIDE 6" BELOW SURFACE. SET $5/8"$ REBAR WITH ORANGE PLASTIC CAP #11310 ON NORTH SIDE OF STONE FOR DETECTION PURPOSE ONLY. ALSO SET PERMANENT MAGNET ON SOUTH SIDE OF STONE. STONE IS VERY CLOSE TO THE INTERSECTION OF THE QUARTER SECTION LINES.

FIELD BOOK 377, PAGE 146. DATE OF SURVEY: 3/05/09



I hereby certify that this land surveying document and the related survey work was performed by me or under my direct personal supervision and that I am a duly registered Land Surveyor under the laws of the State of Iowa.

Signed: *Clarence J. Walton* 3/9/09
Clarence J. Walton, L.S.
My Registration Renewal Date is December 31, 2009
Iowa License Number 11310
Pages or sheets covered by this seal: 1 of 1.

- A. THERE IS NO CERTIFICATE FOR THE CORNER ON FILE WITH THE RECORDER OF THE COUNTY IN WHICH THE CORNER IS LOCATED.
- B. THE CORNER MONUMENT HAS BEEN REPLACED OR MODIFIED.
- C. THE SURVEYOR IN RESPONSIBLE CHARGE OF THE LAND SURVEYING ACCEPTS A CORNER POSITION THAT DIFFERS FROM THAT SHOWN IN THE PUBLIC RECORDS OF THE COUNTY IN WHICH THE CORNER IS LOCATED.
- D. THE REFERENCE TIES REFERRED TO IN AN EXISTING PUBLIC RECORD NO LONGER EXIST.

CORNERS TO BE INDEXED			
CORNER	SECTION	TOWNSHIP	RANGE
CENTER	16	86N	4W

JONES COUNTY ENGINEER'S OFFICE

19501 HWY. 64, ANAMOSA, IOWA 52205
(319) 462-3785