

COPY

FEE BOOK: 2009 0685 2/27/2009 10:48 AM
 REC FEES: No Fee
 PAGES: 1 Marie Krutzfield, Recorder
 Jones County, Iowa

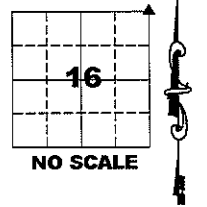
PREPARED BY
 CLARENCE J. WALTON, JONES COUNTY ENGINEER'S OFFICE, 19501 HWY. 64, ANAMOSA, IOWA, 52205 (319) 462-3785

UNITED STATES PUBLIC LAND
 SURVEY CORNER CERTIFICATE
 LAND SURVEY MONUMENTS SITUATED IN SECTION 16, TOWNSHIP 86 NORTH,
 RANGE 4 WEST OF THE 5TH PRINCIPAL MERIDIAN, JONES COUNTY, IOWA.

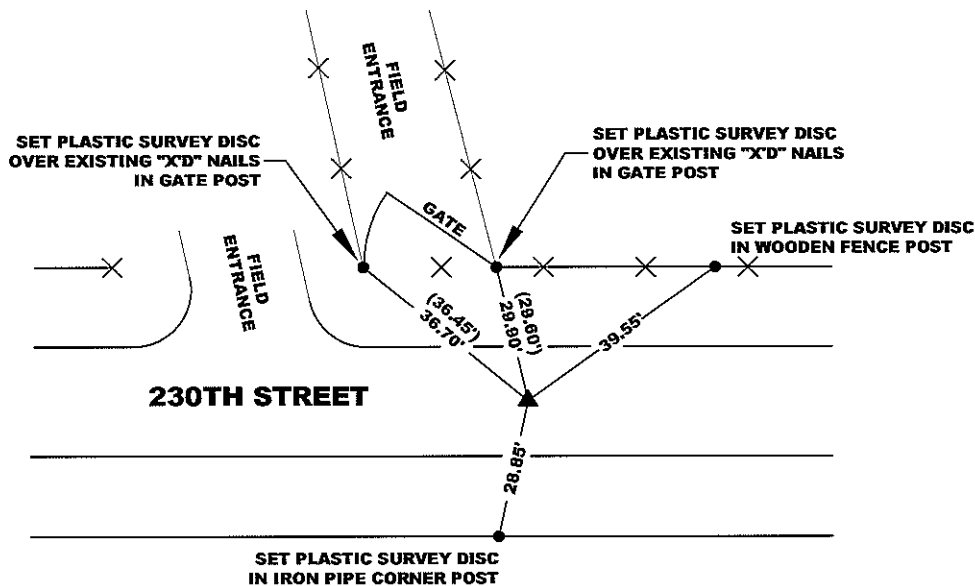
OFFICE FILE NO.

STATE PLANE COORDINATE
 NAD 83 IOWA NORTH
 N 3568144.31
 E 5515025.83

CORNER SECTION TOWNSHIP RANGE
 NE CORNER 16 T86N R4W



NOTE:
 THE STATE PLANE COORDINATE AS INDICATED IS FOR CONVENIENCE ONLY.
 THE TIES AS SHOWN SHOULD BE USED TO REPLACE THE CORNER, IF
 DESTROYED

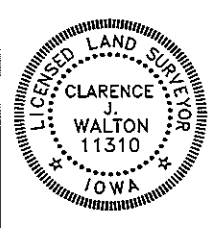


OPC ORANGE PLASTIC CAP
 () RECORDED AS

PREVIOUSLY RECORDED IN RECORDER'S DOCUMENT BOOK 322, PAGE 173

MONUMENT DESCRIPTION AND HOW ESTABLISHED 5/8" REBAR 18" BELOW ROAD SURFACE. PER RECOLLECTION OF SURVEY PARTY CHIEF REBAR WAS SET CA. 1974. SET 5/8"X15" REBAR WITH ORANGE PLASTIC CAP #11310 DIRECTLY ON TOP OF FOUND REBAR.

FIELD BOOK 377, PAGE 156 . DATE OF SURVEY: 2/17/09



I hereby certify that this land surveying document and the related survey work was performed by me or under my direct personal supervision and that I am a duly registered Land Surveyor under the laws of the State of Iowa.
 Signed: *Clarence J. Walton* 2/27/09
 Clarence J. Walton, L.S.
 My Registration Renewal Date is December 31, 2009
 Iowa License Number 11310
 Pages or sheets covered by this seal: 1 of 1.

- A. THERE IS NO CERTIFICATE FOR THE CORNER ON FILE WITH THE RECORDER OF THE COUNTY IN WHICH THE CORNER IS LOCATED.
- B. THE CORNER MONUMENT HAS BEEN REPLACED OR MODIFIED.
- C. THE SURVEYOR IN RESPONSIBLE CHARGE OF THE LAND SURVEYING ACCEPTS A CORNER POSITION THAT DIFFERS FROM THAT SHOWN IN THE PUBLIC RECORDS OF THE COUNTY IN WHICH THE CORNER IS LOCATED.
- D. THE REFERENCE TIES REFERRED TO IN AN EXISTING PUBLIC RECORD NO LONGER EXIST.

CORNERS TO BE INDEXED

CORNER	SECTION	TOWNSHIP	RANGE
NE	16	86N	4W
SW	10	86N	4W
NW	15	86N	4W
SE	9	86N	4W

JONES COUNTY ENGINEER'S OFFICE



19501 HWY. 64, ANAMOSA, IOWA 52205
 (319) 462-3785

UNITED STATES PUBLIC LAND SURVEY CORNER CERTIFICATE

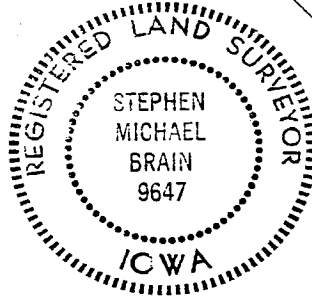
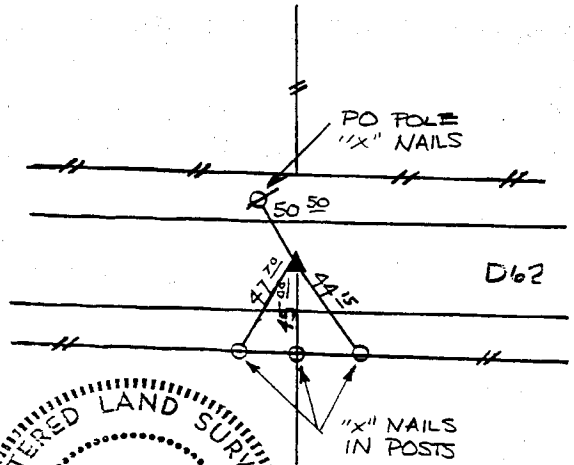
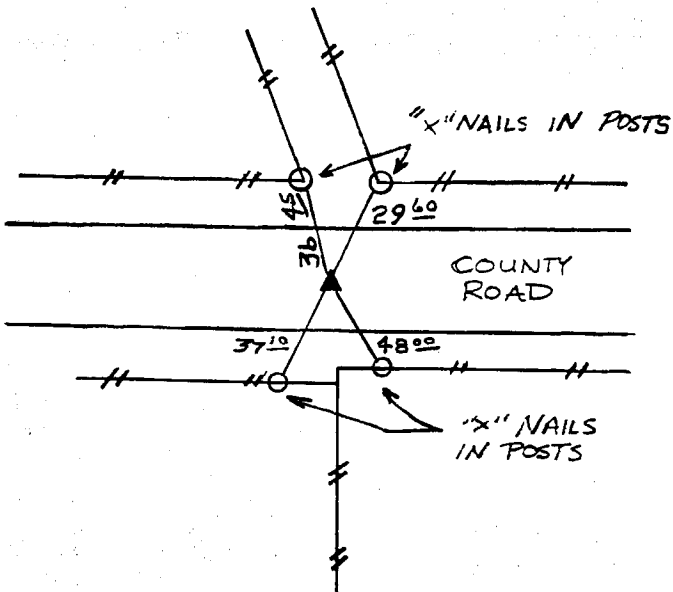
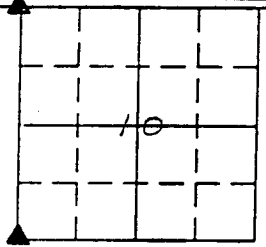
LAND SURVEY MONUMENTS SITUATED IN SECTION 10, TOWNSHIP 86,
RANGE 4W, OF THE 5th. PRINCIPAL MERIDIAN, JONES
COUNTY, IOWA.

N NO SCALE

RECOVERY TIE DRAWING

SW CORNER

NW CORNER



ON CARD NE COR SEC. 16 M.S.

ON CARD NE. SEC 9 M.S.

PREVIOUSLY RECORDED IN BOOK 121 PAGE 39

PREVIOUSLY RECORDED IN BOOK 121 PAGE 39

MONUMENT DESCRIPTION AND HOW ESTABLISHED:
FOUND SPIKE 2" BELOW SURFACE

MONUMENT DESCRIPTION AND HOW ESTABLISHED:
FOUND P.K. SPIKE 3" BELOW SURFACE

I HEREBY DECLARE THAT THE SURVEY WORK WAS COMPLETED AND THIS CERTIFICATE WAS PREPARED BY ME OR UNDER MY DIRECT PERSONAL SUPERVISION AND THAT I AM A DULY REGISTERED LAND SURVEYOR UNDER THE LAWS OF THE STATE OF IOWA.

Stephen Michael Brain 1-10-93
STEPHEN MICHAEL BRAIN, P.E. & L.S. 9647

List Corners to be Indexed			
Corners	Section	Twp	Range
SW	10	86	4W
NW	10	86	4W