

Marie Krutzfield, Recorder
Jones County, Iowa

PREPARED BY

CLARENCE J. WALTON, JONES COUNTY ENGINEER'S OFFICE, 19501 HWY. 64, ANAMOSA, IOWA, 52205 (319) 462-3785

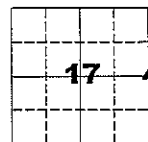
UNITED STATES PUBLIC LAND SURVEY CORNER CERTIFICATE

**LAND SURVEY MONUMENTS SITUATED IN SECTION 17, TOWNSHIP 86 NORTH,
RANGE 4 WEST OF THE 5TH PRINCIPAL MERIDIAN, JONES COUNTY, IOWA.**

OFFICE FILE NO.

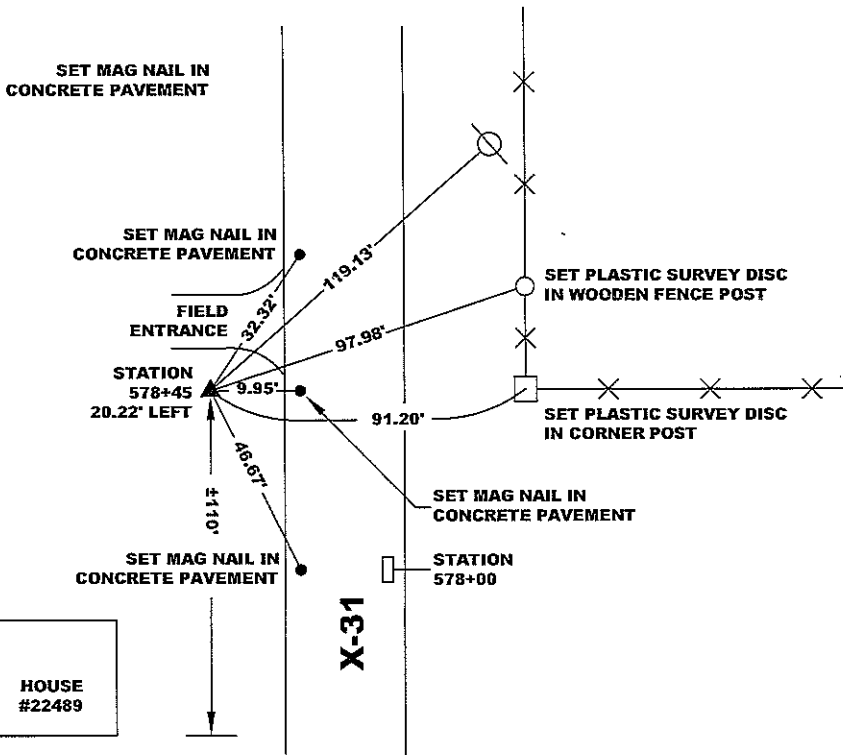
STATE PLANE COORDINATE
NAD 83 IOWA NORTH
N 3565435.39
E 5509749.04

CORNER SECTION TOWNSHIP RANGE
E 1/4 CORNER 17 T86N R4W



NO SCALE

NOTE:
THE STATE PLANE COORDINATE AS INDICATED IS FOR CONVENIENCE ONLY.
THE TIES AS SHOWN SHOULD BE USED TO REPLACE THE CORNER, IF
DESTROYED

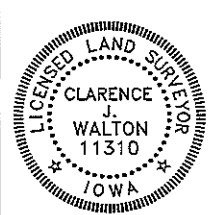


OPC ORANGE PLASTIC CAP
() RECORDED AS

PREVIOUSLY RECORDED IN RECORDER'S DOCUMENT N/A

MONUMENT DESCRIPTION AND HOW ESTABLISHED FOUND 4"X4" CONCRETE MONUMENT W/BRONZE DISC PER TIES IN JONES COUNTY ENGINEER'S OFFICE RECORDS. MONUMENT 15" BELOW SURFACE IN WEST SHOULDER LINE OF JONES COUNTY ROAD X-31. SET TWO 5/8" REBAR ON NORTH AND SOUTH SIDES OF MONUMENT FOR DETECTION PURPOSES.

FIELD BOOK 377, PAGE 159. DATE OF SURVEY: 11/17/08



I hereby certify that this land surveying document and the related survey work was performed by me or under my direct personal supervision and that I am a duly registered Land Surveyor under the laws of the State of Iowa.
Signed: *Clarence J. Walton* 12/3/2008
Clarence J. Walton, L.S.
My Registration Renewal Date is December 31, 2009
Iowa License Number 11310
Pages or sheets covered by this seal: 1 of 1.

- A. THERE IS NO CERTIFICATE FOR THE CORNER ON FILE WITH THE RECORDER OF THE COUNTY IN WHICH THE CORNER IS LOCATED.
- B. THE CORNER MONUMENT HAS BEEN REPLACED OR MODIFIED.
- C. THE SURVEYOR IN RESPONSIBLE CHARGE OF THE LAND SURVEYING ACCEPTS A CORNER POSITION THAT DIFFERS FROM THAT SHOWN IN THE PUBLIC RECORDS OF THE COUNTY IN WHICH THE CORNER IS LOCATED.
- D. THE REFERENCE TIES REFERRED TO IN AN EXISTING PUBLIC RECORD NO LONGER EXIST.

CORNERS TO BE INDEXED

CORNER	SECTION	TOWNSHIP	RANGE
E 1/4	17	86N	4W
W 1/4	16	86N	4W

JONES COUNTY ENGINEER'S OFFICE



19501 HWY. 64, ANAMOSA, IOWA 52205
(319) 462-3785

THIS IS NOT A CERTIFICATION

E

JONES COUNTY ENGINEER'S OFFICE, 19501 HWY. 64, ANAMOSA, IOWA, 52205 (319)462-3785

UNITED STATES PUBLIC LAND SURVEY CORNER CERTIFICATE

LAND SURVEY MONUMENTS SITUATED IN SECTION 17, TOWNSHIP 86
NORTH, RANGE 4 WEST OF THE 5TH P.M., JONES COUNTY, IOWA

CORNERS TO BE INDEXED

CORNER E-QUARTER	SECTION 17	TOWNSHIP 86N	RANGE 4W
OFFICE FILE NO. _____			
864170_082504.TIF			

FD. 4"X4"X48" CONC. MONUMENT 8" BELOW ROAD SURFACE E1/4-17-86-4

1459

864170_012405.tif X 131 COUNTY ROAD (SLOPE MEASURE)

REF:
JONES COUNTY SURVEY CREW.
POSTEL-POWELL-KNIGHT-STOLL
JULY-29-1974
FIELD BOOK 247, PAGE 75

PREVIOUSLY RECORDED IN BOOK _____, PAGE _____ FOUND
MONUMENT DESCRIPTION AND HOW ESTABLISHED _____

4"X4"X48" CONCRETE MONUMENT 8" BELOW ROAD SURFACE. SET
REFERENCE POINTS AND TIED OUT AS INDICATED. EAST QUARTER
CORNER SECTION 17, TOWNSHIP 86 NORTH, RANGE 4 WEST OF THE
5TH PRINCIPAL MERIDIAN, JONES COUNTY, IOWA.

CORNERS TO BE INDEXED

CORNER	SECTION	TOWNSHIP	RANGE
OFFICE FILE NO. _____			

PREVIOUSLY RECORDED IN BOOK _____, PAGE _____
MONUMENT DESCRIPTION AND HOW ESTABLISHED _____

CORNERS TO BE INDEXED

CORNER	SECTION	TOWNSHIP	RANGE
OFFICE FILE NO. _____			

PREVIOUSLY RECORDED IN BOOK _____, PAGE _____
MONUMENT DESCRIPTION AND HOW ESTABLISHED _____

CORNERS TO BE INDEXED

CORNER	SECTION	TOWNSHIP	RANGE
OFFICE FILE NO. _____			

PREVIOUSLY RECORDED IN BOOK _____, PAGE _____
MONUMENT DESCRIPTION AND HOW ESTABLISHED _____

~~I hereby declare that this plat, survey or report was made by me or under my direct personal supervision and that I am a duly registered Land Surveyor under the laws of the State of Iowa.~~

Signed: _____

SEAL

JONES COUNTY
ENGINEER'S OFFICE

19501 HWY. 64,
ANAMOSA, IOWA,
52205 (319)462-3785