

COPY

FEE BOOK: 2009 0841 3/9/2009 12:00 PM  
 REC FEES: No Fee  
 PAGES: 1

Marie Krutzfield, Recorder  
 Jones County, Iowa

PREPARED BY

CLARENCE J. WALTON, JONES COUNTY ENGINEER'S OFFICE, 19501 HWY. 64, ANAMOSA, IOWA, 52205 (319) 462-3785

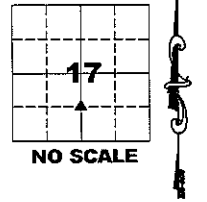
# UNITED STATES PUBLIC LAND SURVEY CORNER CERTIFICATE

LAND SURVEY MONUMENTS SITUATED IN SECTION 17, TOWNSHIP 86 NORTH,  
 RANGE 4 WEST OF THE 5TH PRINCIPAL MERIDIAN, JONES COUNTY, IOWA.

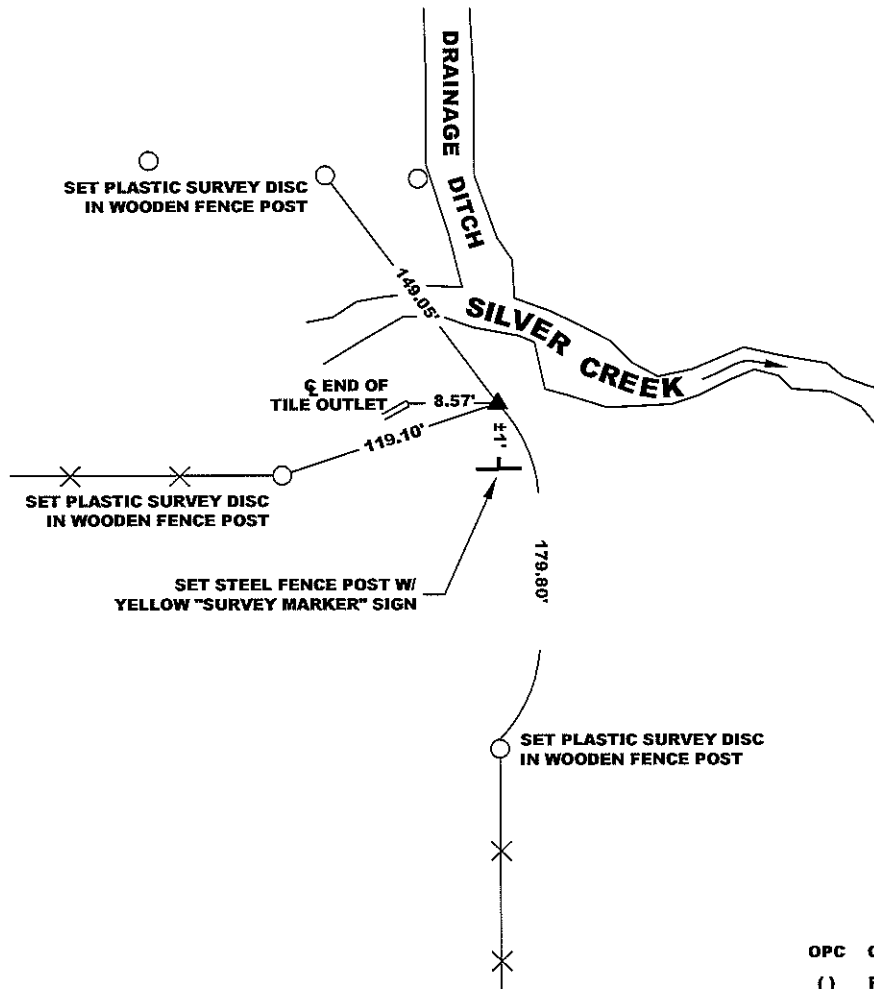
**OFFICE FILE NO.**

STATE PLANE COORDINATE  
 NAD 83 IOWA NORTH  
 N 3564066.96  
 E 5507091.00

CORNER SECTION TOWNSHIP RANGE  
 NE CORNER 17 T86N R4W  
 SE 1/4 SW 1/4



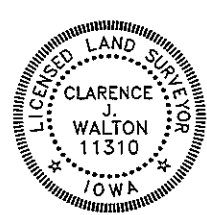
NOTE:  
 THE STATE PLANE COORDINATE AS INDICATED IS FOR CONVENIENCE ONLY.  
 THE TIES AS SHOWN SHOULD BE USED TO REPLACE THE CORNER, IF  
 DESTROYED



OPC ORANGE PLASTIC CAP  
 ( ) RECORDED AS

PREVIOUSLY RECORDED IN RECORDER'S DOCUMENT N/A  
 MONUMENT DESCRIPTION AND HOW ESTABLISHED PROBED FOR STONE BUT FOUND NOTHING. THE PROXIMITY OF SILVER CREEK WOULD MAKE  
ONE BELIEVE THAT THE STONE HAD BEEN WASHED OUT BE THE CREEK. SET 5/8" REBAR WITH ORANGE PLASTIC CAP #11310 ON LINE BETWEEN AND  
EQUIDISTANT FROM THE CENTER OF SECTION 17-T86N-R4W AND THE S 1/4 CORNER OF SAID SECTION 17.

FIELD BOOK 377, PAGE 150. DATE OF SURVEY: 3/03/09



I hereby certify that this land surveying document and the related survey work was performed by me or under my direct personal supervision and that I am a duly registered Land Surveyor under the laws of the State of Iowa.

Signed: *Clarence J. Walton* 3/9/09  
 Clarence J. Walton, L.S.  
 My Registration Renewal Date is December 31, 2009  
 Iowa License Number 11310  
 Pages or sheets covered by this seal: 1 of 1.

- A. THERE IS NO CERTIFICATE FOR THE CORNER ON FILE WITH THE RECORDER OF THE COUNTY IN WHICH THE CORNER IS LOCATED.
- B. THE CORNER MONUMENT HAS BEEN REPLACED OR MODIFIED.
- C. THE SURVEYOR IN RESPONSIBLE CHARGE OF THE LAND SURVEYING ACCEPTS A CORNER POSITION THAT DIFFERS FROM THAT SHOWN IN THE PUBLIC RECORDS OF THE COUNTY IN WHICH THE CORNER IS LOCATED.
- D. THE REFERENCE TIES REFERRED TO IN AN EXISTING PUBLIC RECORD NO LONGER EXIST.

**CORNERS TO BE INDEXED**

CORNER	SECTION	TOWNSHIP	RANGE
NE CORNER	17	86N	4W
SE 1/4 SW 1/4	17	86N	4W
SE CORNER	17	86N	4W
NE 1/4 SW 1/4	17	86N	4W
SW CORNER	17	86N	4W
NW 1/4 SE 1/4	17	86N	4W
NW CORNER	17	86N	4W
SW 1/4 SE 1/4	17	86N	4W

**JONES COUNTY ENGINEER'S OFFICE**



19501 HWY. 64, ANAMOSA, IOWA 52205  
 (319) 462-3785