

SECTION CORNER CERTIFICATE

OF
 LAND SURVEY MONUMENTS SITUATED IN SECTION B, TOWNSHIP B6 NORTH,
 RANGE 4 WEST, OF THE FIFTH PRINCIPAL MERIDIAN, JONES, COUNTY, IOWA.

PREVIOUSLY RECORDED IN BOOK _____ AT PAGE _____

FOR RECORDER'S USE

REASON FOR PREPARING CERTIFICATE:

- A) THERE IS NO CERTIFICATE FOR THE CORNER ON FILE WITH THE RECORDER OF THE COUNTY IN WHICH THE CORNER IS LOCATED.
- B) CORNER POSITION DIFFERS FROM THAT SHOWN IN THE PUBLIC RECORDS OF THE COUNTY IN WHICH THE CORNER IS LOCATED.
- C) THE CORNER MONUMENT HAS BEEN REPLACED OR MODIFIED.
- D) THE REFERENCE TIES REFERRED TO IN AN EXISTING PUBLIC RECORD ARE INCORRECT.

1999 3184
 FILED
 RECORDERS OFFICE
 JONES COUNTY IOWA
 99 SEP -8 AM 10: 16
 MARIE KRUTZFELD
 RECORDER

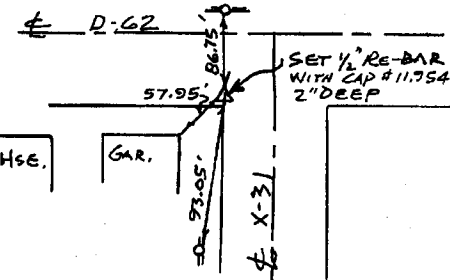
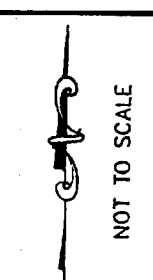
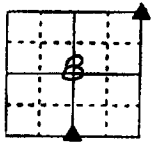
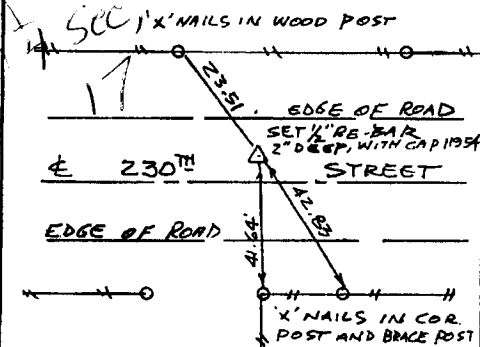
MONUMENT DESCRIPTION AND REMARKS:

S/4 COR: SET 1/2" RE-BAR, 2" DEEP, WITH CAP #11,954, NORTH EDGE OF ROAD
 N.E. COR:

RECOVERY TIE DRAWING

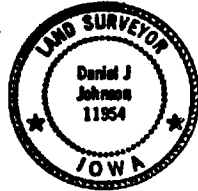
S/4 COR. B-86-4

NE COR. B-86-4 ✓



I, DANIEL J. JOHNSON, CERTIFY THAT THE CORNER LOCATION(S) SHOWN ON THIS RECORD WERE DETERMINED BY ME OR UNDER MY DIRECTION AND CONTROL AND THAT THIS U.S. PUBLIC LAND SURVEY MONUMENT RECORD IS CORRECT AND COMPLETE TO THE BEST OF MY KNOWLEDGE AND BELIEF.

Daniel J. Johnson 9-8-99
 DANIEL J. JOHNSON L.S. NO 11954 DATE



PROPERTY DWWS	U.S. PUBLIC LAND SURVEY RECORD PROJECT JONES COUNTY ENGINEER	HALL AND HALL ENGINEERS, INC. 209 28TH STREET N.E. CEDAR RAPIDS, IOWA 52402 (319) 362-9348
GOVERNMENT CORNER 5/8" IRON SET CENTERLINE EXISTING FENCE LINE R.O.W. LINE	SHEET TITLE PROJECT DATE SCALE COUNTY PLAT	SHEET NO. PLAT NO. COUNTY DATE
	DATE: 1-16-96 SCALE: NONE COUNTY: Jones	SHEET NO.: 5473

86408e-090899
 86417c-090899