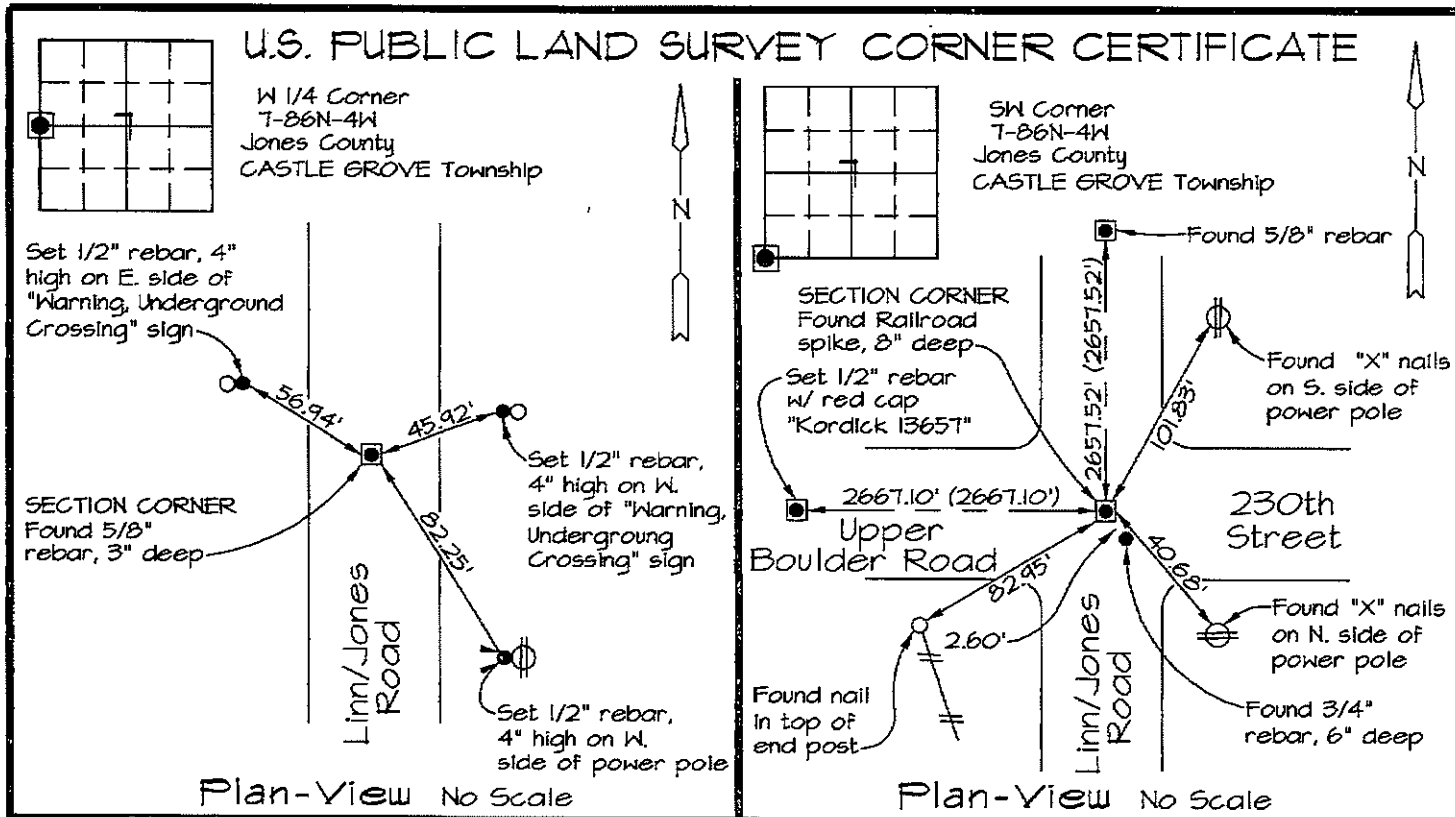


Marie Krutzfield, Recorder  
 Jones County, Iowa

Prepared by: Richard M. Kordick, P.E., L.S., 120 East Main, Suite D, Anamosa, IA 52205 Phone: (319) 462-4498



Reason for corner tie:

- A) There is no certificate for the corner on file with the recorder.
- B) Corner position differs from previously recorded certificate recorded in book , page
- C) Corner monument was replaced or modified.
- D) Reference ties in previously recorded certificate recorded in book , page are incorrect or missing.

Research at the recorder's office, auditor's office, and engineer's office revealed the following:  
 An Easement Exhibit recorded in Linn County Recorder's Office Bk. 3182-481, Bk. 3204-175, and Bk. 3182-485 called for a "Found Iron Pin, Sta. 31+43.72, CL 0.0'" at this corner. A Jones County Engineer's Office corner tie called for a "5/8"x24" rebar" at this corner.

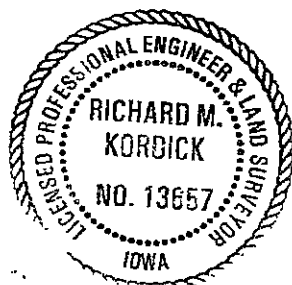
An Easement Exhibit recorded in Linn County Recorder's Office Bk. 3182-482 and Bk. 3234-404 and 405 called for a "Found Iron Pin, Sta. 4+86.21, CL 0.0'" at this corner.

Field search performed was as follows:  
 Field search was performed with a metal detector and excavation.

Field search performed was as follows:  
 Field search was performed with a metal detector and excavation.

Monument found or set:  
 A 5/8" rebar was found and used as the corner.

Monument found or set:  
 A railroad spike was found and used as the corner.



I hereby certify that this land surveying document was prepared and the related survey work was performed by me or under my direct personal supervision and that I am a duly licensed Land Surveyor under the laws of the State of Iowa.

*Richard M. Kordick* 2/8/2008  
 Richard M. Kordick date  
 License number 13657  
 My license renewal date is December 31, 2009.  
 Pages or sheets covered by this seal: 1 of 1

LEGEND:

- Section Corner as noted
- Power Pole
- Section line
- Centerline
- /// Existing Fence
- ( ) Recorded Dist.

**Kordick Surveying & Engineering**  
 120 East Main, Suite D  
 Anamosa, Iowa 52205  
 (319) 462-4498

U.S. Public Land  
 Survey Corner Certificate

Project:  
 Section T-T. 86 N.-R. 4 W.

Field BK  
 07103B  
 Date  
 2-8-08  
 Job No.  
 07103B  
 Sheet  
 1 of 1

THIS IS NOT A CERTIFICATION

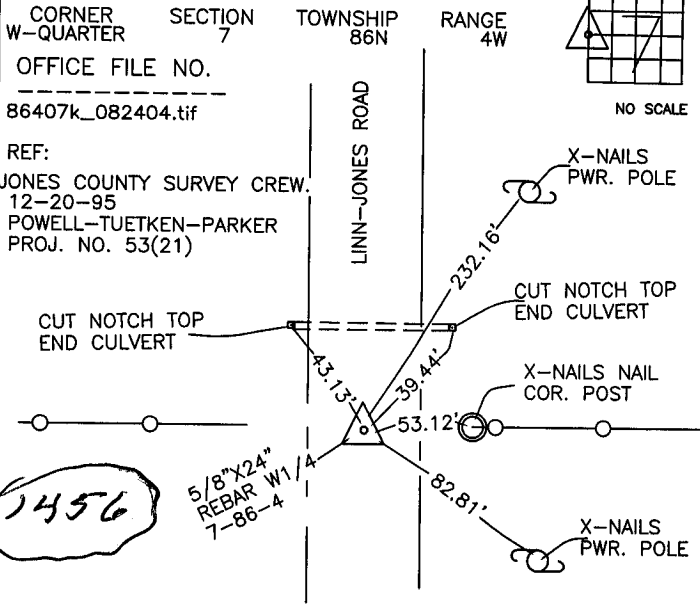
B

JONES COUNTY ENGINEER'S OFFICE, 19501 HWY. 64, ANAMOSA, IOWA, 52205 (319)462-3785

# UNITED STATES PUBLIC LAND SURVEY CORNER CERTIFICATE

LAND SURVEY MONUMENTS SITUATED IN SECTION 7, TOWNSHIP 86 NORTH, RANGE 4 WEST OF THE 5TH P.M., JONES COUNTY, IOWA

### CORNERS TO BE INDEXED



PREVIOUSLY RECORDED IN BOOK \_\_\_\_\_, PAGE \_\_\_\_\_  
MONUMENT DESCRIPTION AND HOW ESTABLISHED FOUND  
5/8" X 24" REBAR. SET REFERENCE POINTS AND TIED AS INDICATED. WEST QUARTER SECTION 7, TOWNSHIP 86 NORTH, RANGE 4 WEST OF THE 5TH PRINCIPAL MERIDIAN, JONES COUNTY, IOWA.

86407k\_012405.tif

### CORNERS TO BE INDEXED

CORNER	SECTION	TOWNSHIP	RANGE

OFFICE FILE NO. \_\_\_\_\_

PREVIOUSLY RECORDED IN BOOK \_\_\_\_\_, PAGE \_\_\_\_\_  
MONUMENT DESCRIPTION AND HOW ESTABLISHED \_\_\_\_\_

### CORNERS TO BE INDEXED

CORNER	SECTION	TOWNSHIP	RANGE

OFFICE FILE NO. \_\_\_\_\_

PREVIOUSLY RECORDED IN BOOK \_\_\_\_\_, PAGE \_\_\_\_\_  
MONUMENT DESCRIPTION AND HOW ESTABLISHED \_\_\_\_\_

### CORNERS TO BE INDEXED

CORNER	SECTION	TOWNSHIP	RANGE

OFFICE FILE NO. \_\_\_\_\_

PREVIOUSLY RECORDED IN BOOK \_\_\_\_\_, PAGE \_\_\_\_\_  
MONUMENT DESCRIPTION AND HOW ESTABLISHED \_\_\_\_\_

I hereby declare that this plat, survey or report was made by me or under my direct personal supervision and that I am a duly registered Land Surveyor under the laws of the State of Iowa.

Signed: \_\_\_\_\_

SEAL

JONES COUNTY ENGINEER'S OFFICE

19501 HWY. 64,  
ANAMOSA, IOWA,  
52205 (319)462-3785