

# SECTION CORNER CERTIFICATE

OF  
 LAND SURVEY MONUMENTS SITUATED IN SECTION 7, TOWNSHIP 86 NORTH,  
 RANGE 4 WEST, OF THE FIFTH PRINCIPAL MERIDIAN, JONES, COUNTY, IOWA.

PREVIOUSLY RECORDED IN BOOK \_\_\_\_\_ AT PAGE \_\_\_\_\_

FOR RECORDER'S USE

**REASON FOR PREPARING CERTIFICATE:**

- A) THERE IS NO CERTIFICATE FOR THE CORNER ON FILE WITH THE RECORDER OF THE COUNTY IN WHICH THE CORNER IS LOCATED.
- B) CORNER POSITION DIFFERS FROM THAT SHOWN IN THE PUBLIC RECORDS OF THE COUNTY IN WHICH THE CORNER IS LOCATED.
- C) THE CORNER MONUMENT HAS BEEN REPLACED OR MODIFIED.
- D) THE REFERENCE TIES REFERRED TO IN AN EXISTING PUBLIC RECORD ARE INCORRECT.

**19993185**  
 FILED  
 RECORDERS OFFICE  
 JONES COUNTY IOWA

99 SEP -8 AM 10:17

MARIE KRUTZFIELD  
 RECORDER

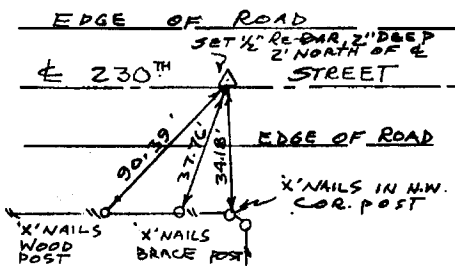
**MONUMENT DESCRIPTION AND REMARKS:**

S/4 COR. SET 1/2" RE-BAR, 2" DEEP WITH CAP #11954, 2' NORTH OF E. OF 230<sup>TH</sup> STREET

## RECOVERY TIE DRAWING

S/4 COR. 7-86-4

N/4 sec. 18



86418c-090899

I, DANIEL J. JOHNSON, CERTIFY THAT THE CORNER LOCATION(S) SHOWN ON THIS RECORD WERE DETERMINED BY ME OR UNDER MY DIRECTION AND CONTROL AND THAT THIS U.S. PUBLIC LAND SURVEY MONUMENT RECORD IS CORRECT AND COMPLETE TO THE BEST OF MY KNOWLEDGE AND BELIEF.

*Daniel J. Johnson* 9-8-99  
 DANIEL J. JOHNSON L.S. NO 11954 DATE



<p><b>SYMBOL:</b></p> <ul style="list-style-type: none"> <li>△ GOVERNMENT CORNER</li> <li>○ 1/8" IRON PIN SET</li> <li>— CENTERLINE</li> <li>- - - EXISTING FENCE LINE</li> <li>- - - R.O.W. LINE</li> </ul>	<p><b>SHEET TITLE:</b> U.S. PUBLIC LAND SURVEY RECORD</p> <p><b>PROJECT TITLE:</b> JONES COUNTY ENGINEER</p>	<p><b>HALL AND HALL ENGINEERS, INC.</b></p> <p>209 20TH STREET N.E.                  CEDAR RAPIDS, IOWA 52402                  (319) 362-8548</p>
<p>DWS</p>	<p>1-16-96</p>	<p>SCALE: NONE</p>
<p>NO. 5473</p>	<p>COUNTY</p>	<p>NO. 5473</p>